

## Product datasheet for **TA323107S**

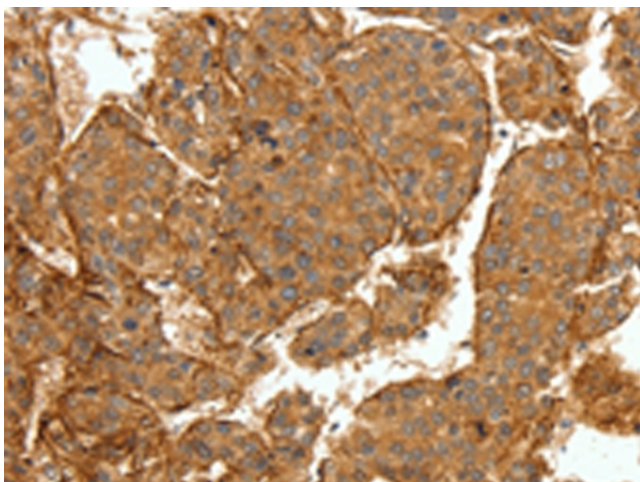
### Collagen IV (COL4A1) Rabbit Polyclonal Antibody

#### Product data:

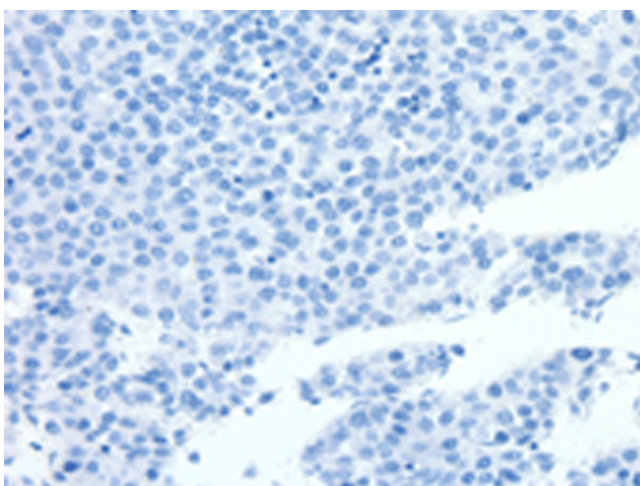
Product Type:	Primary Antibodies
Applications:	IHC
Recommended Dilution:	IHC: 50-200 Positive control: Human lung cancer Predicted cell location: Cytoplasm, Basement membrane, ExtraCellular space, ExtraCellular matrix
Reactivity:	Human, Mouse
Host:	Rabbit
Isotype:	IgG
Clonality:	Polyclonal
Immunogen:	Synthetic peptide corresponding to a region derived from 1648-1662 amino acids of human collagen, type IV, alpha 1
Formulation:	PBS pH7.3, 0.05% NaN <sub>3</sub> , 50% glycerol
Purification:	Antigen affinity purification
Conjugation:	Unconjugated
Storage:	Store at -20°C as received.
Stability:	Stable for 12 months from date of receipt.
Gene Name:	collagen type IV alpha 1 chain
Database Link:	<a href="#">NP_001836</a> <a href="#">Entrez Gene 12826 Mouse</a> <a href="#">Entrez Gene 1282 Human</a> <a href="#">P02462</a>
Background:	This gene encodes the major type IV alpha collagen chain of basement membranes. Like the other members of the type IV collagen gene family; this gene is organized in a head-to-head conformation with another type IV collagen gene so that each gene pair shares a common promoter.
Synonyms:	BSVD
Protein Pathways:	ECM-receptor interaction, Focal adhesion, Pathways in cancer, Small cell lung cancer



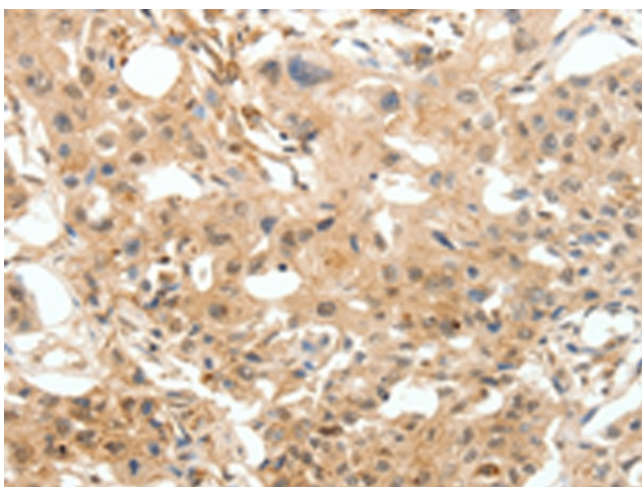
[View online »](#)

**Product images:**

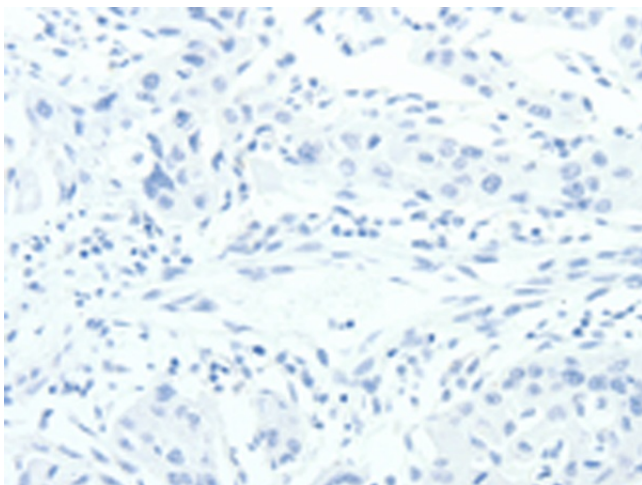
Immunohistochemistry of paraffin-embedded Human lung cancer tissue using [TA323107] (COL4A1 Antibody) at dilution 1/30 (Original magnification:  $\times 200$ )



Immunohistochemistry of paraffin-embedded Human lung cancer tissue using [TA323107] (COL4A1 Antibody) at dilution 1/30, treated with synthetic peptide. (Original magnification:  $\times 200$ )



Immunohistochemistry of paraffin-embedded Human breast cancer tissue using [TA323107] (COL4A1 Antibody) at dilution 1/30 (Original magnification:  $\times 200$ )



Immunohistochemistry of paraffin-embedded Human breast cancer tissue using [TA323107] (COL4A1 Antibody) at dilution 1/30, treated with synthetic peptide. (Original magnification:  $\times 200$ )