

Product datasheet for **TA323106S**

Collagen II (COL2A1) Rabbit Polyclonal Antibody

Product data:

Product Type:	Primary Antibodies
Applications:	IHC, WB
Recommended Dilution:	WB: 500-2000 WB positive control: Rat skeletal muscle tissue lysate IHC: 50-200 Positive control: Human liver cancer Predicted cell location: Secreted
Reactivity:	Human, Mouse, Rat
Host:	Rabbit
Isotype:	IgG
Clonality:	Polyclonal
Immunogen:	Full length fusion protein
Formulation:	PBS pH7.3, 0.05% NaN ₃ , 50% glycerol
Purification:	Antigen affinity purification
Conjugation:	Unconjugated
Storage:	Store at -20°C as received.
Stability:	Stable for 12 months from date of receipt.
Predicted Protein Size:	30 kDa
Gene Name:	collagen type II alpha 1 chain
Database Link:	NP_001835 Entrez Gene 12824 Mouse Entrez Gene 25412 Rat Entrez Gene 1280 Human P02458



[View online »](#)

Background:

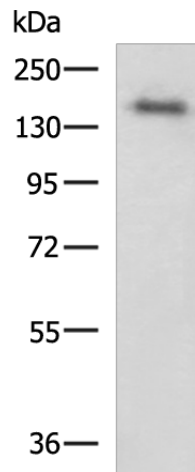
This gene encodes the alpha-1 chain of type II collagen; a fibrillar collagen found in cartilage and the vitreous humor of the eye. Mutations in this gene are associated with achondrogenesis; chondrodysplasia; early onset familial osteoarthritis; SED congenita; Langer-Saldino achondrogenesis; Kniest dysplasia; Stickler syndrome type I; and spondyloepimetaphyseal dysplasia Strudwick type. In addition; defects in processing chondrocalcin; a calcium binding protein that is the C-propeptide of this collagen molecule; are also associated with chondrodysplasia. There are two transcripts identified for this gene.

Synonyms:

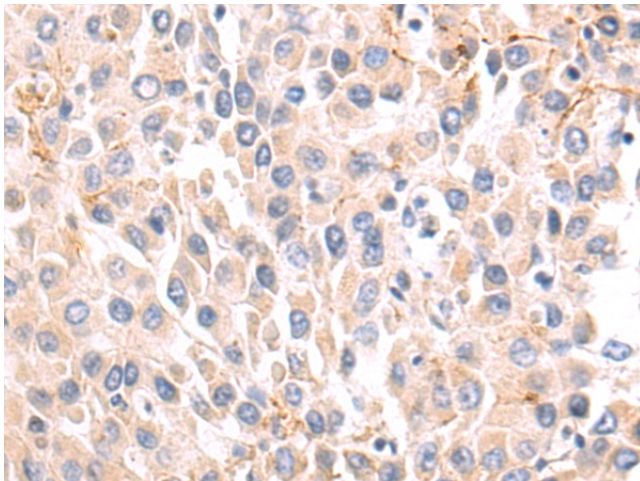
ANFH; AOM; COL11A3; SEDC; STL1

Protein Pathways:

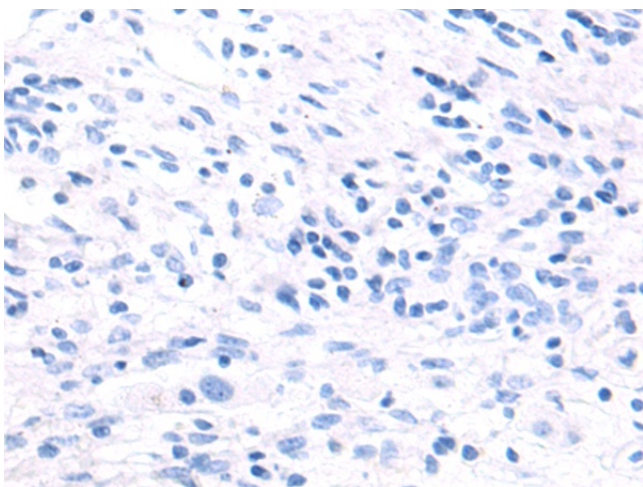
ECM-receptor interaction, Focal adhesion

Product images:

Gel: 6%SDS-PAGE
Lysate: 40 µg
Lane: Rat skeletal muscle tissue lysate
Primary antibody: [TA323106] (COL2A1 Antibody) at dilution 1/550
Secondary antibody: Goat anti rabbit IgG at 1/5000 dilution
Exposure time: 5 seconds



Immunohistochemistry of paraffin-embedded Human liver cancer tissue using [TA323106] (COL2A1 Antibody) at dilution 1/70 (Original magnification: ×200)



Immunohistochemistry of paraffin-embedded Human liver cancer tissue using [TA323106] (COL2A1 Antibody) at dilution 1/70, treated with fusion protein. (Original magnification: ×200)