

## Product datasheet for **TA323105S**

### COX7B Rabbit Polyclonal Antibody

#### Product data:

|                         |   |
|-------------------------|---|
| Product Type:           | Primary Antibodies  |
| Applications:           | IHC, WB   |
| Recommended Dilution:   | WB: 500-2000<br>WB positive control: 293T cells<br>IHC: 100-300<br>Positive control: Human colon cancer<br>Predicted cell location: Cytoplasm |
| Reactivity:             | Human, Rat  |
| Host:                   | Rabbit  |
| Isotype:                | IgG   |
| Clonality:              | Polyclonal  |
| Immunogen:              | Fusion protein corresponding to a region derived from 1-79 amino acids of human cytochrome c oxidase subunit VIIb                             |
| Formulation:            | PBS pH7.3, 0.05% NaN <sub>3</sub> , 50% glycerol  |
| Purification:           | Antigen affinity purification   |
| Conjugation:            | Unconjugated  |
| Storage:                | Store at -20°C as received.   |
| Stability:              | Stable for 12 months from date of receipt.  |
| Predicted Protein Size: | 9 kDa   |
| Gene Name:              | cytochrome c oxidase subunit 7B   |
| Database Link:          | <a href="#">NP_001857</a><br><a href="#">Entrez Gene 303393 Rat</a> <a href="#">Entrez Gene 1349 Human</a><br><a href="#">P24311</a>          |



[View online »](#)

**Background:**

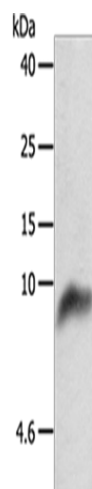
Cytochrome c oxidase (COX); the terminal component of the mitochondrial respiratory chain; catalyzes the electron transfer from reduced cytochrome c to oxygen. This component is a heteromeric complex consisting of 3 catalytic subunits encoded by mitochondrial genes and multiple structural subunits encoded by nuclear genes. The mitochondrially-encoded subunits function in electron transfer; and the nuclear-encoded subunits may function in the regulation and assembly of the complex. This nuclear gene encodes subunit VIIIb; which is highly similar to bovine COX VIIIb protein and is found in all tissues. This gene may have several pseudogenes on chromosomes 1; 2; 20 and 22.

**Synonyms:**

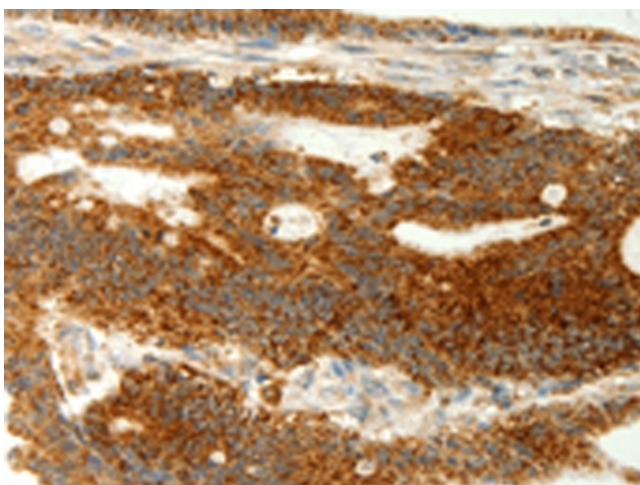
APLCC; LSDMCA2

**Protein Pathways:**

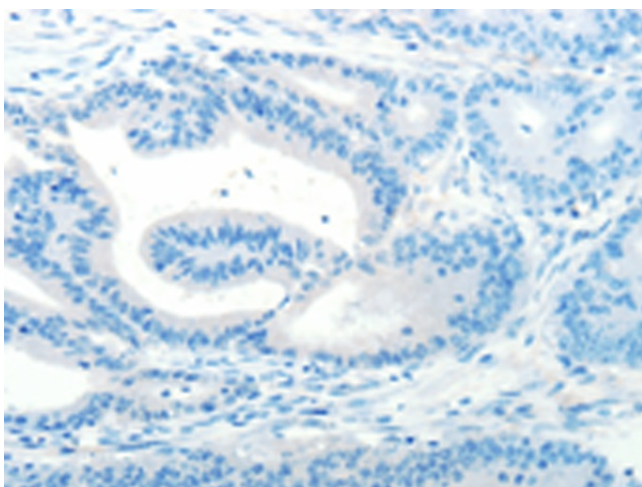
Alzheimer's disease, Cardiac muscle contraction, Huntington's disease, Metabolic pathways, Oxidative phosphorylation, Parkinson's disease

**Product images:**

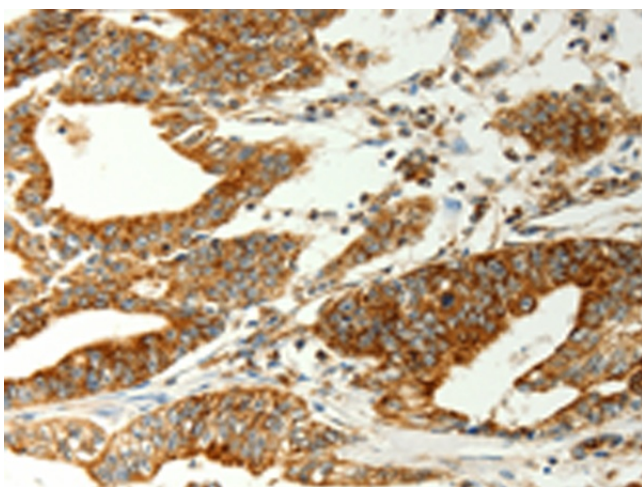
Gel: 10+15%SDS-PAGE  
Lysate: 50 µg  
Lane: 293T cells  
Primary antibody: [TA323105] (COX7B Antibody) at dilution 1/800  
Secondary antibody: Goat anti rabbit IgG at 1/8000 dilution  
Exposure time: 40 seconds



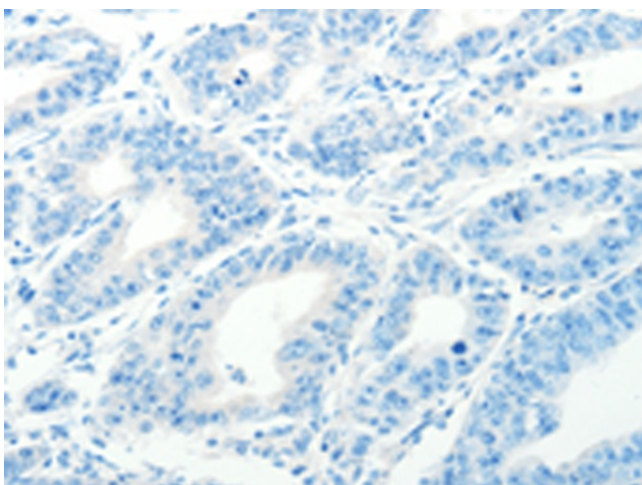
Immunohistochemistry of paraffin-embedded Human colon cancer tissue using [TA323105] (COX7B Antibody) at dilution 1/70 (Original magnification: ×200)



Immunohistochemistry of paraffin-embedded Human colon cancer tissue using [TA323105] (COX7B Antibody) at dilution 1/70, treated with fusion protein. (Original magnification:  $\times 200$ )



Immunohistochemistry of paraffin-embedded Human gastric cancer tissue using [TA323105] (COX7B Antibody) at dilution 1/70 (Original magnification:  $\times 200$ )



Immunohistochemistry of paraffin-embedded Human gastric cancer tissue using [TA323105] (COX7B Antibody) at dilution 1/70, treated with fusion protein. (Original magnification:  $\times 200$ )