

Product datasheet for **TA323103S**

Cytochrome C Oxidase subunit VIb (COX6B1) Rabbit Polyclonal Antibody

Product data:

Product Type:	Primary Antibodies
Applications:	IHC, WB
Recommended Dilution:	WB: 500-2000 WB positive control: LOVO and HepG2 cell lysates IHC: 50-200 Positive control: Human prostate cancer Predicted cell location: Cytoplasm
Reactivity:	Human, Mouse
Host:	Rabbit
Isotype:	IgG
Clonality:	Polyclonal
Immunogen:	Full length fusion protein
Formulation:	PBS pH7.3, 0.05% NaN ₃ , 50% glycerol
Purification:	Antigen affinity purification
Conjugation:	Unconjugated
Storage:	Store at -20°C as received.
Stability:	Stable for 12 months from date of receipt.
Gene Name:	cytochrome c oxidase subunit 6B1
Database Link:	NP_001854 Entrez Gene 110323 Mouse Entrez Gene 1340 Human P14854



[View online »](#)

Background:

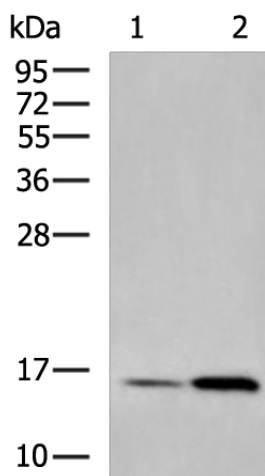
Cytochrome c oxidase (COX); the terminal enzyme of the mitochondrial respiratory chain; catalyzes the electron transfer from reduced cytochrome c to oxygen. It is a heteromeric complex consisting of 3 catalytic subunits encoded by mitochondrial genes and multiple structural subunits encoded by nuclear genes. The mitochondrially-encoded subunits function in electron transfer; and the nuclear-encoded subunits may be involved in the regulation and assembly of the complex. This nuclear gene encodes subunit VIb. Mutations in this gene are associated with severe infantile encephalomyopathy. Three pseudogenes COX6BP-1; COX6BP-2 and COX6BP-3 have been found on chromosomes 7; 17 and 22q13.1-13.2; respectively.

Synonyms:

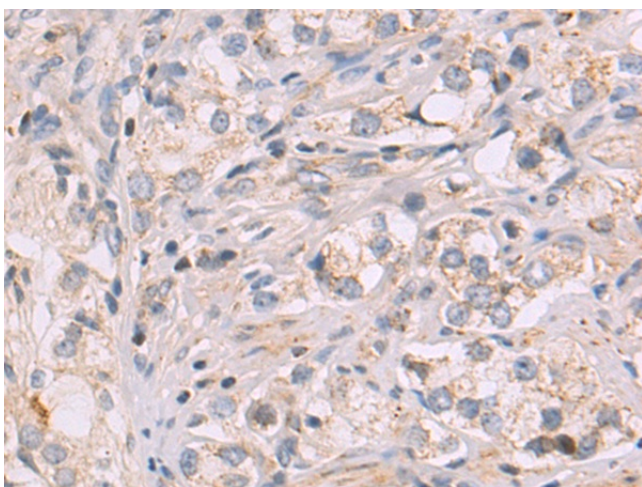
COX6B; COXG; COXVIb1

Protein Pathways:

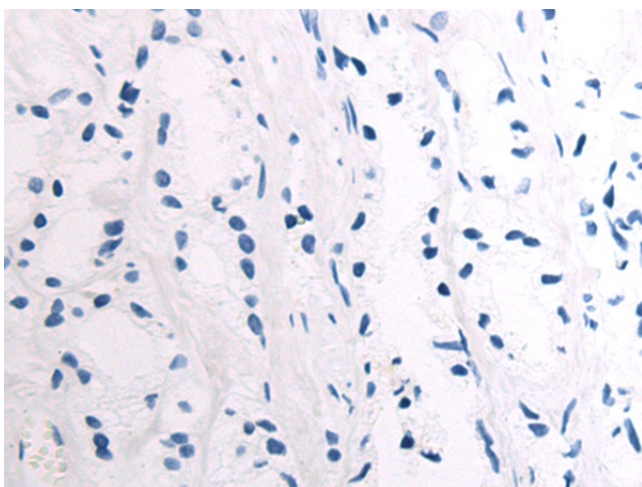
Alzheimer's disease, Cardiac muscle contraction, Huntington's disease, Metabolic pathways, Oxidative phosphorylation, Parkinson's disease

Product images:

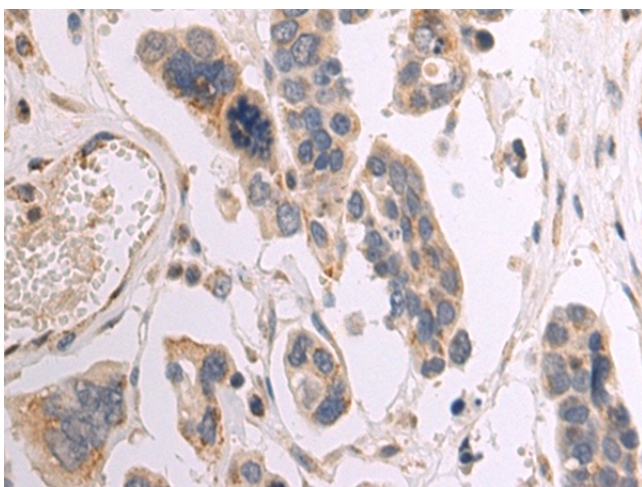
Gel: 12%SDS-PAGE
Lysate: 40 µg
Lane 1-2: LOVO and HepG2 cell lysates
Primary antibody: [TA323103] (COX6B1 Antibody) at dilution 1/1000
Secondary antibody: Goat anti rabbit IgG at 1/5000 dilution
Exposure time: 2 minutes



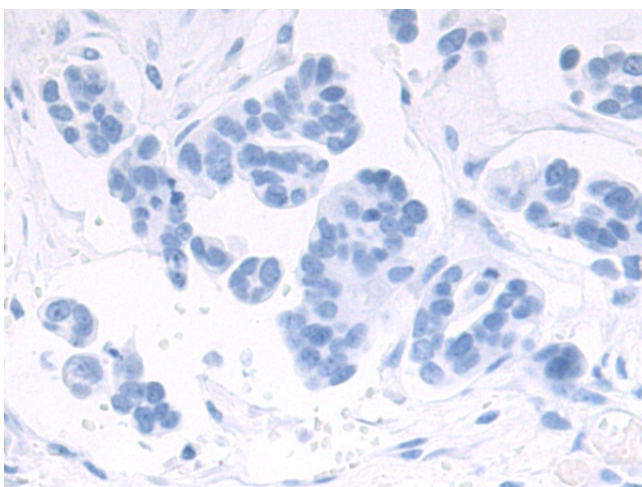
Immunohistochemistry of paraffin-embedded Human prostate cancer tissue using [TA323103] (COX6B1 Antibody) at dilution 1/95 (Original magnification: $\times 200$)



Immunohistochemistry of paraffin-embedded Human prostate cancer tissue using [TA323103] (COX6B1 Antibody) at dilution 1/95, treated with fusion protein. (Original magnification: $\times 200$)



Immunohistochemistry of paraffin-embedded Human colorectal cancer tissue using [TA323103] (COX6B1 Antibody) at dilution 1/95 (Original magnification: $\times 200$)



Immunohistochemistry of paraffin-embedded Human colorectal cancer tissue using [TA323103] (COX6B1 Antibody) at dilution 1/95, treated with fusion protein. (Original magnification: $\times 200$)