

## Product datasheet for TA323102

### Cytochrome C Oxidase subunit VIb (COX6B1) Rabbit Polyclonal Antibody

#### Product data:

Product Type:	Primary Antibodies
Applications:	IHC, WB
Recommended Dilution:	ELISA: 1:500-10000, WB: 1:1000-5000, IHC: 1:25-100
Reactivity:	Human, Mouse, Rat
Host:	Rabbit
Isotype:	IgG
Clonality:	Polyclonal
Immunogen:	Full length fusion protein
Formulation:	PBS pH7.3, 0.05% NaN <sub>3</sub> , 50% glycerol
Concentration:	lot specific
Purification:	Antigen affinity purification
Conjugation:	Unconjugated
Storage:	Store at -20°C as received.
Stability:	Stable for 12 months from date of receipt.
Predicted Protein Size:	10 kDa
Gene Name:	cytochrome c oxidase subunit 6B1
Database Link:	<a href="#">NP_001854</a> <a href="#">Entrez Gene 110323</a> <a href="#">MouseEntrez Gene 688869</a> <a href="#">RatEntrez Gene 502592</a> <a href="#">RatEntrez Gene 1340</a> <a href="#">Human</a> <a href="#">P14854</a>



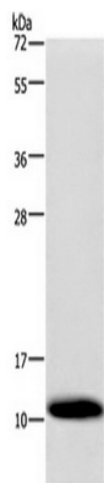
[View online »](#)

**Background:** Cytochrome c oxidase (COX); the terminal enzyme of the mitochondrial respiratory chain; catalyzes the electron transfer from reduced cytochrome c to oxygen. It is a heteromeric complex consisting of 3 catalytic subunits encoded by mitochondrial genes and multiple structural subunits encoded by nuclear genes. The mitochondrially-encoded subunits function in electron transfer; and the nuclear-encoded subunits may be involved in the regulation and assembly of the complex. This nuclear gene encodes subunit VIb. Mutations in this gene are associated with severe infantile encephalomyopathy. Three pseudogenes COX6BP-1; COX6BP-2 and COX6BP-3 have been found on chromosomes 7; 17 and 22q13.1-13.2; respectively.

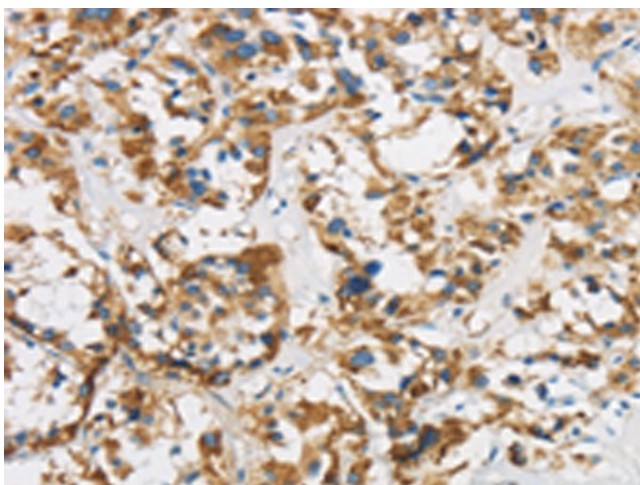
**Synonyms:** COX6B; COXG; COXVIb1

**Protein Pathways:** Alzheimer's disease, Cardiac muscle contraction, Huntington's disease, Metabolic pathways, Oxidative phosphorylation, Parkinson's disease

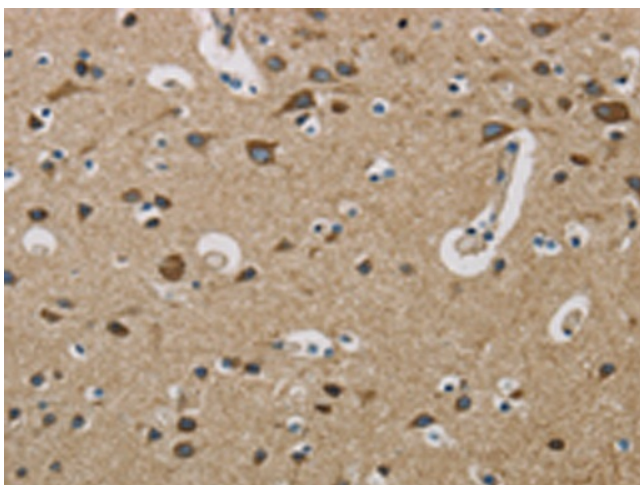
**Product images:**



Gel: 10%SDS-PAGE, Lysate: 40 ug, Primary antibody: COX6B1 Antibody at dilution 1/1200 dilution, Secondary antibody: Goat anti rabbit IgG at 1/8000 dilution, Exposure time: 1 minute



The image is immunohistochemistry of paraffin-embedded Human thyroid cancer tissue using COX6B1 Antibody at dilution 1/50. (Original magnification:  $\times 200$ )



The image is immunohistochemistry of paraffin-embedded Human brain tissue using COX6B1 Antibody at dilution 1/50. (Original magnification:  $\times 200$ )