

Product datasheet for **TA323098**

Casein Kinase 1 alpha (CSNK1A1) Rabbit Polyclonal Antibody

Product data:

Product Type:	Primary Antibodies
Applications:	IHC, WB
Recommended Dilution:	WB: 200-1000 WB positive control: A549 cells IHC: 25-100 Positive control: Human prostate cancer Predicted cell location: Cytoplasm
Reactivity:	Human, Mouse
Host:	Rabbit
Isotype:	IgG
Clonality:	Polyclonal
Immunogen:	Synthetic peptide corresponding to a region derived from 316-329 amino acids of Human Casein kinase I isoform alpha
Formulation:	PBS pH7.3, 0.05% NaN ₃ , 50% glycerol
Concentration:	lot specific
Purification:	Antigen affinity purification
Conjugation:	Unconjugated
Storage:	Store at -20°C as received.
Stability:	Stable for 12 months from date of receipt.
Gene Name:	casein kinase 1 alpha 1
Database Link:	NP_001883 Entrez Gene 93687 Mouse Entrez Gene 1452 Human P48729
Background:	Casein kinase; a ubiquitous; well-conserved protein kinase involved in cell metabolism and differentiation; is characterised by its preference for Serine or Threonine in acidic stretches of amino acids. The enzyme is a tetramer of 2 alpha- and 2 beta-subunits. The alpha-subunit is the catalytic unit and contains regions characteristic of serine/threonine protein kinases.
Synonyms:	CK1; CK1a; CKIa; HEL-S-77p; HLCDGP1; PRO2975

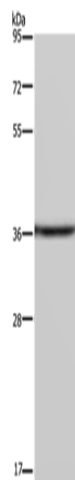


[View online »](#)

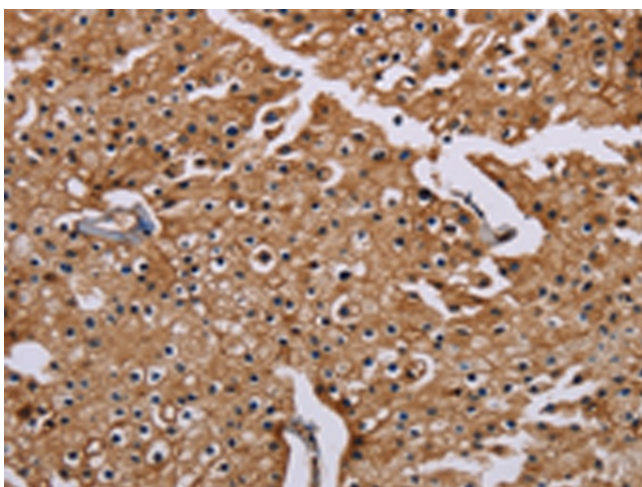
Protein Families: Druggable Genome, ES Cell Differentiation/IPS, Protein Kinase

Protein Pathways: Hedgehog signaling pathway, Wnt signaling pathway

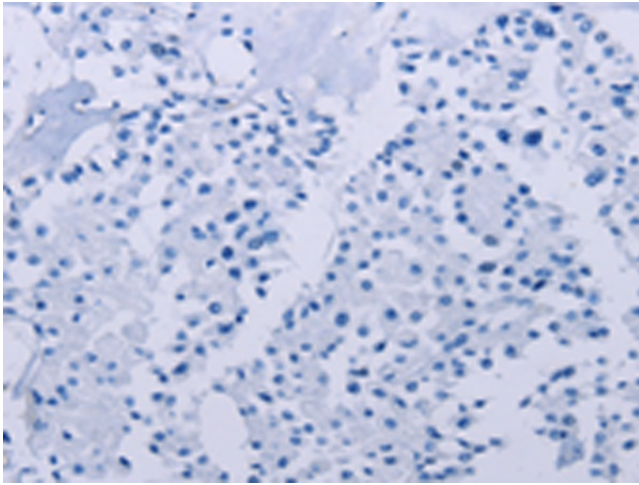
Product images:



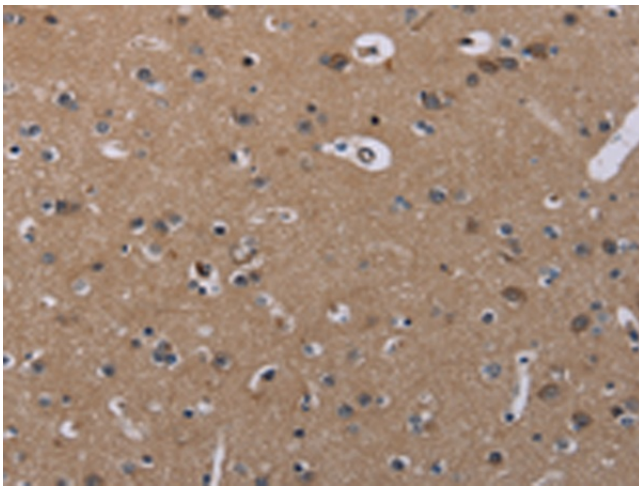
Gel: 8%SDS-PAGE
Lysate: 40 µg
Lane: A549 cells
Primary antibody: TA323098 (CSNK1A1 Antibody) at dilution 1/200
Secondary antibody: Goat anti rabbit IgG at 1/8000 dilution
Exposure time: 10 minutes



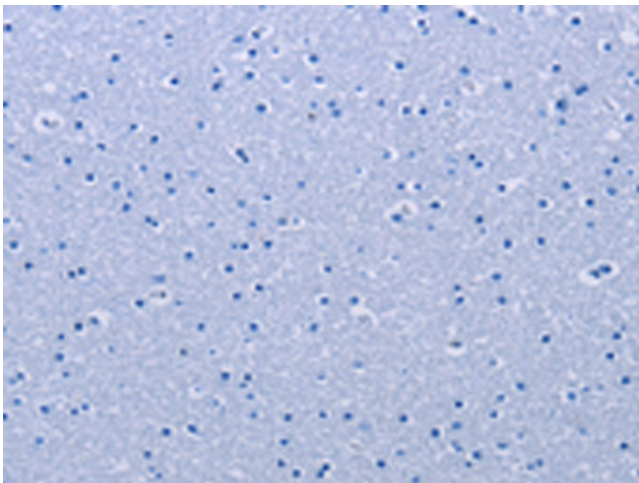
Immunohistochemistry of paraffin-embedded Human prostate cancer tissue using TA323098 (CSNK1A1 Antibody) at dilution 1/20 (Original magnification: ×200)



Immunohistochemistry of paraffin-embedded Human prostate cancer tissue using TA323098 (CSNK1A1 Antibody) at dilution 1/20, treated with synthetic peptide. (Original magnification: ×200)



Immunohistochemistry of paraffin-embedded Human brain tissue using TA323098 (CSNK1A1 Antibody) at dilution 1/20 (Original magnification: ×200)



Immunohistochemistry of paraffin-embedded Human brain tissue using TA323098 (CSNK1A1 Antibody) at dilution 1/20, treated with synthetic peptide. (Original magnification: ×200)