

## Product datasheet for **TA323095S**

### CKII alpha (CSNK2A1) Rabbit Polyclonal Antibody

#### Product data:

Product Type:	Primary Antibodies
Applications:	IHC, WB
Recommended Dilution:	WB: 500-2000 WB positive control: K562 and 293T cells, Jurkat cells and mouse brain tissue IHC: 25-100 Positive control: Human liver cancer Predicted cell location: Cytoplasm and Nucleus
Reactivity:	Human, Mouse, Rat
Host:	Rabbit
Isotype:	IgG
Clonality:	Polyclonal
Immunogen:	Fusion protein corresponding to a region derived from 39-324 amino acids of human casein kinase 2, alpha 1 polypeptide
Formulation:	PBS pH7.3, 0.05% NaN <sub>3</sub> , 50% glycerol
Purification:	Antigen affinity purification
Conjugation:	Unconjugated
Storage:	Store at -20°C as received.
Stability:	Stable for 12 months from date of receipt.
Predicted Protein Size:	45 kDa
Gene Name:	casein kinase 2 alpha 1
Database Link:	<a href="#">NP_001886</a> <a href="#">Entrez Gene 12995 MouseEntrez Gene 116549 RatEntrez Gene 1457 Human P68400</a>



[View online »](#)

**Background:**

Casein kinase II is a serine/threonine protein kinase that phosphorylates acidic proteins such as casein. The kinase exists as a tetramer and is composed of an alpha; an alpha-prime; and two beta subunits. The alpha subunits contain the catalytic activity while the beta subunits undergo autophosphorylation. The protein encoded by this gene represents the alpha subunit. While this gene is found on chromosome 20; a related transcribed pseudogene is found on chromosome 11. Three transcript variants encoding two different proteins have been found for this gene.

**Synonyms:**

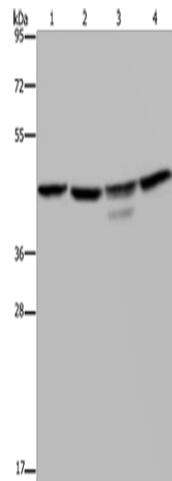
CK2A1; CKII; CSNK2A3

**Protein Families:**

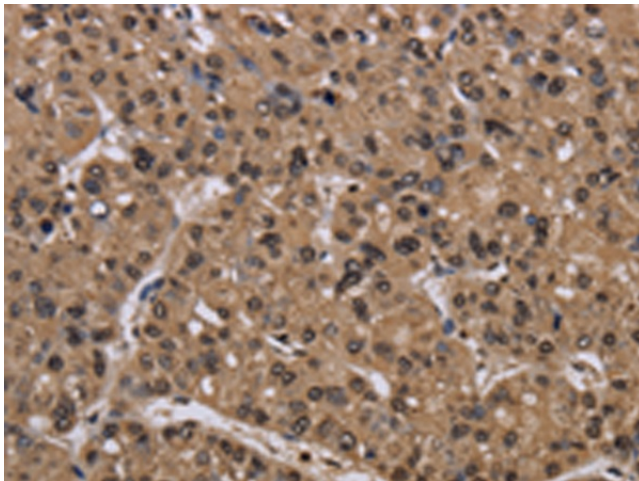
Druggable Genome, ES Cell Differentiation/IPS, Protein Kinase

**Protein Pathways:**

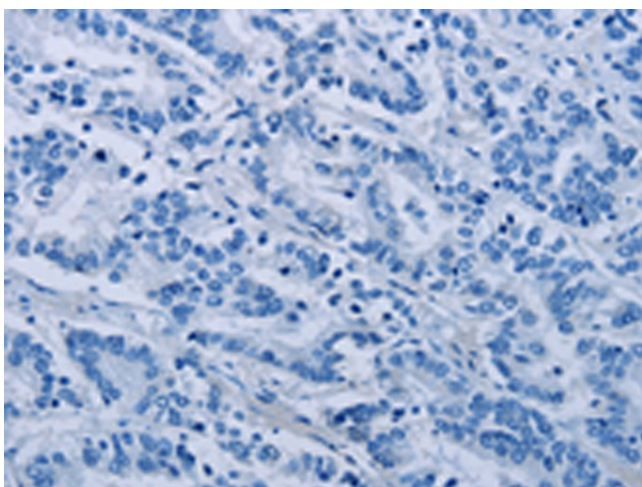
Adherens junction, Tight junction, Wnt signaling pathway

**Product images:**

Gel: 8%SDS-PAGE  
Lysate: 40 µg  
Lane 1-4: K562 cells  
293T cells  
Jurkat cells  
mouse brain tissue  
Primary antibody: [TA323095] (CSNK2A1 Antibody) at dilution 1/300  
Secondary antibody: Goat anti rabbit IgG at 1/8000 dilution  
Exposure time: 10 seconds



Immunohistochemistry of paraffin-embedded Human liver cancer tissue using [TA323095] (CSNK2A1 Antibody) at dilution 1/30 (Original magnification: x200)



Immunohistochemistry of paraffin-embedded Human liver cancer tissue using [TA323095] (CSNK2A1 Antibody) at dilution 1/30, treated with fusion protein. (Original magnification: ×200)