

## Product datasheet for **TA323092S**

### CCN2 Rabbit Polyclonal Antibody

#### Product data:

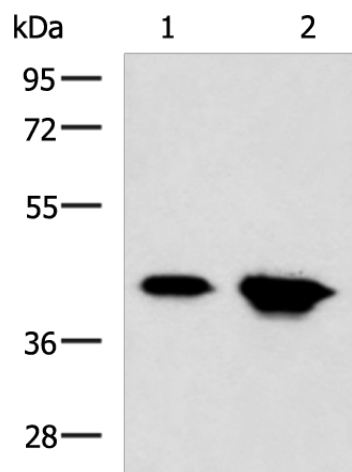
|                         |   |
|-------------------------|---|
| Product Type:           | Primary Antibodies  |
| Applications:           | IHC, WB   |
| Recommended Dilution:   | WB: 1000-5000<br>WB positive control: HepG2 and Hela cell lysates<br>IHC: 25-100<br>Positive control: Human liver cancer<br>Predicted cell location: Secreted   |
| Reactivity:             | Human, Mouse, Rat   |
| Host:                   | Rabbit  |
| Isotype:                | IgG   |
| Clonality:              | Polyclonal  |
| Immunogen:              | Synthetic peptide corresponding to a region derived from 148-159 amino acids of Human Connective tissue growth factor   |
| Formulation:            | PBS pH7.3, 0.05% NaN <sub>3</sub> , 50% glycerol  |
| Purification:           | Antigen affinity purification   |
| Conjugation:            | Unconjugated  |
| Storage:                | Store at -20°C as received.   |
| Stability:              | Stable for 12 months from date of receipt.  |
| Predicted Protein Size: | 38 kDa  |
| Gene Name:              | connective tissue growth factor   |
| Database Link:          | <a href="#">NP_001892</a><br><a href="#">Entrez Gene 14219 Mouse</a> <a href="#">Entrez Gene 64032 Rat</a> <a href="#">Entrez Gene 1490 Human</a><br><a href="#">P29279</a>   |
| Background:             | The protein encoded by this gene is a mitogen that is secreted by vascular endothelial cells. The encoded protein plays a role in chondrocyte proliferation and differentiation; cell adhesion in many cell types; and is related to platelet-derived growth factor. Certain polymorphisms in this gene have been linked with a higher incidence of systemic sclerosis. |
| Synonyms:               | CCN2; HCS24; IGFBP8; NOV2   |



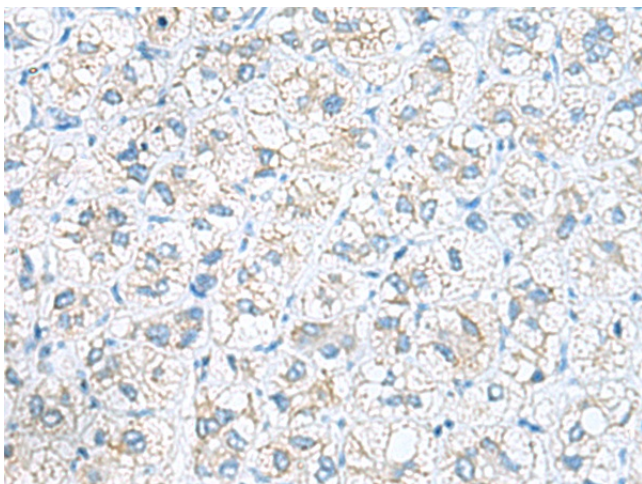
[View online »](#)

Protein Families: Druggable Genome, Secreted Protein

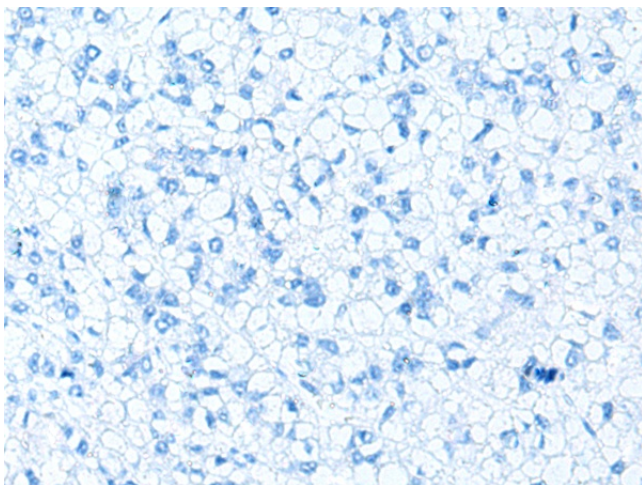
### Product images:



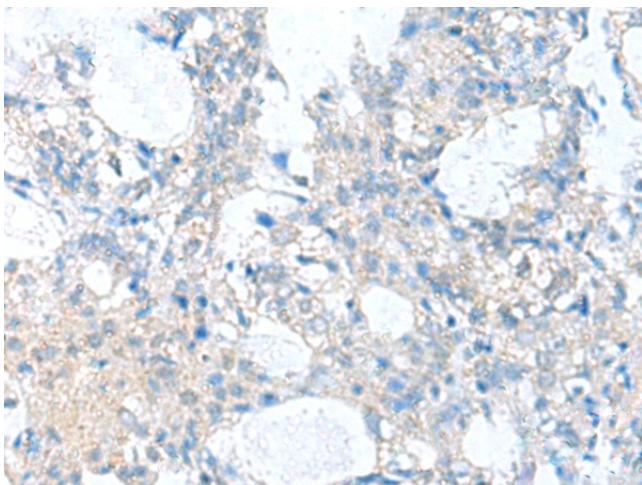
Gel: 8%SDS-PAGE  
Lysate: 40  $\mu$ g  
Lane 1-2: HepG2 and HeLa cell lysates  
Primary antibody: [TA323092] (CCN2 Antibody) at dilution 1/750  
Secondary antibody: Goat anti rabbit IgG at 1/5000 dilution  
Exposure time: 3 seconds



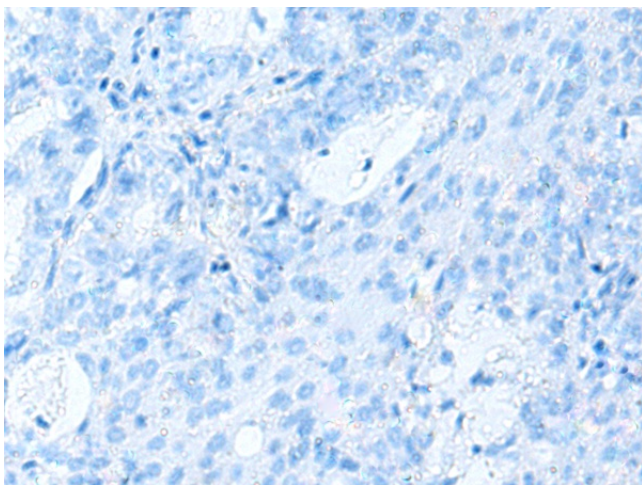
Immunohistochemistry of paraffin-embedded Human liver cancer tissue using [TA323092] (CCN2 Antibody) at dilution 1/30 (Original magnification:  $\times$ 200)



Immunohistochemistry of paraffin-embedded Human liver cancer tissue using [TA323092] (CCN2 Antibody) at dilution 1/30, treated with synthetic peptide. (Original magnification: ×200)



Immunohistochemistry of paraffin-embedded Human ovarian cancer tissue using [TA323092] (CCN2 Antibody) at dilution 1/30 (Original magnification: ×200)



Immunohistochemistry of paraffin-embedded Human ovarian cancer tissue using [TA323092] (CCN2 Antibody) at dilution 1/30, treated with synthetic peptide. (Original magnification: ×200)