

Product datasheet for **TA323088**

DDB1 Rabbit Polyclonal Antibody

Product data:

Product Type:	Primary Antibodies
Applications:	IHC, WB
Recommended Dilution:	WB: 200-500 WB positive control: Human fetal small intestine, liver cancer and Lymphoma, 293T and A549 cells IHC: 25-100 Positive control: Human cervical cancer Predicted cell location: Cytoplasm, Nucleus
Reactivity:	Human, Mouse, Rat
Host:	Rabbit
Isotype:	IgG
Clonality:	Polyclonal
Immunogen:	Synthetic peptide corresponding to a region derived from 1125-1140 amino acids of Human DNA damage-binding protein 1
Formulation:	PBS pH7.3, 0.05% NaN ₃ , 50% glycerol
Concentration:	lot specific
Purification:	Antigen affinity purification
Conjugation:	Unconjugated
Storage:	Store at -20°C as received.
Stability:	Stable for 12 months from date of receipt.
Predicted Protein Size:	127 kDa
Gene Name:	damage specific DNA binding protein 1
Database Link:	NP_001914 Entrez Gene 13194 Mouse Entrez Gene 64470 Rat Entrez Gene 1642 Human Q16531



[View online »](#)

Background:

The protein encoded by this gene is the large subunit (p127) of the heterodimeric DNA damage-binding (DDB) complex while another protein (p48) forms the small subunit. This protein complex functions in nucleotide-excision repair and binds to DNA following UV damage. Defective activity of this complex causes the repair defect in patients with xeroderma pigmentosum complementation group E (XPE) - an autosomal recessive disorder characterized by photosensitivity and early onset of carcinomas. However; it remains for mutation analysis to demonstrate whether the defect in XPE patients is in this gene or the gene encoding the small subunit. In addition; Best vitelliform macular dystrophy is mapped to the same region as this gene on 11q; but no sequence alternations of this gene are demonstrated in Best disease patients. The protein encoded by this gene also functions as an adaptor molecule for the cullin 4 (CUL4) ubiquitin E3 ligase complex by facilitating the binding of substrates to this complex and the ubiquitination of proteins.

Synonyms:

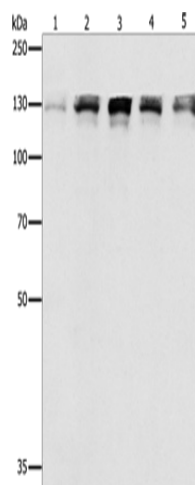
DDBA; UV-DDB1; XAP1; XPCE; XPE; XPE-BF

Protein Families:

Druggable Genome

Protein Pathways:

Nucleotide excision repair, Ubiquitin mediated proteolysis

Product images:

Gel: 8%SDS-PAGE

Lysate: 40 µg

Lane 1-5: Human fetal small intestine tissue

Human liver cancer tissue

Human lymphoma tissue

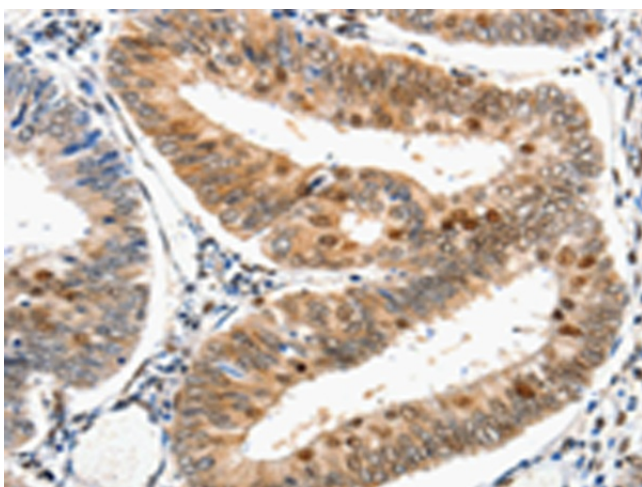
293T cells

A549 cells

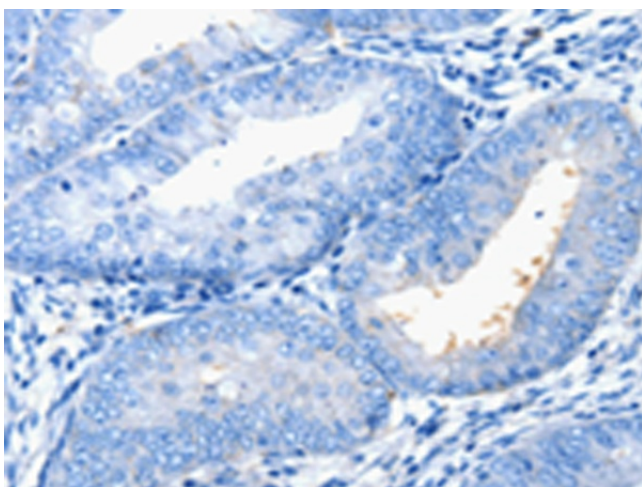
Primary antibody: TA323088 (DDB1 Antibody) at dilution 1/500

Secondary antibody: Goat anti rabbit IgG at 1/8000 dilution

Exposure time: 50 seconds



Immunohistochemistry of paraffin-embedded Human cervical cancer tissue using TA323088 (DDB1 Antibody) at dilution 1/25 (Original magnification: $\times 200$)



Immunohistochemistry of paraffin-embedded Human cervical cancer tissue using TA323088 (DDB1 Antibody) at dilution 1/25, treated with synthetic peptide. (Original magnification: $\times 200$)