

Product datasheet for **TA323085**

Cathepsin E (CTSE) Rabbit Polyclonal Antibody

Product data:

Product Type:	Primary Antibodies
Applications:	IHC, WB
Recommended Dilution:	WB: 500-2000 WB positive control: Human stomach cancer and mouse stomach tissue IHC: 50-200 Positive control: Human gastric cancer Predicted cell location: Cytoplasm
Reactivity:	Human, Mouse, Rat
Host:	Rabbit
Isotype:	IgG
Clonality:	Polyclonal
Immunogen:	Fusion protein corresponding to a region derived from 57-367 amino acids of Human Cathepsin E
Formulation:	PBS pH7.3, 0.05% NaN ₃ , 50% glycerol
Concentration:	lot specific
Purification:	Antigen affinity purification
Conjugation:	Unconjugated
Storage:	Store at -20°C as received.
Stability:	Stable for 12 months from date of receipt.
Gene Name:	cathepsin E
Database Link:	NP_001901 Entrez Gene 13034 Mouse Entrez Gene 25424 Rat Entrez Gene 1510 Human P14091



[View online »](#)

Background:

The protein encoded by this gene is a gastric aspartyl protease that functions as a disulfide-linked homodimer. This protease; which is a member of the peptidase C1 family; has a specificity similar to that of pepsin A and cathepsin D. It is an intracellular proteinase that does not appear to be involved in the digestion of dietary protein and is found in highest concentration in the surface of epithelial mucus-producing cells of the stomach. It is the first aspartic proteinase expressed in the fetal stomach and is found in more than half of gastric cancers. It appears; therefore; to be an oncofetal antigen. Transcript variants utilizing alternative polyadenylation signals and two transcript variants encoding different isoforms exist for this gene.

Synonyms:

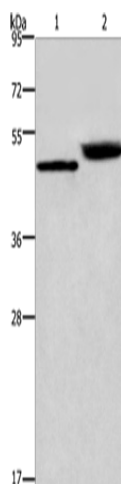
CATE

Protein Families:

Druggable Genome, Protease

Protein Pathways:

Lysosome

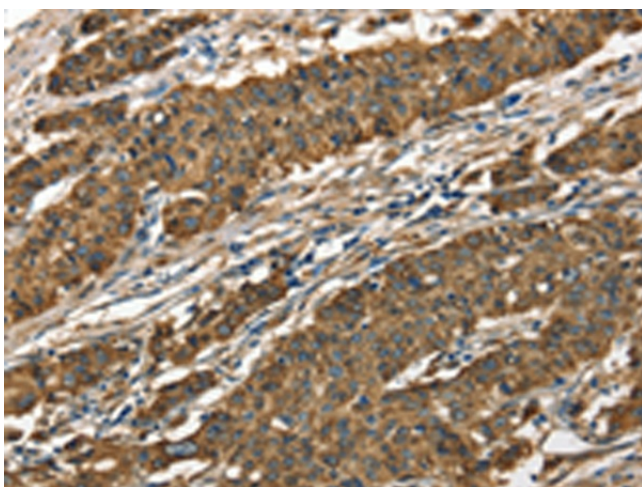
Product images:

Gel: 8%SDS-PAGE

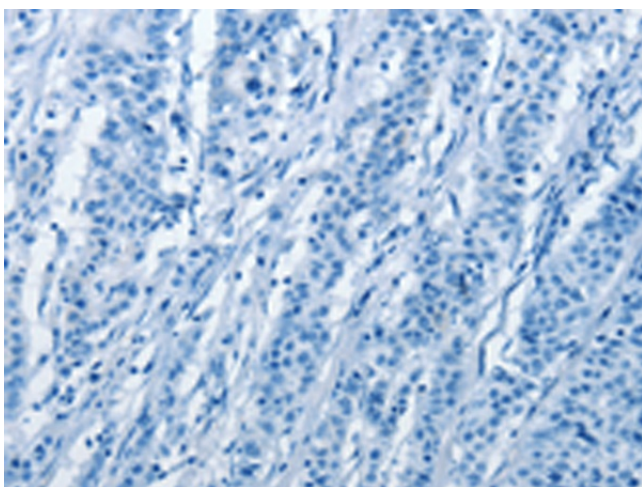
Lysate: 40 µg

Lane 1-2: Human stomach cancer tissue
mouse stomach tissuePrimary antibody: TA323085 (CTSE Antibody) at
dilution 1/450Secondary antibody: Goat anti rabbit IgG at
1/8000 dilution

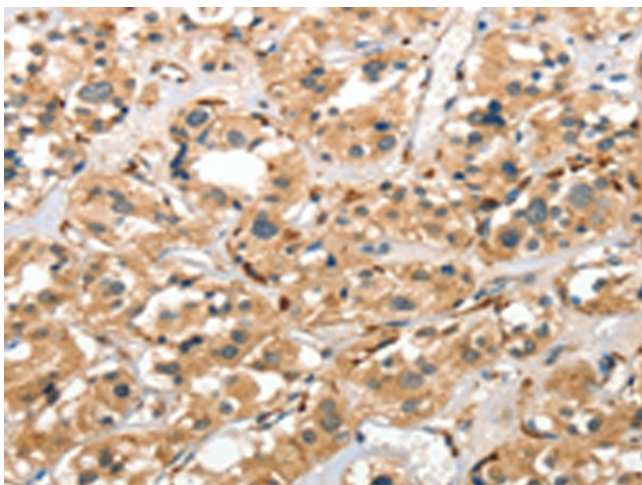
Exposure time: 20 seconds



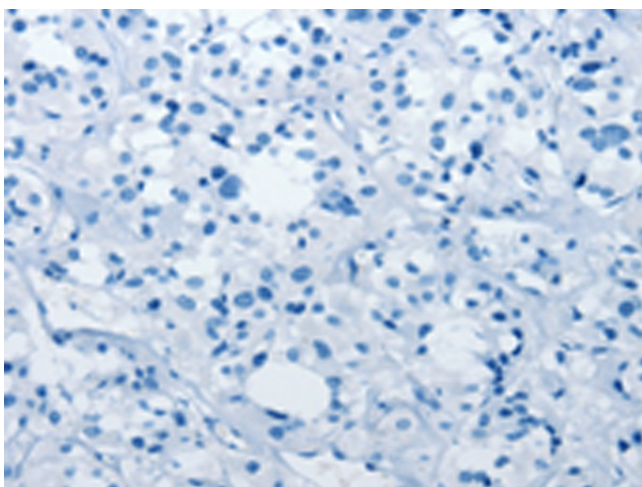
Immunohistochemistry of paraffin-embedded Human gastric cancer tissue using TA323085 (CTSE Antibody) at dilution 1/40 (Original magnification: $\times 200$)



Immunohistochemistry of paraffin-embedded Human gastric cancer tissue using TA323085 (CTSE Antibody) at dilution 1/40, treated with fusion protein. (Original magnification: $\times 200$)



Immunohistochemistry of paraffin-embedded Human thyroid cancer tissue using TA323085 (CTSE Antibody) at dilution 1/40 (Original magnification: $\times 200$)



Immunohistochemistry of paraffin-embedded Human thyroid cancer tissue using TA323085 (CTSE Antibody) at dilution 1/40, treated with fusion protein. (Original magnification: ×200)