

Product datasheet for **TA323084**

DUSP6 Rabbit Polyclonal Antibody

Product data:

Product Type:	Primary Antibodies
Applications:	IHC
Recommended Dilution:	IHC: 50-200 Positive control: Human colon cancer Predicted cell location: Cytoplasm
Reactivity:	Human, Mouse, Rat
Host:	Rabbit
Isotype:	IgG
Clonality:	Polyclonal
Immunogen:	Fusion protein corresponding to a region derived from 206-381 amino acids of human dual specificity phosphatase 6
Formulation:	PBS pH7.3, 0.05% NaN ₃ , 50% glycerol
Concentration:	lot specific
Purification:	Antigen affinity purification
Conjugation:	Unconjugated
Storage:	Store at -20°C as received.
Stability:	Stable for 12 months from date of receipt.
Gene Name:	dual specificity phosphatase 6
Database Link:	NP_001937 Entrez Gene 67603 Mouse Entrez Gene 116663 Rat Entrez Gene 1848 Human Q16828



[View online »](#)

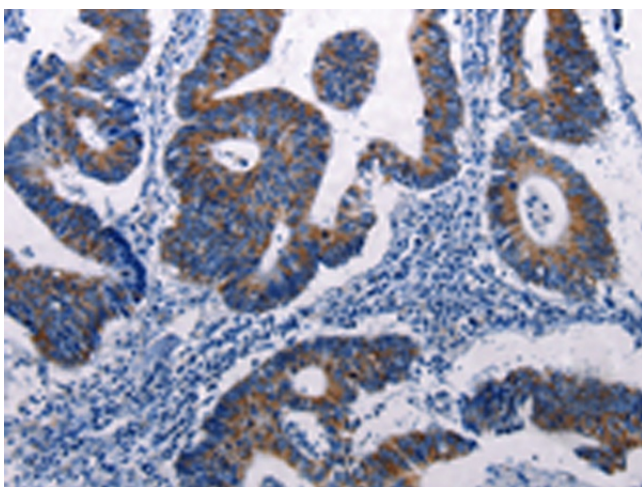
Background: The protein encoded by this gene is a member of the dual specificity protein phosphatase subfamily. These phosphatases inactivate their target kinases by dephosphorylating both the phosphoserine/threonine and phosphotyrosine residues. They negatively regulate members of the mitogen-activated protein (MAP) kinase superfamily (MAPK/ERK; SAPK/JNK; p38); which are associated with cellular proliferation and differentiation. Different members of the family of dual specificity phosphatases show distinct substrate specificities for various MAP kinases; different tissue distribution and subcellular localization; and different modes of inducibility of their expression by extracellular stimuli. This gene product inactivates ERK2; is expressed in a variety of tissues with the highest levels in heart and pancreas; and unlike most other members of this family; is localized in the cytoplasm. Two transcript variants encoding different isoforms have been found for this gene.?

Synonyms: HH19; MKP3; PYST1

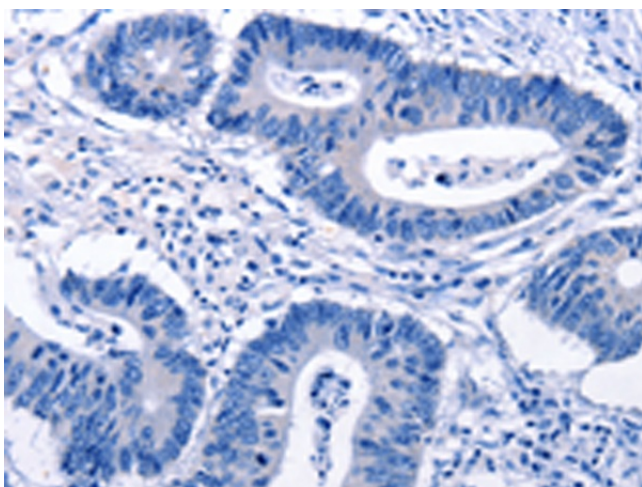
Protein Families: Druggable Genome, Phosphatase

Protein Pathways: MAPK signaling pathway

Product images:



Immunohistochemistry of paraffin-embedded Human colon cancer tissue using TA323084 (DUSP6 Antibody) at dilution 1/50 (Original magnification: ×200)



Immunohistochemistry of paraffin-embedded Human colon cancer tissue using TA323084 (DUSP6 Antibody) at dilution 1/50, treated with fusion protein. (Original magnification: $\times 200$)