

Product datasheet for **TA323083**

DUSP6 Rabbit Polyclonal Antibody

Product data:

Product Type:	Primary Antibodies
Applications:	IHC, WB
Recommended Dilution:	WB: 500-2000 WB positive control: Jurkat cells and human fetal kidney tissue IHC: 25-100 Positive control: Human ovarian cancer Predicted cell location: Cytoplasm
Reactivity:	Human, Mouse, Rat
Host:	Rabbit
Isotype:	IgG
Clonality:	Polyclonal
Immunogen:	Fusion protein corresponding to a region derived from 206-381 amino acids of human dual specificity phosphatase 6
Formulation:	PBS pH7.3, 0.05% NaN ₃ , 50% glycerol
Concentration:	lot specific
Purification:	Antigen affinity purification
Conjugation:	Unconjugated
Storage:	Store at -20°C as received.
Stability:	Stable for 12 months from date of receipt.
Predicted Protein Size:	27 kDa
Gene Name:	dual specificity phosphatase 6
Database Link:	NP_001937 Entrez Gene 67603 Mouse Entrez Gene 116663 Rat Entrez Gene 1848 Human Q16828



[View online »](#)

Background:

The protein encoded by this gene is a member of the dual specificity protein phosphatase subfamily. These phosphatases inactivate their target kinases by dephosphorylating both the phosphoserine/threonine and phosphotyrosine residues. They negatively regulate members of the mitogen-activated protein (MAP) kinase superfamily (MAPK/ERK; SAPK/JNK; p38); which are associated with cellular proliferation and differentiation. Different members of the family of dual specificity phosphatases show distinct substrate specificities for various MAP kinases; different tissue distribution and subcellular localization; and different modes of inducibility of their expression by extracellular stimuli. This gene product inactivates ERK2; is expressed in a variety of tissues with the highest levels in heart and pancreas; and unlike most other members of this family; is localized in the cytoplasm. Two transcript variants encoding different isoforms have been found for this gene.?

Synonyms:

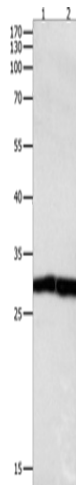
HH19; MKP3; PYST1

Protein Families:

Druggable Genome, Phosphatase

Protein Pathways:

MAPK signaling pathway

Product images:

Gel: 10%SDS-PAGE

Lysate: 30 µg

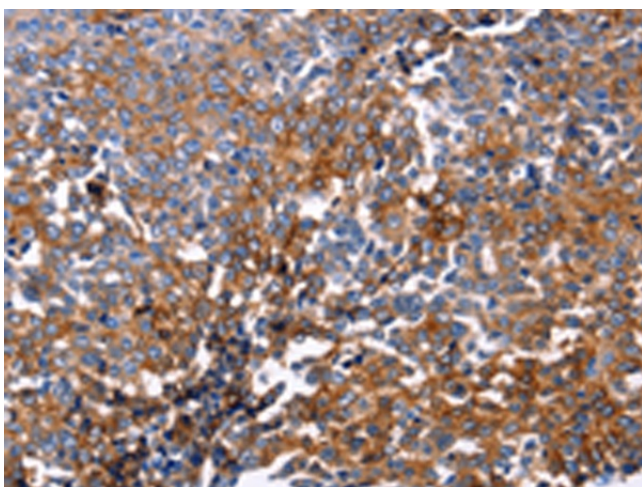
Lane 1-2: Jurkat cells

human fetal kidney tissue

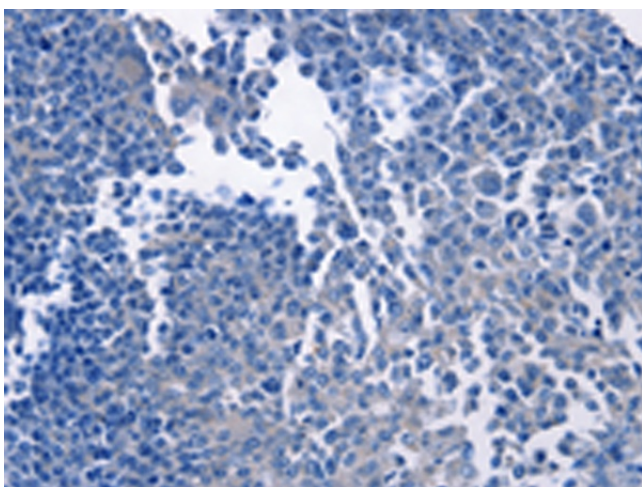
Primary antibody: TA323083 (DUSP6 Antibody) at dilution 1/450

Secondary antibody: Goat anti rabbit IgG at 1/8000 dilution

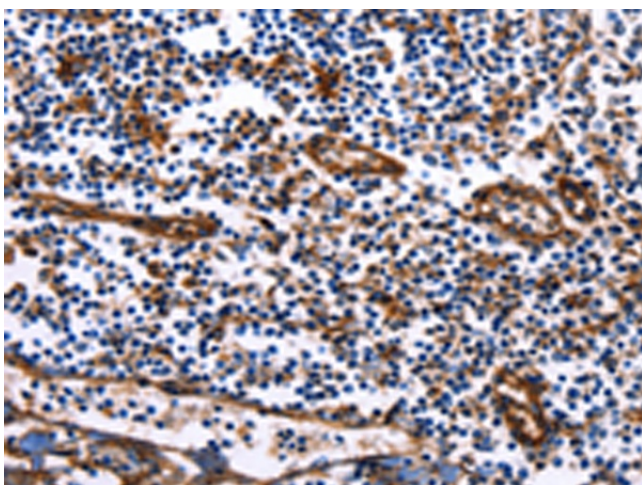
Exposure time: 1 minute



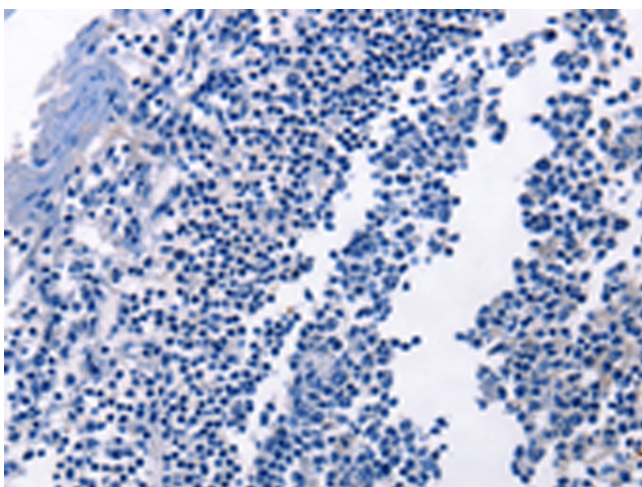
Immunohistochemistry of paraffin-embedded Human ovarian cancer tissue using TA323083 (DUSP6 Antibody) at dilution 1/25 (Original magnification: $\times 200$)



Immunohistochemistry of paraffin-embedded Human ovarian cancer tissue using TA323083 (DUSP6 Antibody) at dilution 1/25, treated with fusion protein. (Original magnification: $\times 200$)



Immunohistochemistry of paraffin-embedded Human tonsil tissue using TA323083 (DUSP6 Antibody) at dilution 1/25 (Original magnification: $\times 200$)



Immunohistochemistry of paraffin-embedded Human tonsil tissue using TA323083 (DUSP6 Antibody) at dilution 1/25, treated with fusion protein. (Original magnification: $\times 200$)