

Product datasheet for **TA323082**

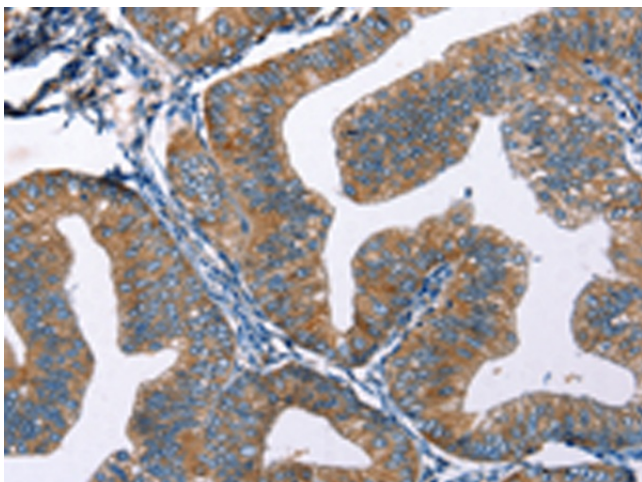
Endothelin 2 (EDN2) Rabbit Polyclonal Antibody

Product data:

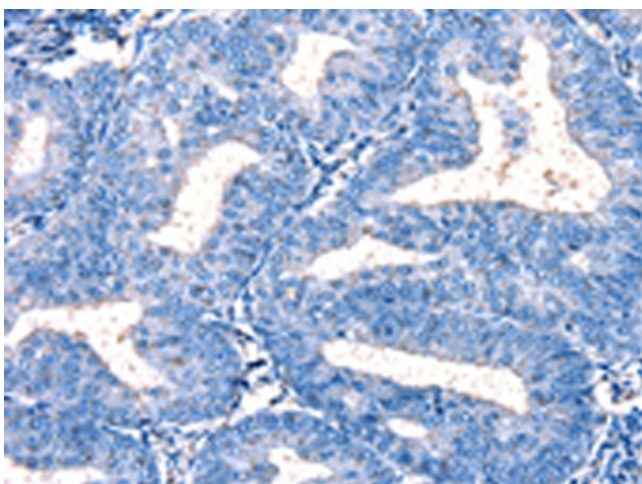
Product Type:	Primary Antibodies
Applications:	IHC
Recommended Dilution:	IHC: 50-200 Positive control: Human cervical cancer Predicted cell location: Cytoplasm
Reactivity:	Human
Host:	Rabbit
Isotype:	IgG
Clonality:	Polyclonal
Immunogen:	Fusion protein corresponding to a region derived from 25-178 amino acids of human endothelin 2
Formulation:	PBS pH7.3, 0.05% NaN ₃ , 50% glycerol
Concentration:	lot specific
Purification:	Antigen affinity purification
Conjugation:	Unconjugated
Storage:	Store at -20°C as received.
Stability:	Stable for 12 months from date of receipt.
Gene Name:	endothelin 2
Database Link:	NP_001947 Entrez Gene 1907 Human P20800
Background:	Endothelin 2; also known as ET-2; is a protein that in humans is encoded by the EDN2 gene. This gene encodes a member of the endothelin protein family of secretory vasoconstrictive peptides. The preproprotein is processed to a short mature form which functions as a ligand for the endothelin receptors that initiate intracellular signaling events. This gene product is involved in a wide range of biological processes; such as hypertension and ovulation.?
Synonyms:	ET-2; ET2; PPET2
Protein Families:	Druggable Genome, Secreted Protein



[View online »](#)

Product images:

Immunohistochemistry of paraffin-embedded Human cervical cancer tissue using TA323082 (EDN2 Antibody) at dilution 1/50 (Original magnification: $\times 200$)



Immunohistochemistry of paraffin-embedded Human cervical cancer tissue using TA323082 (EDN2 Antibody) at dilution 1/50, treated with fusion protein. (Original magnification: $\times 200$)