

## Product datasheet for **TA323081**

### EGR4 Rabbit Polyclonal Antibody

#### Product data:

Product Type:	Primary Antibodies
Applications:	IHC, WB
Recommended Dilution:	WB: 500-2000 WB positive control: Human fetal brain and Mouse brain tissue IHC: 25-100 Positive control: Human thyroid cancer Predicted cell location: Cytoplasm
Reactivity:	Human, Mouse
Host:	Rabbit
Isotype:	IgG
Clonality:	Polyclonal
Immunogen:	Synthetic peptide corresponding to a region derived from 219-232 amino acids of Human early growth response 4
Formulation:	PBS pH7.3, 0.05% NaN <sub>3</sub> , 50% glycerol
Concentration:	lot specific
Purification:	Antigen affinity purification
Conjugation:	Unconjugated
Storage:	Store at -20°C as received.
Stability:	Stable for 12 months from date of receipt.
Predicted Protein Size:	51 kDa
Gene Name:	early growth response 4
Database Link:	<a href="#">NP_001956</a> <a href="#">Entrez Gene 13656 Mouse</a> <a href="#">Entrez Gene 1961 Human</a> <a href="#">Q05215</a>



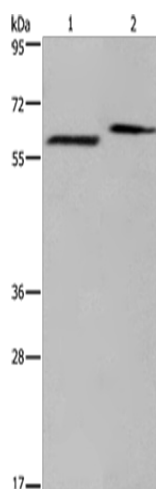
[View online »](#)

**Background:**

Early growth response protein 4 (EGR-4); also known as AT133; is a protein that in humans is encoded by the EGR4 gene. EGR-4 is a member of the early growth response (EGF) family of zinc finger transcription factors. Transcriptional regulator. Recognizes and binds to the DNA sequence 5'-GCGGGGCG-3' (GSG). Activates the transcription of target genes whose products are required for mitogenesis and differentiation.

**Synonyms:**

NGFI-C; NGFIC; PAT133

**Product images:**

Gel: 6%SDS-PAGE

Lysate: 40  $\mu$ g

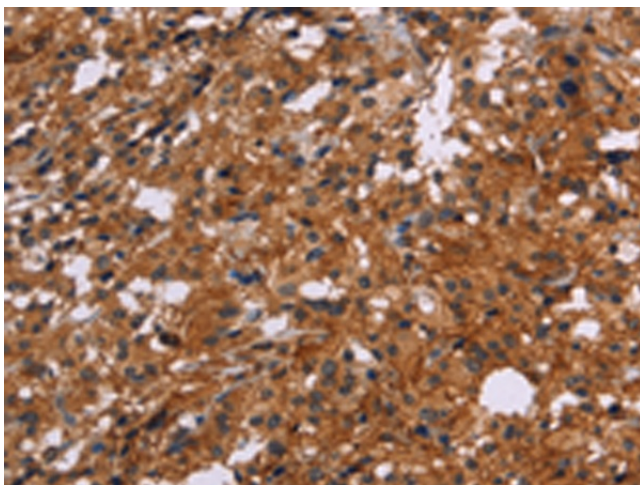
Lane 1-2: Human fetal brain tissue

Mouse brain tissue

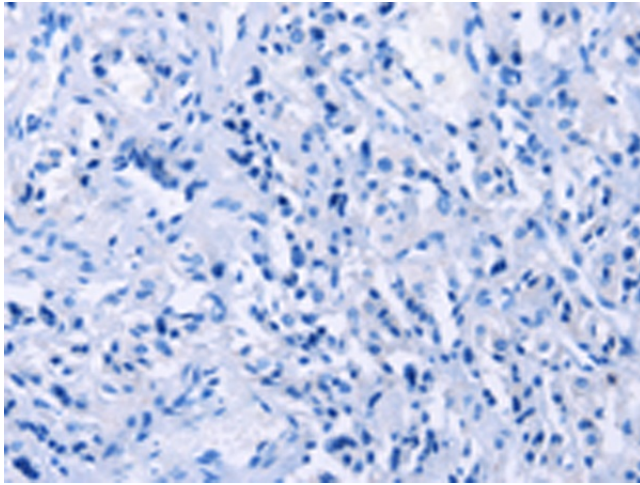
Primary antibody: TA323081 (EGR4 Antibody) at dilution 1/400

Secondary antibody: Goat anti rabbit IgG at 1/8000 dilution

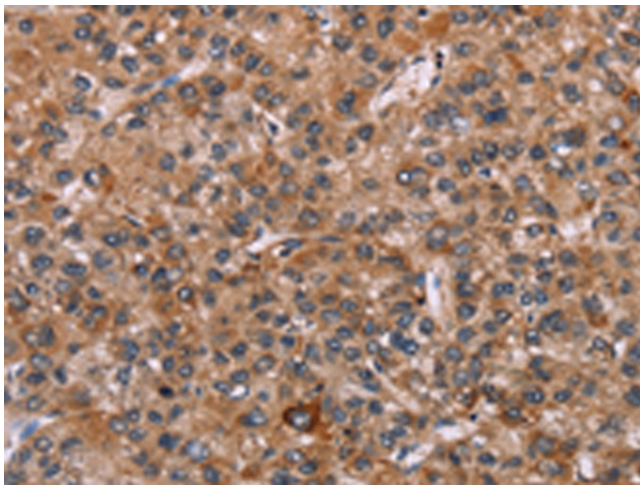
Exposure time: 2 minutes



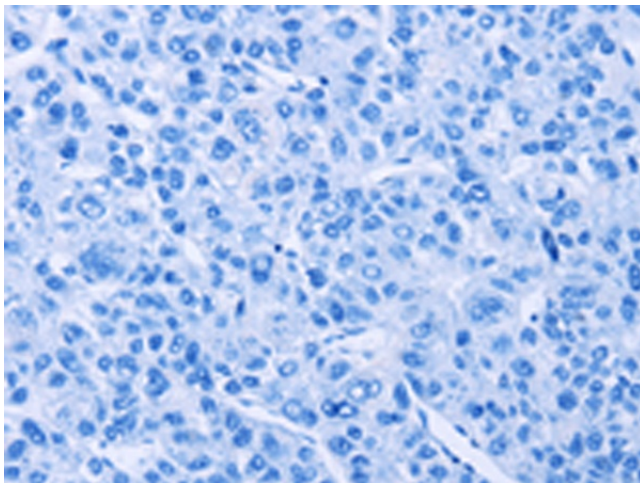
Immunohistochemistry of paraffin-embedded Human thyroid cancer tissue using TA323081 (EGR4 Antibody) at dilution 1/20 (Original magnification:  $\times 200$ )



Immunohistochemistry of paraffin-embedded Human thyroid cancer tissue using TA323081 (EGR4 Antibody) at dilution 1/20, treated with synthetic peptide. (Original magnification:  $\times 200$ )



Immunohistochemistry of paraffin-embedded Human liver cancer tissue using TA323081 (EGR4 Antibody) at dilution 1/20 (Original magnification:  $\times 200$ )



Immunohistochemistry of paraffin-embedded Human liver cancer tissue using TA323081 (EGR4 Antibody) at dilution 1/20, treated with synthetic peptide. (Original magnification:  $\times 200$ )