

Product datasheet for **TA323079S**

EGR1 Rabbit Polyclonal Antibody

Product data:

Product Type:	Primary Antibodies
Applications:	WB
Recommended Dilution:	WB: 200-1000 WB positive control: RAW264.7 and NIH/3T3 cells
Reactivity:	Human, Mouse, Rat
Host:	Rabbit
Isotype:	IgG
Clonality:	Polyclonal
Immunogen:	Fusion protein corresponding to a region derived from 87-337 amino acids of human early growth response 1 early growth response 1
Formulation:	PBS pH7.3, 0.05% NaN ₃ , 50% glycerol
Purification:	Antigen affinity purification
Conjugation:	Unconjugated
Storage:	Store at -20°C as received.
Stability:	Stable for 12 months from date of receipt.
Predicted Protein Size:	58 kDa
Gene Name:	early growth response 1
Database Link:	NP_001955 Entrez Gene 13653 Mouse Entrez Gene 24330 Rat Entrez Gene 1958 Human P18146
Background:	EGR-1 (Early growth response protein 1) also known as Zif268 (zinc finger protein 225) or NGFI-A (nerve growth factor-induced protein A) is a protein that in humans is encoded by the EGR1 gene. The protein encoded by this gene belongs to the EGR family of C2H2-type zinc-finger proteins. It is a nuclear protein and functions as a transcriptional regulator. The products of target genes it activates are required for differentiation and mitogenesis. Studies suggest this is a cancer suppressor gene. Recognizes and binds to the DNA sequence 5'-CGCCCCGC-3'(EGR-site).
Synonyms:	AT225; G0S30; KROX-24; NGFI-A; TIS8; ZIF-268; ZNF225

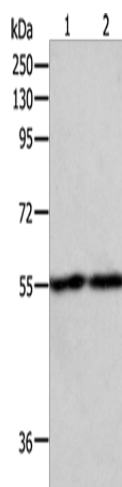


[View online »](#)

Protein Families: Druggable Genome

Protein Pathways: Prion diseases

Product images:



Gel: 8%SDS-PAGE

Lysate: 50 μ g

Lane 1-2: RAW264.7

NIH/3T3 cells

Primary antibody: [TA323079] (EGR1 Antibody) at dilution 1/400

Secondary antibody: Goat anti rabbit IgG at 1/8000 dilution

Exposure time: 2 minutes