

## Product datasheet for **TA323075**

### Filaggrin (FLG) Rabbit Polyclonal Antibody

#### Product data:

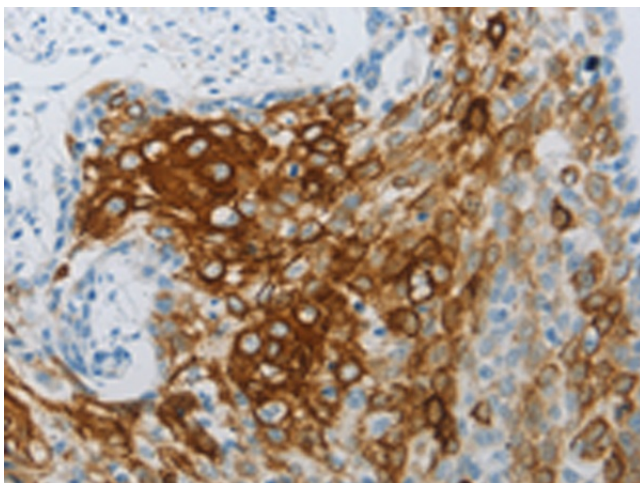
Product Type:	Primary Antibodies
Applications:	IHC
Recommended Dilution:	IHC: 25-100 Positive control: Human cervical cancer Predicted cell location: Cytoplasm
Reactivity:	Human
Host:	Rabbit
Isotype:	IgG
Clonality:	Polyclonal
Immunogen:	Synthetic peptide corresponding to a region derived from 1215-1229 amino acids of human filaggrin
Formulation:	PBS pH7.3, 0.05% NaN <sub>3</sub> , 50% glycerol
Concentration:	lot specific
Purification:	Antigen affinity purification
Conjugation:	Unconjugated
Storage:	Store at -20°C as received.
Stability:	Stable for 12 months from date of receipt.
Gene Name:	filaggrin
Database Link:	<a href="#">NP_002007</a> <a href="#">Entrez Gene 2312 Human P20930</a>
Background:	The protein encoded by this gene is an intermediate filament-associated protein that aggregates keratin intermediate filaments in mammalian epidermis. It is initially synthesized as a polyprotein precursor; profilaggrin (consisting of multiple filaggrin units of 324 aa each); which is localized in keratohyalin granules; and is subsequently proteolytically processed into individual functional filaggrin molecules. Mutations in this gene are associated with ichthyosis vulgaris.
Synonyms:	ATOD2



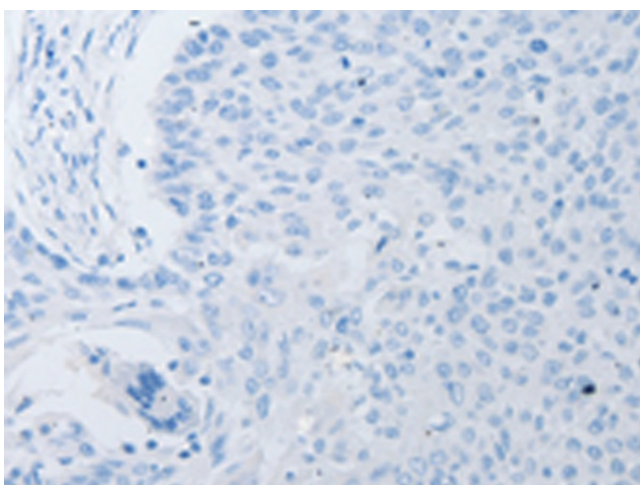
[View online »](#)

Protein Families: Druggable Genome

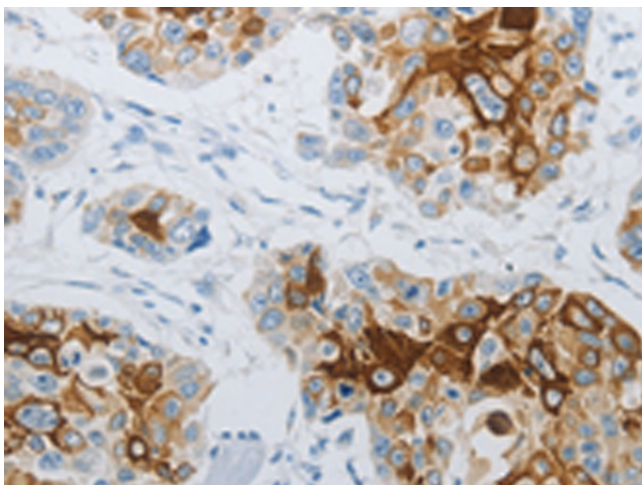
### Product images:



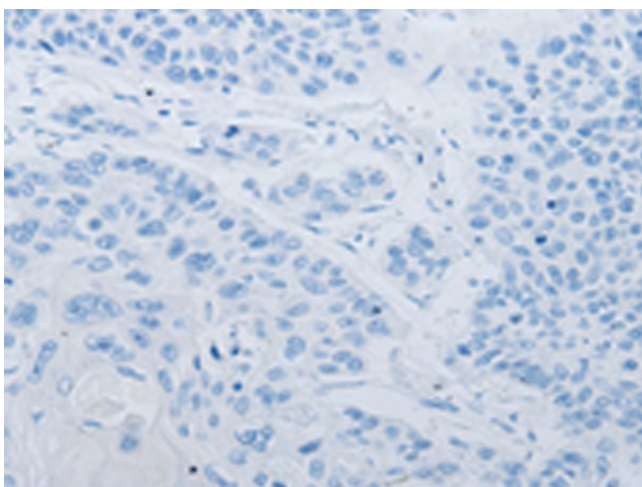
Immunohistochemistry of paraffin-embedded Human cervical cancer tissue using TA323075 (FLG Antibody) at dilution 1/30 (Original magnification:  $\times 200$ )



Immunohistochemistry of paraffin-embedded Human cervical cancer tissue using TA323075 (FLG Antibody) at dilution 1/30, treated with synthetic peptide. (Original magnification:  $\times 200$ )



Immunohistochemistry of paraffin-embedded Human esophagus cancer tissue using TA323075 (FLG Antibody) at dilution 1/30 (Original magnification:  $\times 200$ )



Immunohistochemistry of paraffin-embedded Human esophagus cancer tissue using TA323075 (FLG Antibody) at dilution 1/30, treated with synthetic peptide. (Original magnification:  $\times 200$ )