

## Product datasheet for **TA323072S**

### FOXO1 Rabbit Polyclonal Antibody

#### Product data:

Product Type:	Primary Antibodies
Applications:	IF, IHC, WB
Recommended Dilution:	WB: 500-2000 WB positive control: Hela cell lysate IHC: 25-100 Positive control: Human ovarian cancer Predicted cell location: Cytoplasm and Nucleus
Reactivity:	Human, Mouse, Rat
Modifications:	Phospho-specific
Host:	Rabbit
Isotype:	IgG
Clonality:	Polyclonal
Immunogen:	Peptide sequence around phosphorylation site of serine 256 (A-A-S(p)-M-D) derived from Human FKHR.
Formulation:	PBS pH7.3, 0.05% NaN <sub>3</sub> , 50% glycerol
Concentration:	lot specific
Purification:	Antigen affinity purification
Conjugation:	Unconjugated
Storage:	Store at -20°C as received.
Stability:	Stable for 12 months from date of receipt.
Predicted Protein Size:	70 kDa
Gene Name:	forkhead box O1
Database Link:	<a href="#">NP_002006</a> <a href="#">Entrez Gene 56458 MouseEntrez Gene 84482 RatEntrez Gene 2308 Human Q12778</a>



[View online »](#)

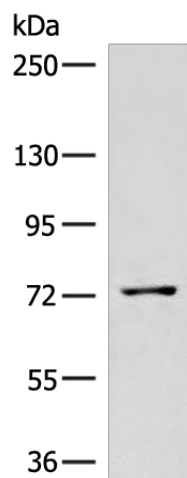
**Background:** This gene belongs to the forkhead family of transcription factors which are characterized by a distinct forkhead domain. The specific function of this gene has not yet been determined; however, it may play a role in myogenic growth and differentiation. Translocation of this gene with PAX3 has been associated with alveolar rhabdomyosarcoma.

**Synonyms:** FKH1; FKHR; FOXO1A

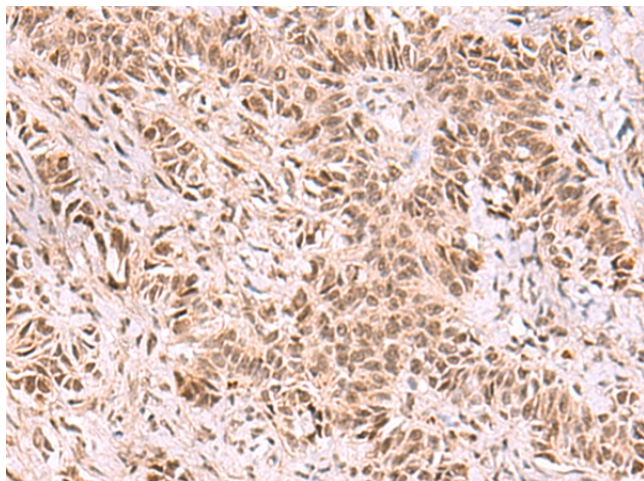
**Protein Families:** Druggable Genome, Transcription Factors

**Protein Pathways:** Insulin signaling pathway, Pathways in cancer, Prostate cancer

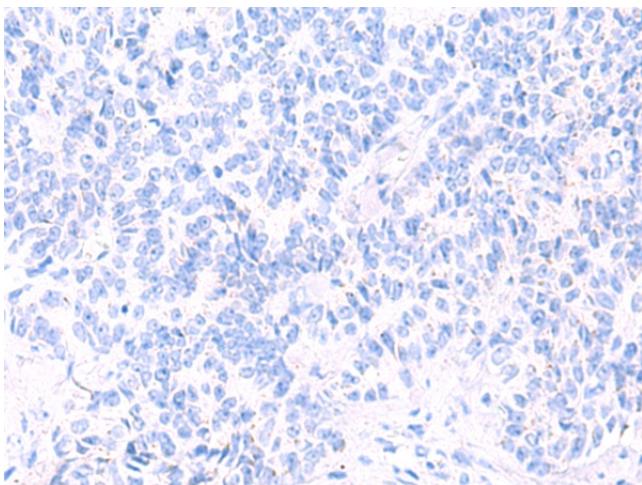
### Product images:



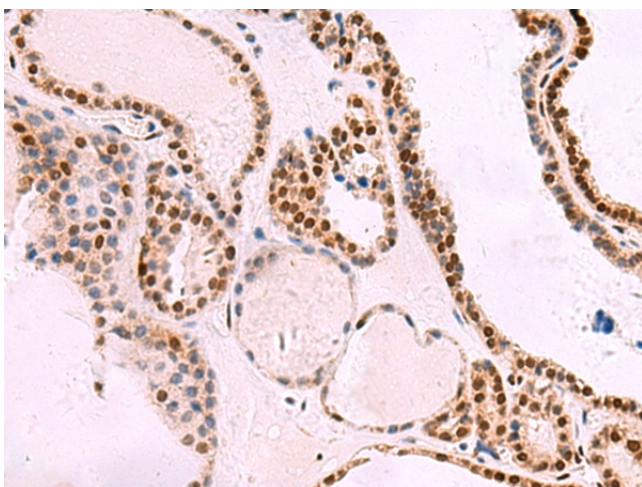
Gel: 6%SDS-PAGE  
Lysate: 40  $\mu$ g  
Lane: HeLa cell lysate  
Primary antibody: [TA323072] (FOXO1 (Phospho-Ser256) Antibody) at dilution 1/500  
Secondary antibody: Goat anti rabbit IgG at 1/8000 dilution  
Exposure time: 1 minute



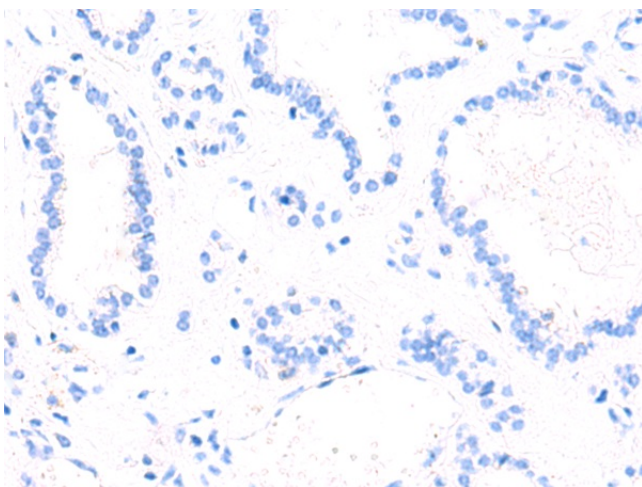
Immunohistochemistry of paraffin-embedded Human ovarian cancer tissue using [TA323072] (FOXO1 (Phospho-Ser256) Antibody) at dilution 1/25 (Original magnification:  $\times$ 200)



Immunohistochemistry of paraffin-embedded Human ovarian cancer tissue using [TA323072] (FOXO1 (Phospho-Ser256) Antibody) at dilution 1/25, treated with synthetic peptide. (Original magnification:  $\times 200$ )



Immunohistochemistry of paraffin-embedded Human thyroid cancer tissue using [TA323072] (FOXO1 (Phospho-Ser256) Antibody) at dilution 1/25 (Original magnification:  $\times 200$ )



Immunohistochemistry of paraffin-embedded Human thyroid cancer tissue using [TA323072] (FOXO1 (Phospho-Ser256) Antibody) at dilution 1/25, treated with synthetic peptide. (Original magnification:  $\times 200$ )