

## Product datasheet for **TA323070S**

### Fibronectin (FN1) Rabbit Polyclonal Antibody

#### Product data:

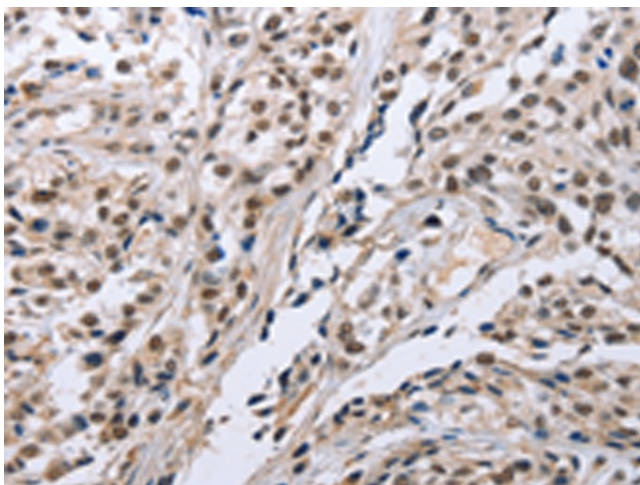
Product Type:	Primary Antibodies
Applications:	IHC
Recommended Dilution:	IHC: 25-100 Positive control: Human esophagus cancer Predicted cell location: Nucleus
Reactivity:	Human, Mouse, Rat
Host:	Rabbit
Isotype:	IgG
Clonality:	Polyclonal
Immunogen:	Fusion protein corresponding to a region derived from 32-280 amino acids of human fibronectin 1
Formulation:	PBS pH7.3, 0.05% NaN <sub>3</sub> , 50% glycerol
Purification:	Antigen affinity purification
Conjugation:	Unconjugated
Storage:	Store at -20°C as received.
Stability:	Stable for 12 months from date of receipt.
Gene Name:	fibronectin 1
Database Link:	<a href="#">NP_002017</a> <a href="#">Entrez Gene 14268 Mouse</a> <a href="#">Entrez Gene 25661 Rat</a> <a href="#">Entrez Gene 2335 Human</a> <a href="#">P02751</a>
Background:	This gene encodes fibronectin, a glycoprotein present in a soluble dimeric form in plasma, and in a dimeric or multimeric form at the cell surface and in extracellular matrix. Fibronectin is involved in cell adhesion and migration processes including embryogenesis, wound healing, blood coagulation, host defense, and metastasis. The gene has three regions subject to alternative splicing, with the potential to produce 20 different transcript variants. However, the full-length nature of some variants has not been determined.?
Synonyms:	CIG; ED-B; FINC; FN; FNZ; GFND; GFND2; LETS; MSF
Protein Families:	Druggable Genome, ES Cell Differentiation/IPS, Secreted Protein



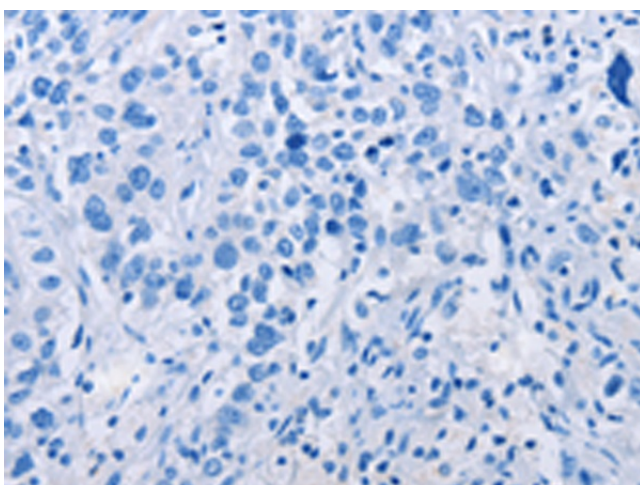
[View online »](#)

**Protein Pathways:** ECM-receptor interaction, Focal adhesion, Pathways in cancer, Regulation of actin cytoskeleton, Small cell lung cancer

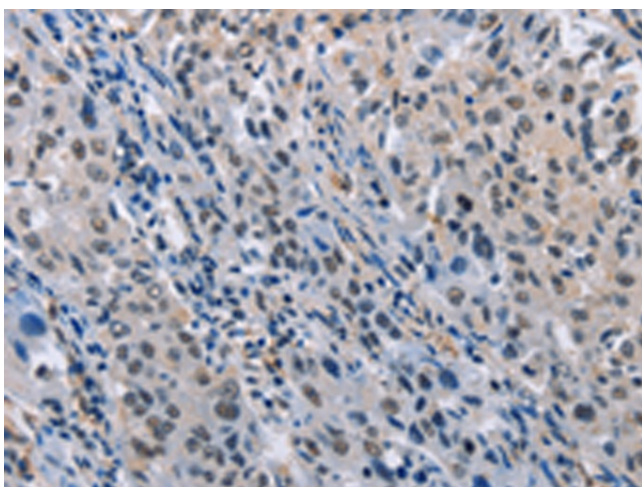
**Product images:**



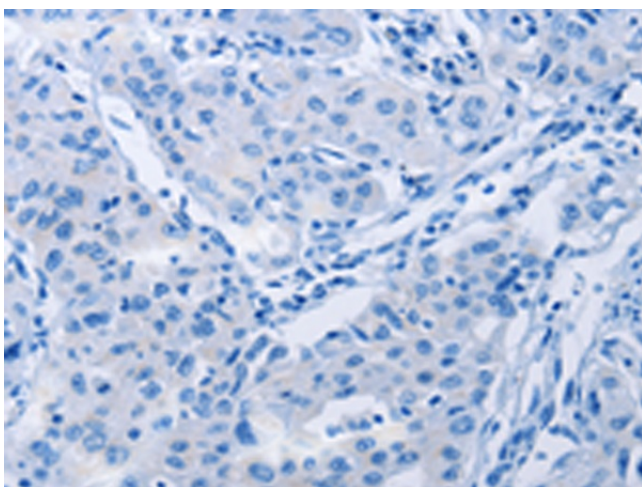
Immunohistochemistry of paraffin-embedded Human esophagus cancer tissue using [TA323070] (FN1 Antibody) at dilution 1/35 (Original magnification:  $\times 200$ )



Immunohistochemistry of paraffin-embedded Human esophagus cancer tissue using [TA323070] (FN1 Antibody) at dilution 1/35, treated with fusion protein. (Original magnification:  $\times 200$ )



Immunohistochemistry of paraffin-embedded Human lung cancer tissue using [TA323070] (FN1 Antibody) at dilution 1/35 (Original magnification: ×200)



Immunohistochemistry of paraffin-embedded Human lung cancer tissue using [TA323070] (FN1 Antibody) at dilution 1/35, treated with fusion protein. (Original magnification: ×200)