

Product datasheet for **TA323067**

GABRR1 Rabbit Polyclonal Antibody

Product data:

Product Type:	Primary Antibodies
Applications:	WB
Recommended Dilution:	WB: 500-2000 WB positive control: Mouse liver tissue
Reactivity:	Human, Mouse, Rat
Host:	Rabbit
Isotype:	IgG
Clonality:	Polyclonal
Immunogen:	Synthetic peptide corresponding to a region derived from 57-70 amino acids of Human gamma-aminobutyric acid (GABA) A receptor, rho 1
Formulation:	PBS pH7.3, 0.05% NaN ₃ , 50% glycerol
Concentration:	lot specific
Purification:	Antigen affinity purification
Conjugation:	Unconjugated
Storage:	Store at -20°C as received.
Stability:	Stable for 12 months from date of receipt.
Predicted Protein Size:	54 kDa
Gene Name:	gamma-aminobutyric acid type A receptor rho1 subunit
Database Link:	NP_002033 Entrez Gene 14408 Mouse Entrez Gene 29694 Rat Entrez Gene 2569 Human P24046
Background:	Gamma-aminobutyric acid receptor subunit rho-1 is a protein that in humans is encoded by the GABRR1 gene. GABA is the major inhibitory neurotransmitter in the mammalian brain where it acts at GABA receptors; which are ligand-gated chloride channels. GABRR1 is a member of the rho subunit family. Several transcript variants encoding different isoforms have been found for this gene.
Synonyms:	MGC163216

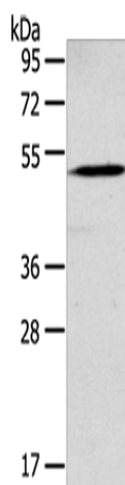


[View online »](#)

Protein Families: Druggable Genome, Ion Channels: Cys-loop Receptors, Transmembrane

Protein Pathways: Neuroactive ligand-receptor interaction

Product images:



Gel: 8%SDS-PAGE

Lysate: 40 μ g

Lane: Mouse liver tissue

Primary antibody: TA323067 (GABRR1 Antibody)
at dilution 1/200

Secondary antibody: Goat anti rabbit IgG at
1/8000 dilution

Exposure time: 2 minutes