

Product datasheet for **TA323065S**

GLP1 (GCG) Rabbit Polyclonal Antibody

Product data:

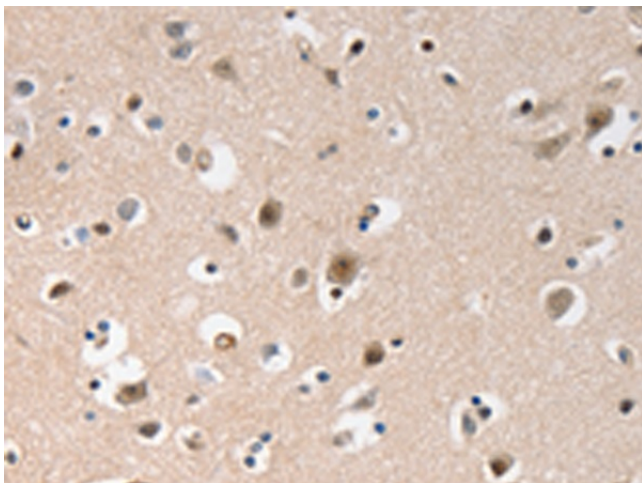
| | |
|-----------------------|---|
| Product Type: | Primary Antibodies |
| Applications: | IHC |
| Recommended Dilution: | IHC: 25-100 Positive control: Human brain Predicted cell location: cytoplasm, Nucleus |
| Reactivity: | Human, Mouse, Rat |
| Host: | Rabbit |
| Isotype: | IgG |
| Clonality: | Polyclonal |
| Immunogen: | Synthetic peptide corresponding to a region derived from 14-28 amino acids of human glucagon |
| Formulation: | PBS pH7.3, 0.05% NaN ₃ , 50% glycerol |
| Purification: | Antigen affinity purification |
| Conjugation: | Unconjugated |
| Storage: | Store at -20°C as received. |
| Stability: | Stable for 12 months from date of receipt. |
| Gene Name: | glucagon |
| Database Link: | NP_002045 Entrez Gene 14526 Mouse Entrez Gene 24952 Rat Entrez Gene 2641 Human P01275 |
| Background: | The protein encoded by this gene is actually a preproprotein that is cleaved into four distinct mature peptides. One of these; glucagon; is a pancreatic hormone that counteracts the glucose-lowering action of insulin by stimulating glycogenolysis and gluconeogenesis. Glucagon is a ligand for a specific G-protein linked receptor whose signalling pathway controls cell proliferation. Two of the other peptides are secreted from gut endocrine cells and promote nutrient absorption through distinct mechanisms. Finally; the fourth peptide is similar to glicentin; an active enteroglucagon. |
| Synonyms: | GLP1; GLP2; GRPP |



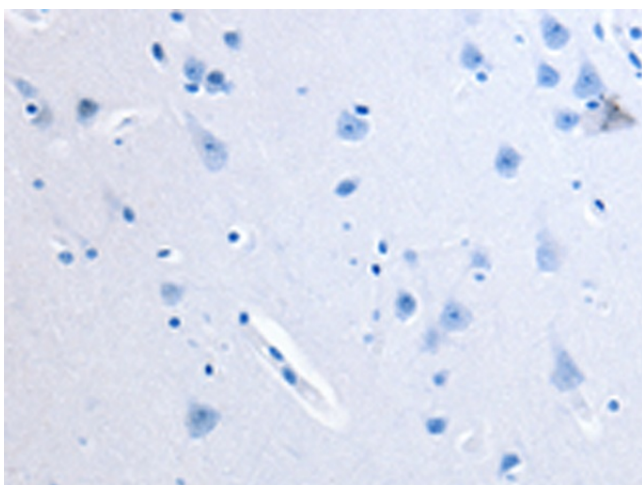
[View online »](#)

Protein Families: Druggable Genome, ES Cell Differentiation/IPS, Secreted Protein

Product images:



Immunohistochemistry of paraffin-embedded Human brain tissue using [TA323065] (GCG(GLP1) Antibody) at dilution 1/20 (Original magnification: ×200)



Immunohistochemistry of paraffin-embedded Human brain tissue using [TA323065] (GCG(GLP1) Antibody) at dilution 1/20, treated with synthetic peptide. (Original magnification: ×200)