

## Product datasheet for **TA323064S**

### GLP1 (GCG) Rabbit Polyclonal Antibody

#### Product data:

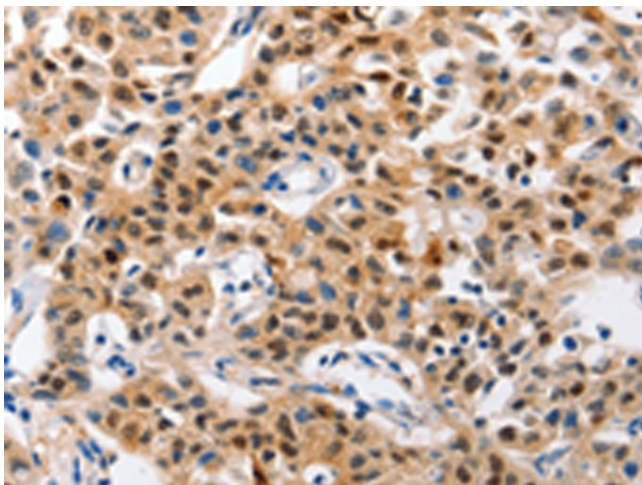
Product Type:	Primary Antibodies
Applications:	IHC
Recommended Dilution:	IHC: 25-100 Positive control: Human lung cancer Predicted cell location: cytoplasm, Nucleus
Reactivity:	Human, Mouse, Rat
Host:	Rabbit
Isotype:	IgG
Clonality:	Polyclonal
Immunogen:	Synthetic peptide corresponding to a region derived from 14-28 amino acids of human glucagon
Formulation:	PBS pH7.3, 0.05% NaN <sub>3</sub> , 50% glycerol
Purification:	Antigen affinity purification
Conjugation:	Unconjugated
Storage:	Store at -20°C as received.
Stability:	Stable for 12 months from date of receipt.
Gene Name:	glucagon
Database Link:	<a href="#">NP_002045</a> <a href="#">Entrez Gene 14526 Mouse</a> <a href="#">Entrez Gene 24952 Rat</a> <a href="#">Entrez Gene 2641 Human</a> <a href="#">P01275</a>
Background:	The protein encoded by this gene is actually a preproprotein that is cleaved into four distinct mature peptides. One of these; glucagon; is a pancreatic hormone that counteracts the glucose-lowering action of insulin by stimulating glycogenolysis and gluconeogenesis. Glucagon is a ligand for a specific G-protein linked receptor whose signalling pathway controls cell proliferation. Two of the other peptides are secreted from gut endocrine cells and promote nutrient absorption through distinct mechanisms. Finally; the fourth peptide is similar to glicentin; an active enteroglucagon.
Synonyms:	GLP1; GLP2; GRPP



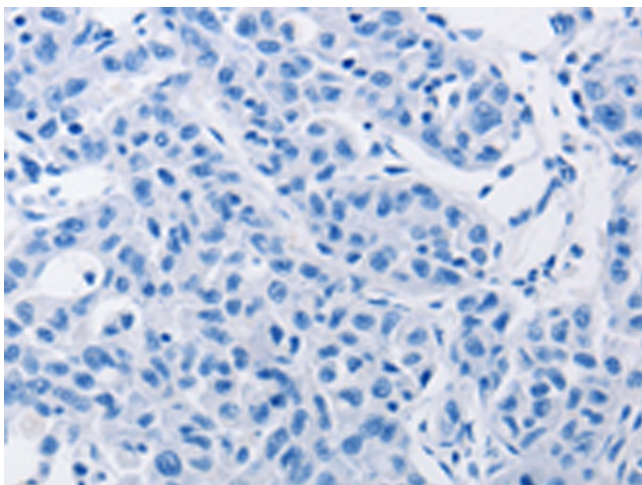
[View online »](#)

Protein Families: Druggable Genome, ES Cell Differentiation/IPS, Secreted Protein

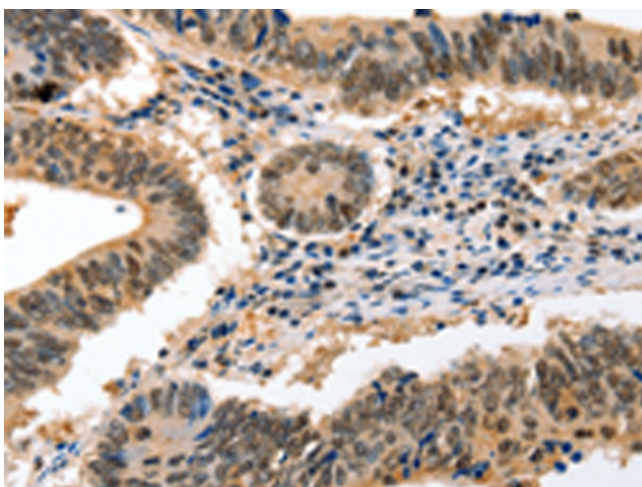
### Product images:



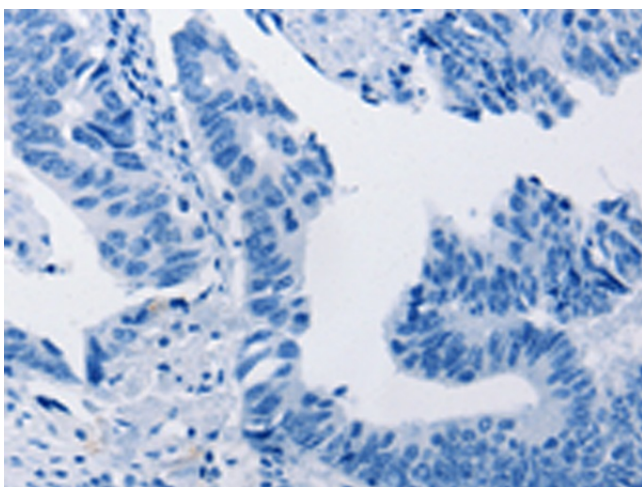
Immunohistochemistry of paraffin-embedded Human lung cancer tissue using [TA323064] (GCG(GLP1) Antibody) at dilution 1/30 (Original magnification:  $\times 200$ )



Immunohistochemistry of paraffin-embedded Human lung cancer tissue using [TA323064] (GCG(GLP1) Antibody) at dilution 1/30, treated with synthetic peptide. (Original magnification:  $\times 200$ )



Immunohistochemistry of paraffin-embedded Human colon cancer tissue using [TA323064] (GCG(GLP1) Antibody) at dilution 1/30 (Original magnification:  $\times 200$ )



Immunohistochemistry of paraffin-embedded Human colon cancer tissue using [TA323064] (GCG(GLP1) Antibody) at dilution 1/30, treated with synthetic peptide. (Original magnification:  $\times 200$ )