

## Product datasheet for **TA323060**

### **GSK3 beta (GSK3B) Rabbit Polyclonal Antibody**

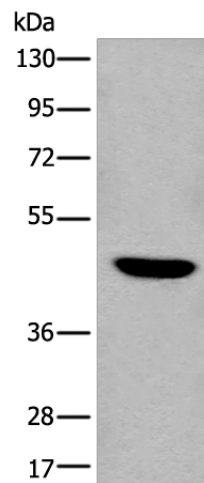
#### **Product data:**

Product Type:	Primary Antibodies
Applications:	IHC, WB
Recommended Dilution:	WB: 500-2000 WB positive control: A549 cell lysate IHC: 25-100 Positive control: Human colorectal cancer Predicted cell location: Cytoplasm or Nucleus
Reactivity:	Human, Mouse, Rat
Host:	Rabbit
Isotype:	IgG
Clonality:	Polyclonal
Immunogen:	Synthetic peptide corresponding to a region derived from 396-408 amino acids of Human glycogen synthase kinase 3 beta
Formulation:	PBS pH7.3, 0.05% NaN <sub>3</sub> , 50% glycerol
Concentration:	lot specific
Purification:	Antigen affinity purification
Conjugation:	Unconjugated
Storage:	Store at -20°C as received.
Stability:	Stable for 12 months from date of receipt.
Predicted Protein Size:	48 kDa
Gene Name:	glycogen synthase kinase 3 beta
Database Link:	<a href="#">NP_002084</a> <a href="#">Entrez Gene 56637 Mouse</a> <a href="#">Entrez Gene 84027 Rat</a> <a href="#">Entrez Gene 2932 Human</a> <a href="#">P49841</a>

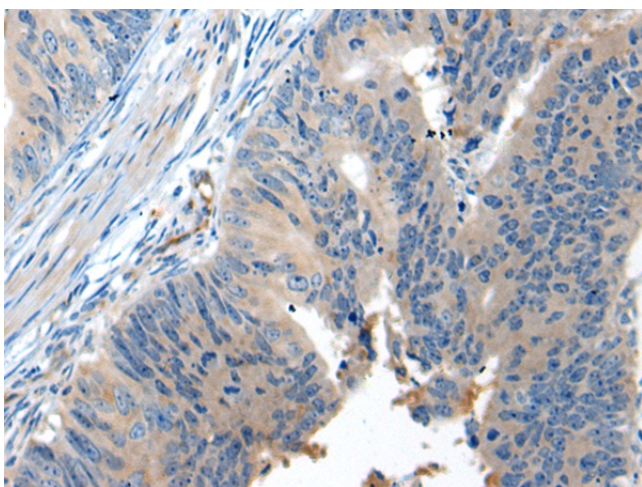


[View online »](#)

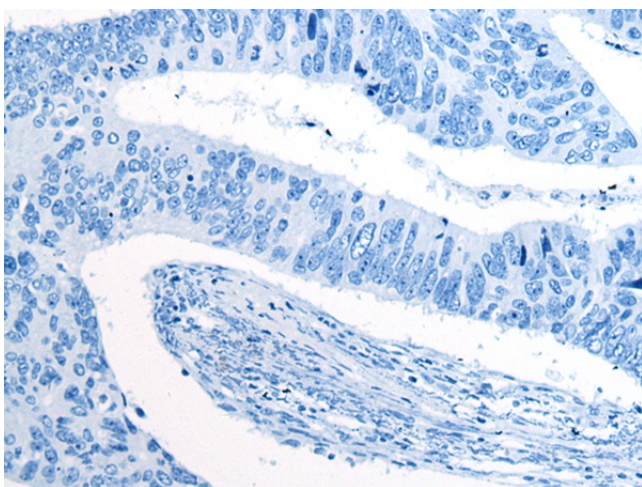
<b>Background:</b>	The protein encoded by this gene is a serine-threonine kinase; belonging to the glycogen synthase kinase subfamily. It is involved in energy metabolism; neuronal cell development; and body pattern formation. Polymorphisms in this gene have been implicated in modifying risk of Parkinson disease; and studies in mice show that overexpression of this gene may be relevant to the pathogenesis of Alzheimer disease. Alternatively spliced transcript variants encoding different isoforms have been found for this gene.
<b>Synonyms:</b>	glycogen synthase kinase-3 beta; glycogen synthase kinase 3 beta; GSK3beta isoform
<b>Protein Families:</b>	Druggable Genome, Protein Kinase
<b>Protein Pathways:</b>	Alzheimer's disease, Axon guidance, Basal cell carcinoma, B cell receptor signaling pathway, Cell cycle, Chemokine signaling pathway, Colorectal cancer, Endometrial cancer, ErbB signaling pathway, Focal adhesion, Hedgehog signaling pathway, Insulin signaling pathway, Melanogenesis, Neurotrophin signaling pathway, Pathways in cancer, Prostate cancer, T cell receptor signaling pathway, Wnt signaling pathway

**Product images:**

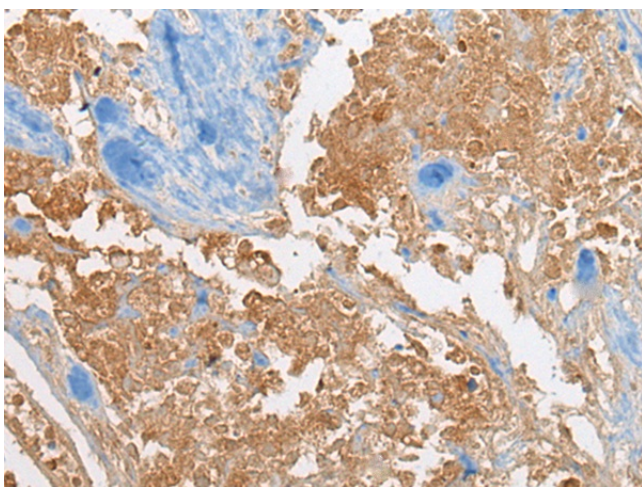
Gel: 8%SDS-PAGE  
Lysate: 40 µg  
Lane: A549 cell lysate  
Primary antibody: TA323060 (GSK3B Antibody) at dilution 1/300  
Secondary antibody: Goat anti rabbit IgG at 1/8000 dilution  
Exposure time: 40 seconds



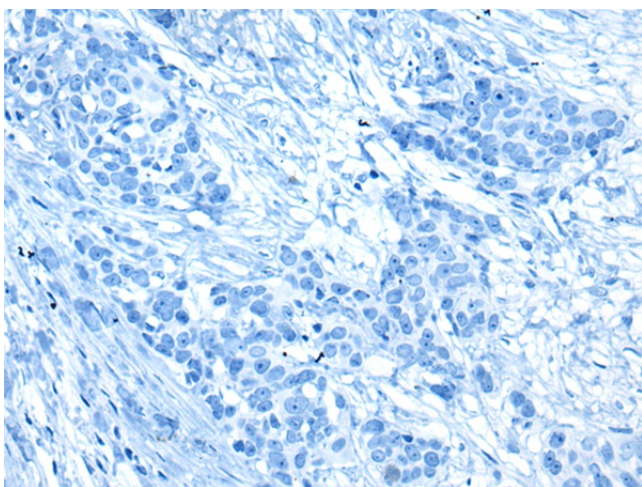
Immunohistochemistry of paraffin-embedded Human colorectal cancer tissue using TA323060 (GSK3B Antibody) at dilution 1/25 (Original magnification:  $\times 200$ )



Immunohistochemistry of paraffin-embedded Human colorectal cancer tissue using TA323060 (GSK3B Antibody) at dilution 1/25, treated with synthetic peptide. (Original magnification:  $\times 200$ )



Immunohistochemistry of paraffin-embedded Human thyroid cancer tissue using TA323060 (GSK3B Antibody) at dilution 1/25 (Original magnification:  $\times 200$ )



Immunohistochemistry of paraffin-embedded Human thyroid cancer tissue using TA323060 (GSK3B Antibody) at dilution 1/25, treated with synthetic peptide. (Original magnification: ×200)