

## Product datasheet for **TA323059**

### Glycophorin A (GYPA) Rabbit Polyclonal Antibody

#### Product data:

|                         |  |
|-------------------------|--|
| Product Type:           | Primary Antibodies   |
| Applications:           | WB   |
| Recommended Dilution:   | ELISA: 1:1000-2000, WB: 1:200-1000   |
| Reactivity:             | Human  |
| Host:                   | Rabbit   |
| Isotype:                | IgG  |
| Clonality:              | Polyclonal   |
| Immunogen:              | Synthetic peptide (KLH-coupled) derived from human GYPA                    |
| Formulation:            | PBS pH7.3, 0.05% NaN <sub>3</sub> , 50% glycerol                           |
| Concentration:          | lot specific   |
| Purification:           | Antigen affinity purification  |
| Conjugation:            | Unconjugated   |
| Storage:                | Store at -20°C as received.  |
| Stability:              | Stable for 12 months from date of receipt.                                 |
| Predicted Protein Size: | 16 kDa   |
| Gene Name:              | glycophorin A (MNS blood group)  |
| Database Link:          | <a href="#">NP_002090</a><br><a href="#">Entrez Gene 2993 Human P02724</a> |

**Background:** Glycophorins A (GYPA) and B (GYPB) are major sialoglycoproteins of the human erythrocyte membrane which bear the antigenic determinants for the MN and Ss blood groups. In addition to the M or N and S or s antigens that commonly occur in all populations, about 40 related variant phenotypes have been identified. These variants include all the variants of the Miltenberger complex and several isoforms of Sta, as well as Dantu, Sat, He, Mg, and deletion variants Ena, S-s-U- and Mk. Most of the variants are the result of gene recombinations between GYPA and GYPB.

**Synonyms:** CD235a; GPA; GPERik; GPSAT; HGpMiV; HGpMiXI; HGpSta(C); MN; MNS; PAS-2

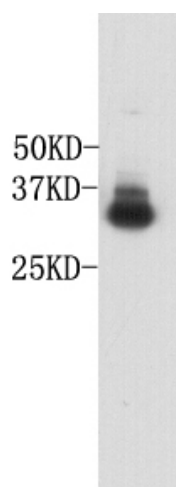


[View online »](#)

Protein Families: ES Cell Differentiation/IPS, Transmembrane

Protein Pathways: Hematopoietic cell lineage

### Product images:



Predicted band size: 16 kDa. Positive control: Human liver tissue lysate. Recommended dilution: 1/ 200-1000. (Gel: 12%SDS-PAGE Lysate: 30 ug Primary antibody: 1/500 dilution Secondary antibody: Goat anti Rabbit IgG - H&L (HRP) at 1/10000 dilution Exposure time: 1 minute)