

## Product datasheet for **TA323058**

### CFHL1 (CFHR1) Rabbit Polyclonal Antibody

#### Product data:

Product Type:	Primary Antibodies
Applications:	IHC, WB
Recommended Dilution:	WB: 500-2000 WB positive control: Human liver cancer tissue IHC: 50-200 Positive control: Human brain Predicted cell location: Cytoplasm
Reactivity:	Human
Host:	Rabbit
Isotype:	IgG
Clonality:	Polyclonal
Immunogen:	Fusion protein corresponding to a region derived from 22-330 amino acids of human complement factor H-related 1
Formulation:	PBS pH7.3, 0.05% NaN <sub>3</sub> , 50% glycerol
Concentration:	lot specific
Purification:	Antigen affinity purification
Conjugation:	Unconjugated
Storage:	Store at -20°C as received.
Stability:	Stable for 12 months from date of receipt.
Predicted Protein Size:	38 kDa
Gene Name:	complement factor H related 1
Database Link:	<a href="#">NP_002104</a> <a href="#">Entrez Gene 3078 Human</a> <a href="#">Q03591</a>



[View online »](#)

**Background:**

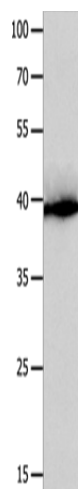
This gene encodes a secreted protein belonging to the complement factor H protein family. It binds to *Pseudomonas aeruginosa* elongation factor Tuf together with plasminogen, which is proteolytically activated. It is proposed that Tuf acts as a virulence factor by acquiring host proteins to the pathogen surface, controlling complement, and facilitating tissue invasion. Mutations in this gene are associated with an increased risk of atypical hemolytic-uremic syndrome.?

**Synonyms:**

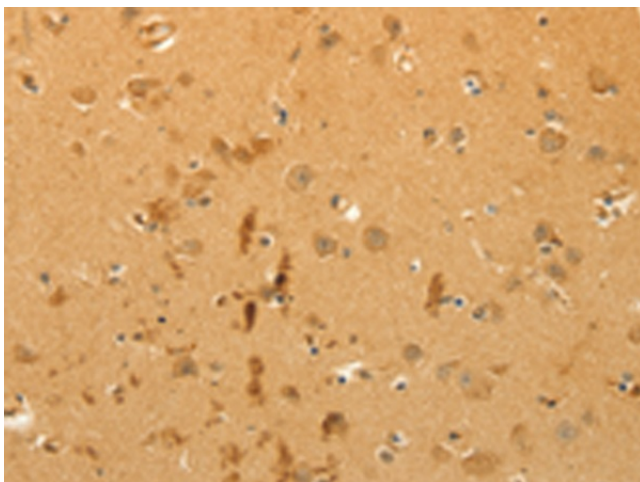
CFHL; CFHL1; CFHL1P; CFHR1P; FHR1; H36-1; H36-2; HFL1; HFL2

**Protein Families:**

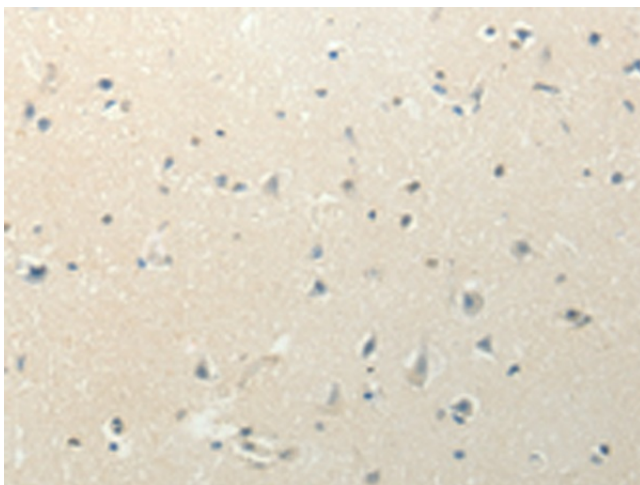
Secreted Protein

**Product images:**

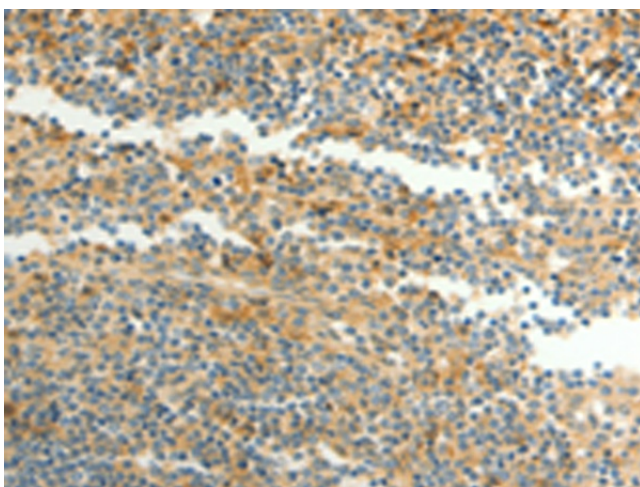
Gel: 10%SDS-PAGE  
Lysate: 40  $\mu$ g  
Lane: Human liver cancer tissue  
Primary antibody: TA323058 (CFHR1 Antibody) at dilution 1/300  
Secondary antibody: Goat anti rabbit IgG at 1/8000 dilution  
Exposure time: 30 seconds



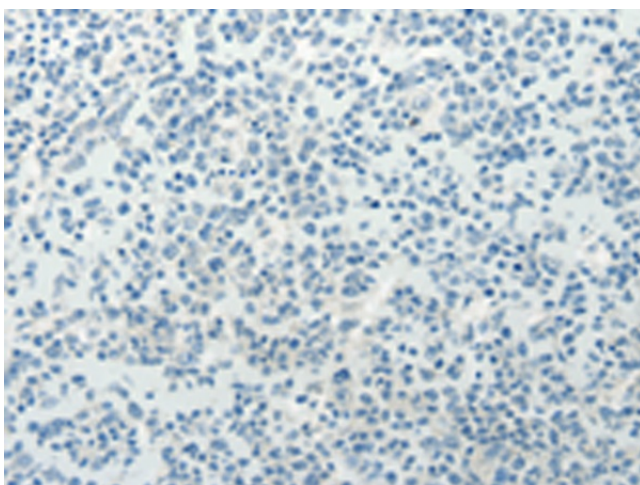
Immunohistochemistry of paraffin-embedded Human brain tissue using TA323058 (CFHR1 Antibody) at dilution 1/40 (Original magnification:  $\times$ 200)



Immunohistochemistry of paraffin-embedded Human brain tissue using TA323058 (CFHR1 Antibody) at dilution 1/40, treated with fusion protein. (Original magnification: x200)



Immunohistochemistry of paraffin-embedded Human tonsil tissue using TA323058 (CFHR1 Antibody) at dilution 1/40 (Original magnification: x200)



Immunohistochemistry of paraffin-embedded Human tonsil tissue using TA323058 (CFHR1 Antibody) at dilution 1/40, treated with fusion protein. (Original magnification: x200)