

Product datasheet for **TA323057**

CFHL1 (CFHR1) Rabbit Polyclonal Antibody

Product data:

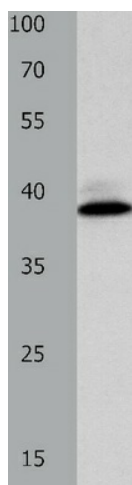
| | |
|-------------------------|---|
| Product Type: | Primary Antibodies |
| Applications: | IHC, WB |
| Recommended Dilution: | ELISA: 1:2000-5000, WB: 1:500-2000, IHC: 1:50-200 |
| Reactivity: | Human, Mouse, Rat |
| Host: | Rabbit |
| Isotype: | IgG |
| Clonality: | Polyclonal |
| Immunogen: | Fusion protein corresponding to a region derived from 22-330 amino acids of human complement factor H-related 1 |
| Formulation: | PBS pH7.3, 0.05% NaN ₃ , 50% glycerol |
| Concentration: | lot specific |
| Purification: | Antigen affinity purification |
| Conjugation: | Unconjugated |
| Storage: | Store at -20°C as received. |
| Stability: | Stable for 12 months from date of receipt. |
| Predicted Protein Size: | 38 kDa |
| Gene Name: | complement factor H related 1 |
| Database Link: | NP_002104 Entrez Gene 50702 MouseEntrez Gene 289057 RatEntrez Gene 3078 Human Q03591 |
| Background: | This gene encodes a secreted protein belonging to the complement factor H protein family. It binds to Pseudomonas aeruginosa elongation factor Tuf together with plasminogen; which is proteolytically activated. It is proposed that Tuf acts as a virulence factor by acquiring host proteins to the pathogen surface; controlling complement; and facilitating tissue invasion. Mutations in this gene are associated with an increased risk of atypical hemolytic-uremic syndrome.? |
| Synonyms: | CFHL; CFHL1; CFHL1P; CFHR1P; FHR1; H36-1; H36-2; HFL1; HFL2 |



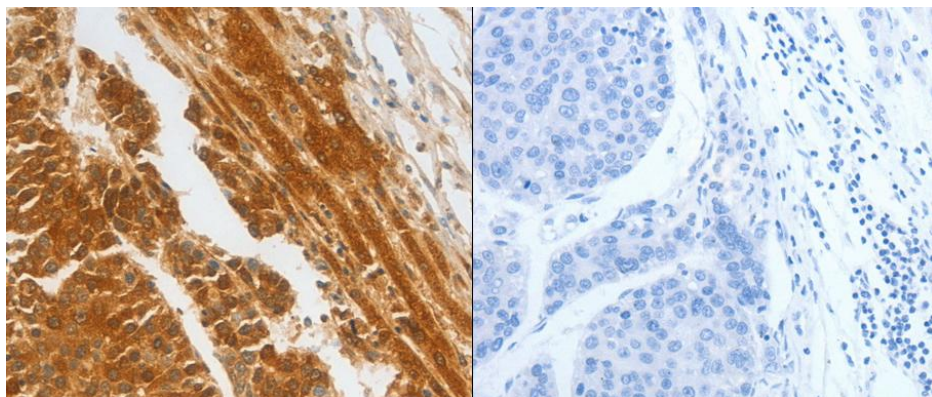
[View online »](#)

Protein Families: Secreted Protein

Product images:



Predicted band size: 38 kDa. Positive control: Human liver cancer tissue lysate. Recommended dilution: 1/500-2000. (Gel: 10%SDS-PAGE Lysate: 40 ug Primary antibody: 1/500 dilution Secondary antibody: Goat anti Rabbit IgG - H&L (HRP) at 1/10000 dilution Exposure time: 30 seconds)



Predicted cell location: Cytoplasm. Positive control: Human liver cancer tissue. Recommended dilution: 1/50-200 The image on the left is immunohistochemistry of paraffin-embedded Human liver cancer tissue using CFHR1 antibody at dilution 1/30, on the right is treated with the fusion protein. (Original magnification: x200)