

Product datasheet for **TA323053**

HMGB2 Rabbit Polyclonal Antibody

Product data:

Product Type:	Primary Antibodies
Applications:	WB
Recommended Dilution:	WB: 2000-5000 WB positive control: Hela and 231 cells
Reactivity:	Human, Mouse, Rat
Host:	Rabbit
Isotype:	IgG
Clonality:	Polyclonal
Immunogen:	Synthetic peptide corresponding to a region derived from 166-180 amino acids of Human high mobility group box 2
Formulation:	PBS pH7.3, 0.05% NaN ₃ , 50% glycerol
Concentration:	lot specific
Purification:	Antigen affinity purification
Conjugation:	Unconjugated
Storage:	Store at -20°C as received.
Stability:	Stable for 12 months from date of receipt.
Predicted Protein Size:	24 kDa
Gene Name:	high mobility group box 2
Database Link:	NP_002120 Entrez Gene 29395 Rat Entrez Gene 97165 Mouse Entrez Gene 3148 Human P26583

Background: This gene encodes a member of the non-histone chromosomal high mobility group protein family. The proteins of this family are chromatin-associated and ubiquitously distributed in the nucleus of higher eukaryotic cells. In vitro studies have demonstrated that this protein is able to efficiently bend DNA and form DNA circles. These studies suggest a role in facilitating cooperative interactions between cis-acting proteins by promoting DNA flexibility. This protein was also reported to be involved in the final ligation step in DNA end-joining processes of DNA double-strand breaks repair and V(D)J recombination.

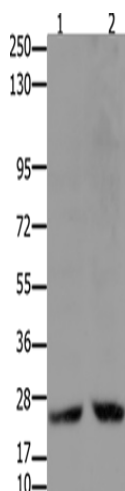


[View online »](#)

Synonyms: HMG2

Protein Families: Druggable Genome, Transcription Factors

Product images:



Gel: 10%SDS-PAGE

Lysate: 30 μ g

Lane 1-2: HeLa cells

231 cells

Primary antibody: TA323053 (HMGB2 Antibody)
at dilution 1/2000

Secondary antibody: Goat anti rabbit IgG at
1/8000 dilution

Exposure time: 50 seconds