

## Product datasheet for **TA323052**

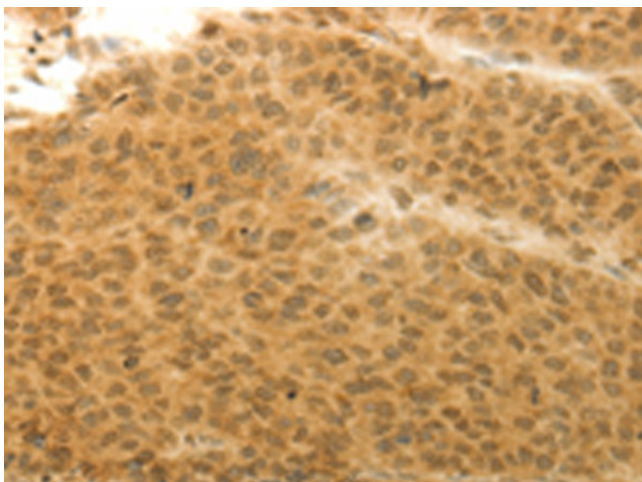
### HOXA4 Rabbit Polyclonal Antibody

#### Product data:

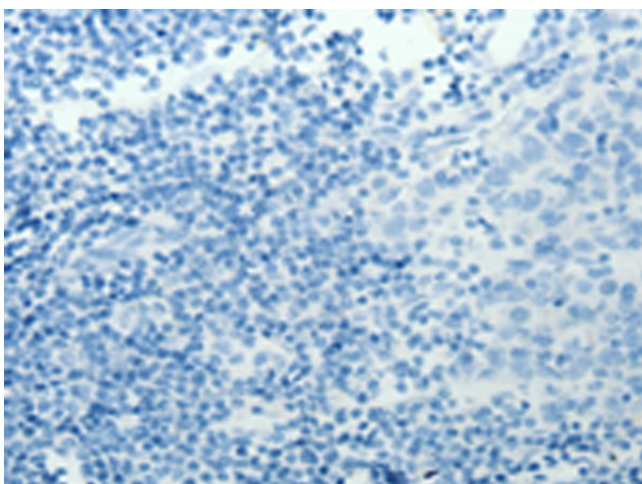
Product Type:	Primary Antibodies
Applications:	IHC
Recommended Dilution:	IHC: 25-100 Positive control: Human liver cancer Predicted cell location: Cytoplasm, Nucleus
Reactivity:	Human
Host:	Rabbit
Isotype:	IgG
Clonality:	Polyclonal
Immunogen:	Synthetic peptide corresponding to a region derived from 113-126 amino acids of human homeobox A4
Formulation:	PBS pH7.3, 0.05% NaN <sub>3</sub> , 50% glycerol
Concentration:	lot specific
Purification:	Antigen affinity purification
Conjugation:	Unconjugated
Storage:	Store at -20°C as received.
Stability:	Stable for 12 months from date of receipt.
Gene Name:	homeobox A4
Database Link:	<a href="#">NP_002132</a> <a href="#">Entrez Gene 3201 Human</a> <a href="#">Q00056</a>
Background:	In vertebrates; the genes encoding the class of transcription factors called homeobox genes are found in clusters named A; B; C; and D on four separate chromosomes. Expression of these proteins is spatially and temporally regulated during embryonic development. This gene is part of the A cluster on chromosome 7 and encodes a DNA-binding transcription factor which may regulate gene expression; morphogenesis; and differentiation
Synonyms:	HOX1; HOX1D
Protein Families:	Transcription Factors



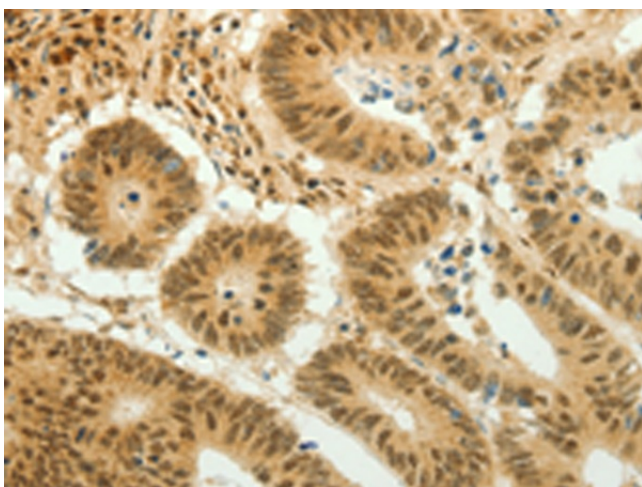
[View online »](#)

**Product images:**

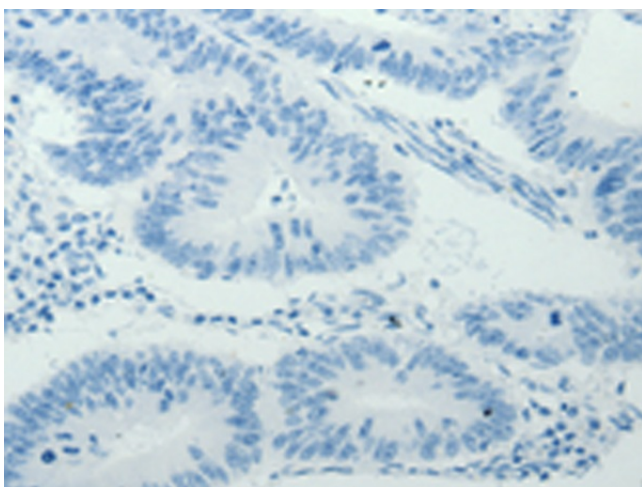
Immunohistochemistry of paraffin-embedded Human liver cancer tissue using TA323052 (HOXA4 Antibody) at dilution 1/20 (Original magnification:  $\times 200$ )



Immunohistochemistry of paraffin-embedded Human liver cancer tissue using TA323052 (HOXA4 Antibody) at dilution 1/20, treated with synthetic peptide. (Original magnification:  $\times 200$ )



Immunohistochemistry of paraffin-embedded Human colon cancer tissue using TA323052 (HOXA4 Antibody) at dilution 1/20 (Original magnification:  $\times 200$ )



Immunohistochemistry of paraffin-embedded Human colon cancer tissue using TA323052 (HOXA4 Antibody) at dilution 1/20, treated with synthetic peptide. (Original magnification:  $\times 200$ )