

## Product datasheet for **TA323049S**

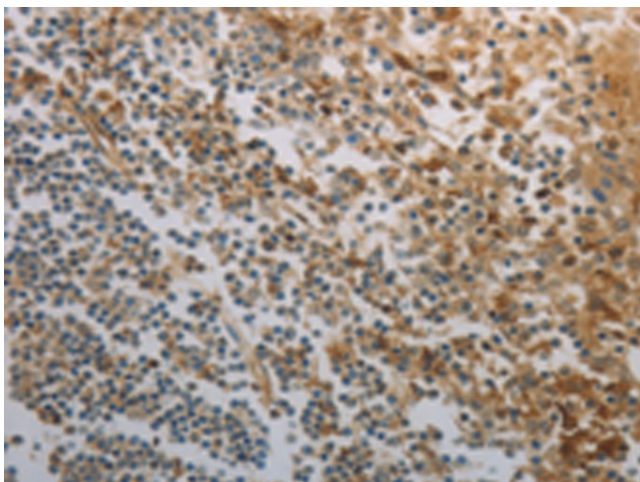
### Inhibin alpha (INHA) Rabbit Polyclonal Antibody

#### Product data:

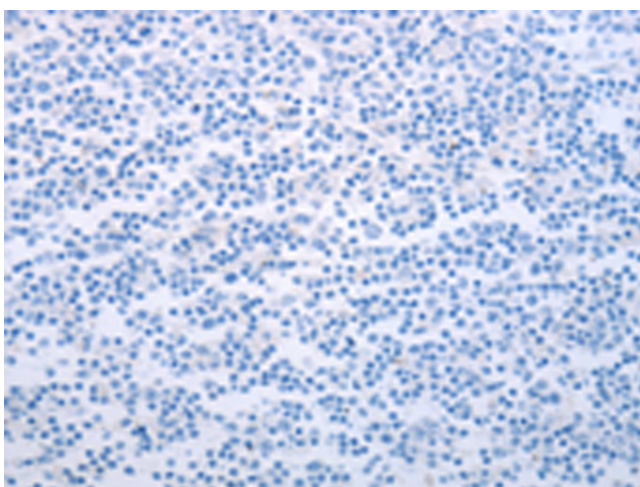
Product Type:	Primary Antibodies
Applications:	IHC
Recommended Dilution:	IHC: 150-500 Positive control: Human tonsil Predicted cell location: Cytoplasm
Reactivity:	Human, Mouse, Rat
Host:	Rabbit
Isotype:	IgG
Clonality:	Polyclonal
Immunogen:	Fusion protein corresponding to a region derived from 233-366 amino acids of human inhibin, alpha
Formulation:	PBS pH7.3, 0.05% NaN <sub>3</sub> , 50% glycerol
Purification:	Antigen affinity purification
Conjugation:	Unconjugated
Storage:	Store at -20°C as received.
Stability:	Stable for 12 months from date of receipt.
Gene Name:	inhibin alpha subunit
Database Link:	<a href="#">NP_002182</a> <a href="#">Entrez Gene 16322 Mouse</a> <a href="#">Entrez Gene 24504 Rat</a> <a href="#">Entrez Gene 3623 Human</a> <a href="#">P05111</a>
Background:	This gene encodes the alpha subunit of inhibins A and B protein complexes. These complexes negatively regulate follicle stimulating hormone secretion from the pituitary gland. Inhibins have also been implicated in regulating numerous cellular processes including cell proliferation; apoptosis; immune response and hormone secretion.
Synonyms:	A-inhibin subunit; alpha; inhibin; inhibin alpha subunit
Protein Families:	Druggable Genome, Secreted Protein



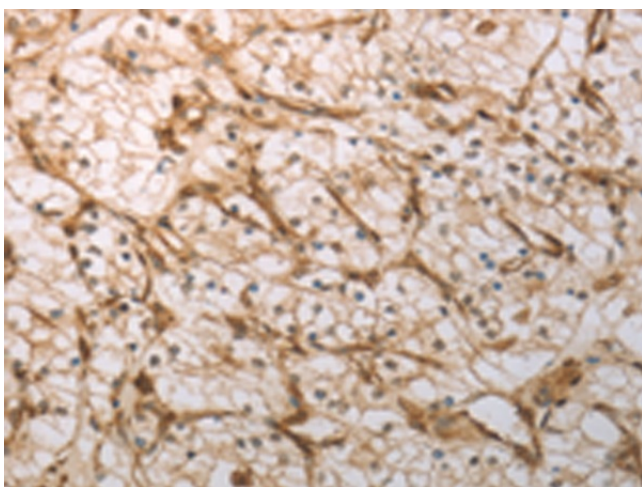
[View online »](#)

**Product images:**

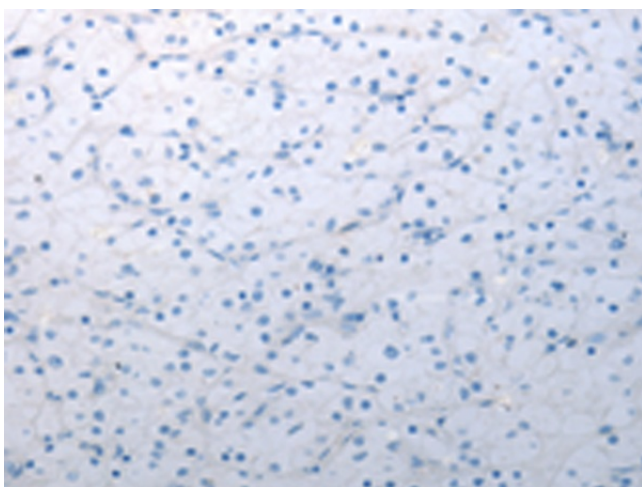
Immunohistochemistry of paraffin-embedded Human tonsil tissue using [TA323049] (INHA Antibody) at dilution 1/150 (Original magnification:  $\times 200$ )



Immunohistochemistry of paraffin-embedded Human tonsil tissue using [TA323049] (INHA Antibody) at dilution 1/150, treated with fusion protein. (Original magnification:  $\times 200$ )



Immunohistochemistry of paraffin-embedded Human renal cancer tissue using [TA323049] (INHA Antibody) at dilution 1/150 (Original magnification:  $\times 200$ )



Immunohistochemistry of paraffin-embedded Human renal cancer tissue using [TA323049] (INHA Antibody) at dilution 1/150, treated with fusion protein. (Original magnification:  $\times 200$ )