

Product datasheet for **TA323047S**

IRF1 Rabbit Polyclonal Antibody

Product data:

Product Type:	Primary Antibodies
Applications:	IHC, WB
Recommended Dilution:	WB: 500-2000 WB positive control: NIH/3T3 and Jurkat cells IHC: 50-200 Positive control: Human liver cancer Predicted cell location: Cytoplasm
Reactivity:	Human, Mouse, Rat
Host:	Rabbit
Isotype:	IgG
Clonality:	Polyclonal
Immunogen:	Synthetic peptide peptide corresponding to a region derived from 220-233 amino acids of human interferon regulatory factor 1
Formulation:	PBS pH7.3, 0.05% NaN ₃ , 50% glycerol
Purification:	Antigen affinity purification
Conjugation:	Unconjugated
Storage:	Store at -20°C as received.
Stability:	Stable for 12 months from date of receipt.
Predicted Protein Size:	37 kDa
Gene Name:	interferon regulatory factor 1
Database Link:	NP_002189 Entrez Gene 16362 Mouse Entrez Gene 24508 Rat Entrez Gene 3659 Human P10914



[View online »](#)

Background:

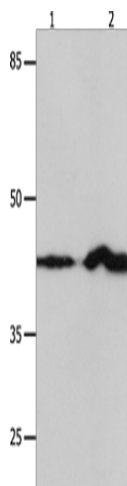
IRF1 encodes interferon regulatory factor 1; a member of the interferon regulatory transcription factor (IRF) family. IRF1 serves as an activator of interferons alpha and beta transcription; and in mouse it has been shown to be required for double-stranded RNA induction of these genes. IRF1 also functions as a transcription activator of genes induced by interferons alpha; beta; and gamma. Further; IRF1 has been shown to play roles in regulating apoptosis and tumor-suppression.

Synonyms:

IRF-1; MAR

Protein Families:

Druggable Genome, Transcription Factors

Product images:

Gel: 12%SDS-PAGE

Lysate: 30 μ g

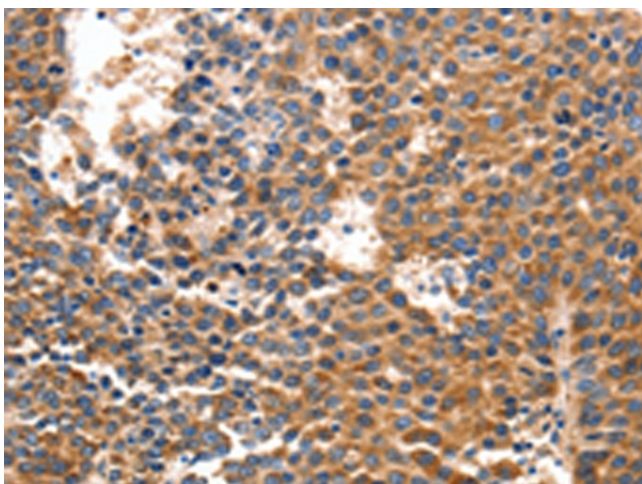
Lane 1-2: NIH/3T3 cells

Jurkat cells

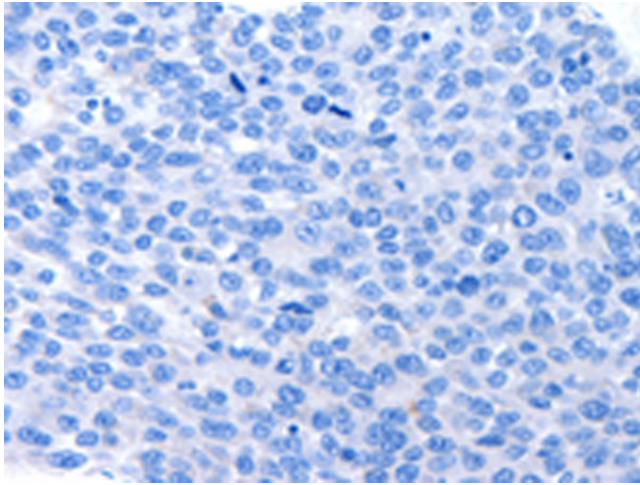
Primary antibody: [TA323047] (IRF1 Antibody) at dilution 1/750

Secondary antibody: Goat anti rabbit IgG at 1/8000 dilution

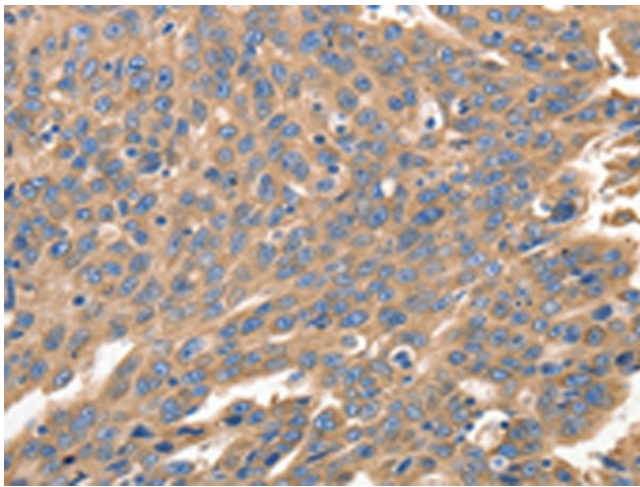
Exposure time: 1 minute



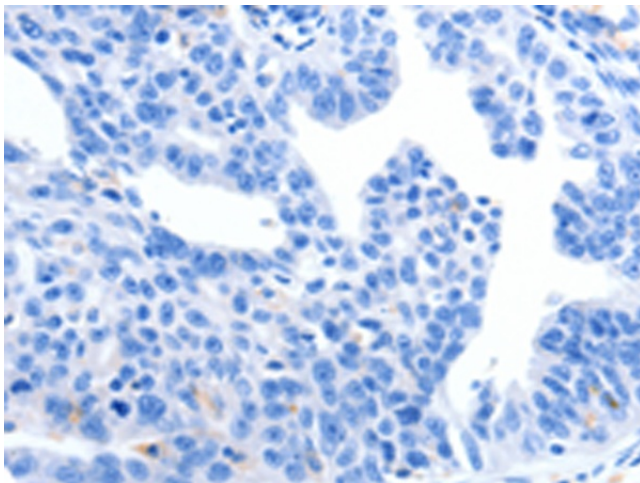
Immunohistochemistry of paraffin-embedded Human liver cancer tissue using [TA323047] (IRF1 Antibody) at dilution 1/40 (Original magnification: \times 200)



Immunohistochemistry of paraffin-embedded Human liver cancer tissue using [TA323047] (IRF1 Antibody) at dilution 1/40, treated with synthetic peptide. (Original magnification: x200)



Immunohistochemistry of paraffin-embedded Human ovarian cancer tissue using [TA323047] (IRF1 Antibody) at dilution 1/40 (Original magnification: x200)



Immunohistochemistry of paraffin-embedded Human ovarian cancer tissue using [TA323047] (IRF1 Antibody) at dilution 1/40, treated with synthetic peptide. (Original magnification: x200)