

## Product datasheet for **TA323047**

### IRF1 Rabbit Polyclonal Antibody

#### Product data:

Product Type:	Primary Antibodies
Applications:	IHC, WB
Recommended Dilution:	WB: 500-2000 WB positive control: NIH/3T3 and Jurkat cells IHC: 50-200 Positive control: Human liver cancer Predicted cell location: Cytoplasm
Reactivity:	Human, Mouse, Rat
Host:	Rabbit
Isotype:	IgG
Clonality:	Polyclonal
Immunogen:	Synthetic peptide peptide corresponding to a region derived from 220-233 amino acids of human interferon regulatory factor 1
Formulation:	PBS pH7.3, 0.05% NaN <sub>3</sub> , 50% glycerol
Concentration:	lot specific
Purification:	Antigen affinity purification
Conjugation:	Unconjugated
Storage:	Store at -20°C as received.
Stability:	Stable for 12 months from date of receipt.
Predicted Protein Size:	37 kDa
Gene Name:	interferon regulatory factor 1
Database Link:	<a href="#">NP_002189</a> <a href="#">Entrez Gene 16362 Mouse</a> <a href="#">Entrez Gene 24508 Rat</a> <a href="#">Entrez Gene 3659 Human</a> <a href="#">P10914</a>



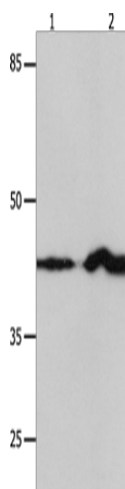
[View online »](#)

**Background:** IRF1 encodes interferon regulatory factor 1; a member of the interferon regulatory transcription factor (IRF) family. IRF1 serves as an activator of interferons alpha and beta transcription; and in mouse it has been shown to be required for double-stranded RNA induction of these genes. IRF1 also functions as a transcription activator of genes induced by interferons alpha; beta; and gamma. Further; IRF1 has been shown to play roles in regulating apoptosis and tumor-suppression.

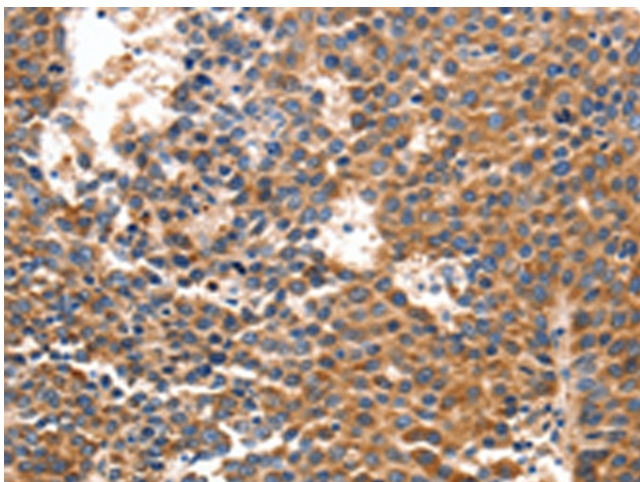
**Synonyms:** IRF-1; MAR

**Protein Families:** Druggable Genome, Transcription Factors

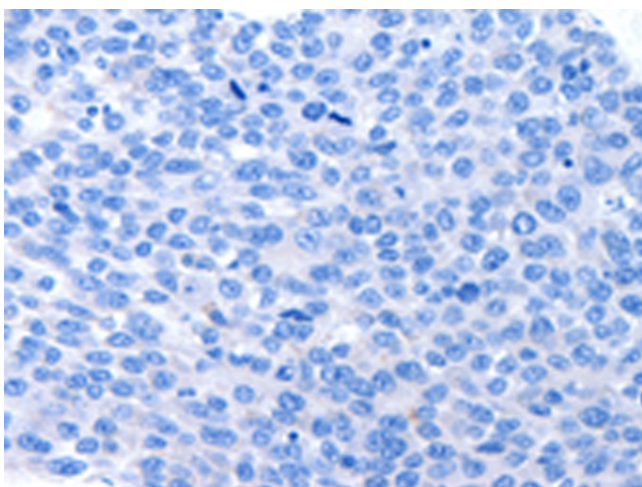
### Product images:



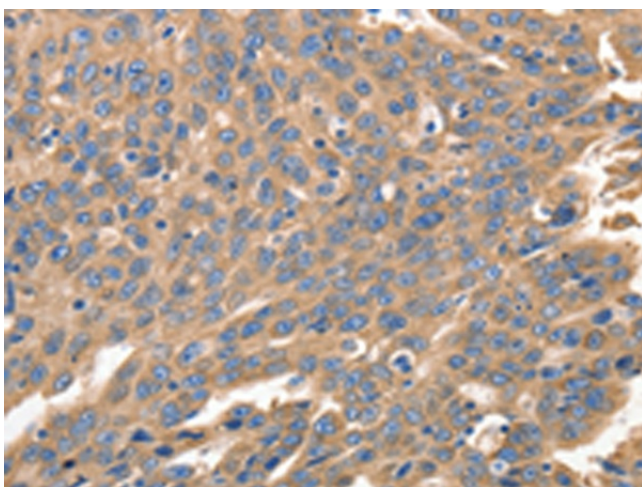
Gel: 12%SDS-PAGE  
Lysate: 30 µg  
Lane 1-2: NIH/3T3 cells  
Jurkat cells  
Primary antibody: TA323047 (IRF1 Antibody) at dilution 1/750  
Secondary antibody: Goat anti rabbit IgG at 1/8000 dilution  
Exposure time: 1 minute



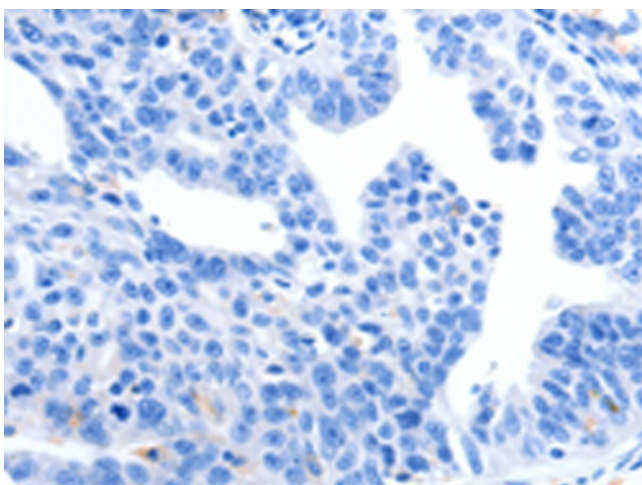
Immunohistochemistry of paraffin-embedded Human liver cancer tissue using TA323047 (IRF1 Antibody) at dilution 1/40 (Original magnification: ×200)



Immunohistochemistry of paraffin-embedded Human liver cancer tissue using TA323047 (IRF1 Antibody) at dilution 1/40, treated with synthetic peptide. (Original magnification: ×200)



Immunohistochemistry of paraffin-embedded Human ovarian cancer tissue using TA323047 (IRF1 Antibody) at dilution 1/40 (Original magnification: ×200)



Immunohistochemistry of paraffin-embedded Human ovarian cancer tissue using TA323047 (IRF1 Antibody) at dilution 1/40, treated with synthetic peptide. (Original magnification: ×200)