

Product datasheet for **TA323042**

KRT31 Rabbit Polyclonal Antibody

Product data:

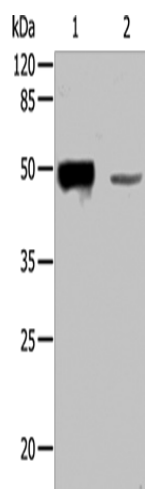
Product Type:	Primary Antibodies
Applications:	IHC, WB
Recommended Dilution:	WB: 200-1000 WB positive control: Human normal liver tissue IHC: 25-100 Positive control: Human ovarian cancer Predicted cell location: Cytoplasm
Reactivity:	Human, Mouse
Host:	Rabbit
Isotype:	IgG
Clonality:	Polyclonal
Immunogen:	Fusion protein corresponding to a region derived from 100-400 amino acids of Human Keratin-31
Formulation:	PBS pH7.3, 0.05% NaN ₃ , 50% glycerol
Concentration:	lot specific
Purification:	Antigen affinity purification
Conjugation:	Unconjugated
Storage:	Store at -20°C as received.
Stability:	Stable for 12 months from date of receipt.
Predicted Protein Size:	47 kDa
Gene Name:	keratin 31
Database Link:	NP_002268 Entrez Gene 16660 Mouse Entrez Gene 3881 Human Q15323
Background:	The protein encoded by this gene is a member of the keratin gene family. As a type I hair keratin; it is an acidic protein which heterodimerizes with type II keratins to form hair and nails. The type I hair keratins are clustered in a region of chromosome 17q12-q21 and have the same direction of transcription.



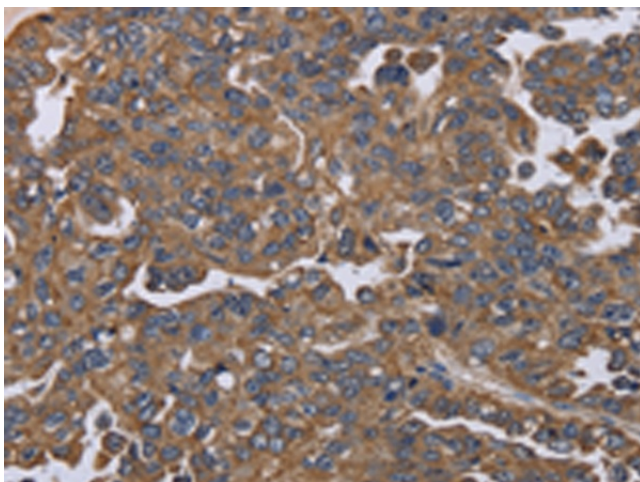
[View online »](#)

Synonyms: Ha-1; HA1; hHa1; KRTHA1

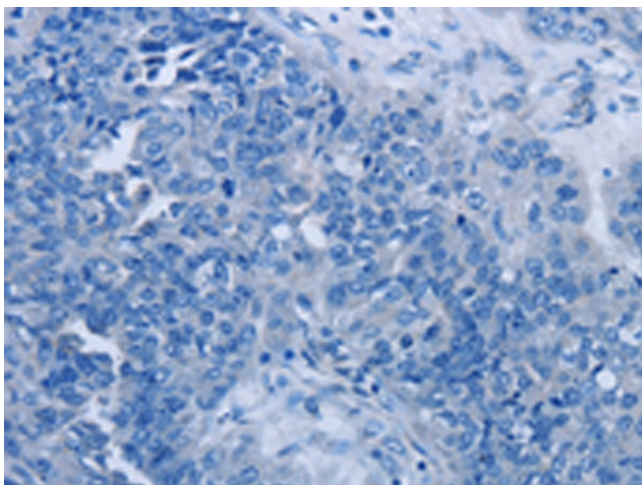
Product images:



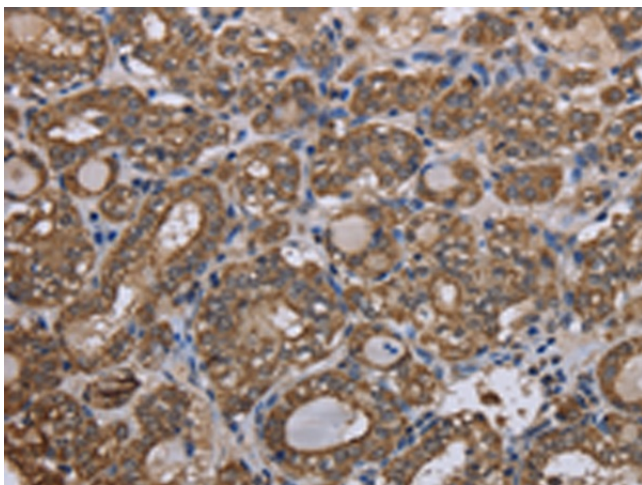
Gel: 8%SDS-PAGE
Lysate: 40 μ g
Lane: Human normal liver tissue
Primary antibody: TA323042 (KRT31 Antibody) at dilution 1/200
Secondary antibody: Goat anti rabbit IgG at 1/8000 dilution
Exposure time: 10 seconds



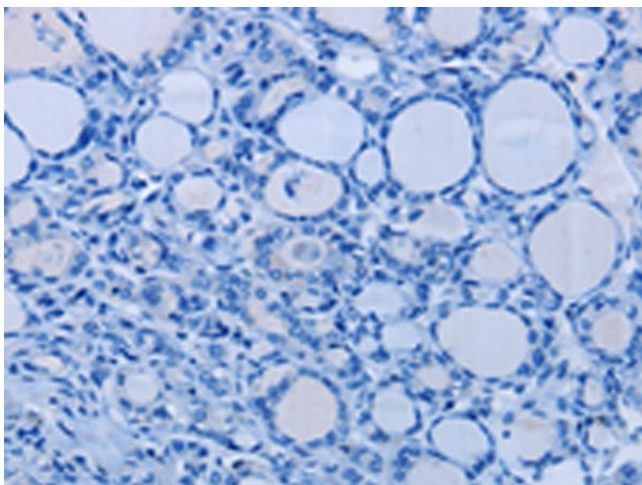
Immunohistochemistry of paraffin-embedded Human ovarian cancer tissue using TA323042 (KRT31 Antibody) at dilution 1/20 (Original magnification: \times 200)



Immunohistochemistry of paraffin-embedded Human ovarian cancer tissue using TA323042 (KRT31 Antibody) at dilution 1/20, treated with fusion protein. (Original magnification: ×200)



Immunohistochemistry of paraffin-embedded Human thyroid cancer tissue using TA323042 (KRT31 Antibody) at dilution 1/20 (Original magnification: ×200)



Immunohistochemistry of paraffin-embedded Human thyroid cancer tissue using TA323042 (KRT31 Antibody) at dilution 1/20, treated with fusion protein. (Original magnification: ×200)