

## Product datasheet for **TA323041S**

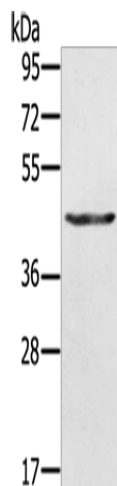
### **KRT31 Rabbit Polyclonal Antibody**

#### **Product data:**

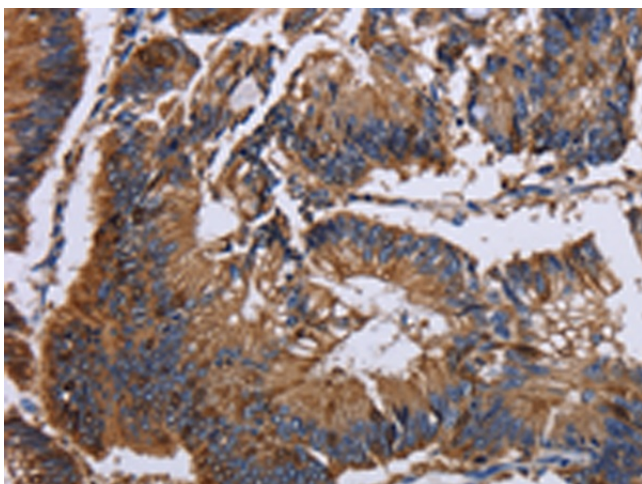
Product Type:	Primary Antibodies
Applications:	IHC, WB
Recommended Dilution:	WB: 500-2000 WB positive control: A549 cells IHC: 25-100 Positive control: Human colon cancer Predicted cell location: Cytoplasm
Reactivity:	Human, Mouse
Host:	Rabbit
Isotype:	IgG
Clonality:	Polyclonal
Immunogen:	Fusion protein corresponding to a region derived from 100-400 amino acids of Human Keratin-31
Formulation:	PBS pH7.3, 0.05% NaN <sub>3</sub> , 50% glycerol
Purification:	Antigen affinity purification
Conjugation:	Unconjugated
Storage:	Store at -20°C as received.
Stability:	Stable for 12 months from date of receipt.
Predicted Protein Size:	47 kDa
Gene Name:	keratin 31
Database Link:	<a href="#">NP_002268</a> <a href="#">Entrez Gene 16660 Mouse</a> <a href="#">Entrez Gene 3881 Human</a> <a href="#">Q15323</a>
Background:	The protein encoded by this gene is a member of the keratin gene family. As a type I hair keratin; it is an acidic protein which heterodimerizes with type II keratins to form hair and nails. The type I hair keratins are clustered in a region of chromosome 17q12-q21 and have the same direction of transcription.
Synonyms:	Ha-1; HA1; hHa1; KRTHA1



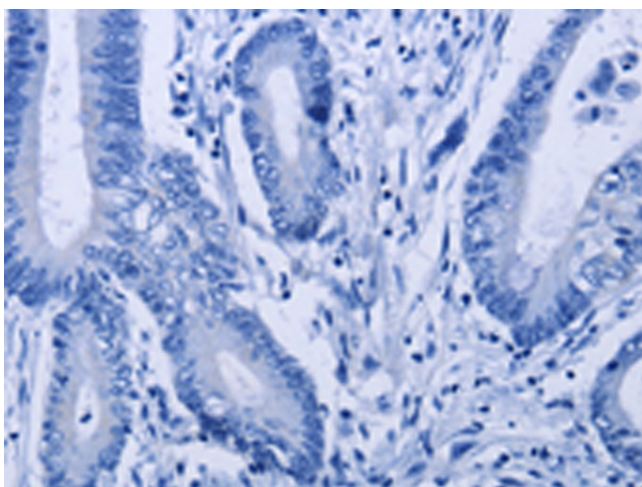
[View online »](#)

**Product images:**

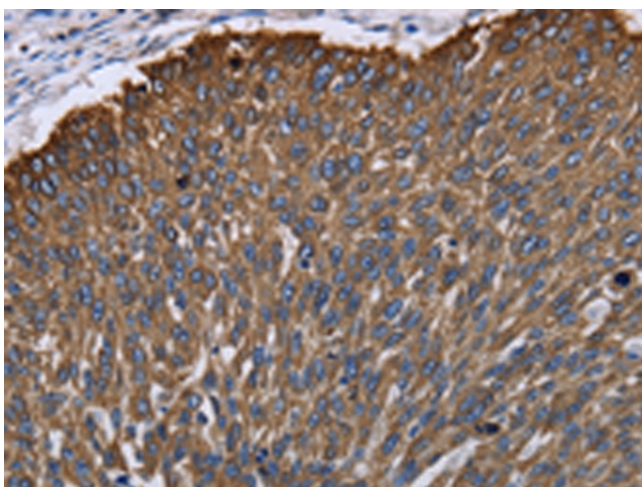
Gel: 10%SDS-PAGE  
Lysate: 30  $\mu$ g  
Lane: A549 cells  
Primary antibody: [TA323041] (KRT31 Antibody)  
at dilution 1/500  
Secondary antibody: Goat anti rabbit IgG at  
1/8000 dilution  
Exposure time: 10 seconds



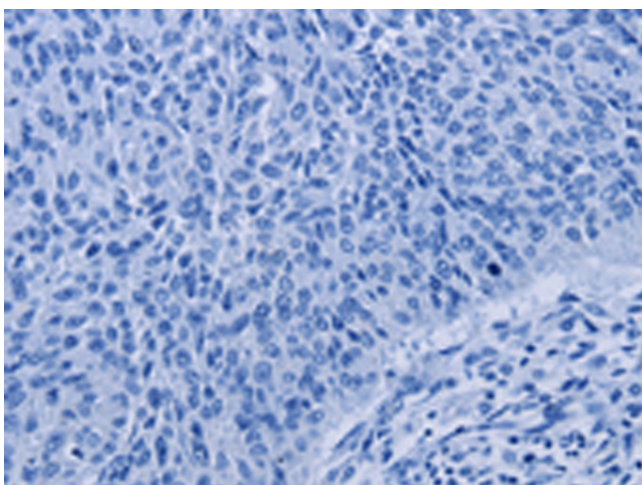
Immunohistochemistry of paraffin-embedded  
Human colon cancer tissue using [TA323041]  
(KRT31 Antibody) at dilution 1/30 (Original  
magnification:  $\times$ 200)



Immunohistochemistry of paraffin-embedded Human colon cancer tissue using [TA323041] (KRT31 Antibody) at dilution 1/30, treated with fusion protein. (Original magnification:  $\times 200$ )



Immunohistochemistry of paraffin-embedded Human lung cancer tissue using [TA323041] (KRT31 Antibody) at dilution 1/30 (Original magnification:  $\times 200$ )



Immunohistochemistry of paraffin-embedded Human lung cancer tissue using [TA323041] (KRT31 Antibody) at dilution 1/30, treated with fusion protein. (Original magnification:  $\times 200$ )