

Product datasheet for **TA323041**

KRT31 Rabbit Polyclonal Antibody

Product data:

Product Type:	Primary Antibodies
Applications:	IHC, WB
Recommended Dilution:	WB: 500-2000 WB positive control: A549 cells IHC: 25-100 Positive control: Human colon cancer Predicted cell location: Cytoplasm
Reactivity:	Human, Mouse
Host:	Rabbit
Isotype:	IgG
Clonality:	Polyclonal
Immunogen:	Fusion protein corresponding to a region derived from 100-400 amino acids of Human Keratin-31
Formulation:	PBS pH7.3, 0.05% NaN ₃ , 50% glycerol
Concentration:	lot specific
Purification:	Antigen affinity purification
Conjugation:	Unconjugated
Storage:	Store at -20°C as received.
Stability:	Stable for 12 months from date of receipt.
Predicted Protein Size:	47 kDa
Gene Name:	keratin 31
Database Link:	NP_002268 Entrez Gene 16660 Mouse Entrez Gene 3881 Human Q15323

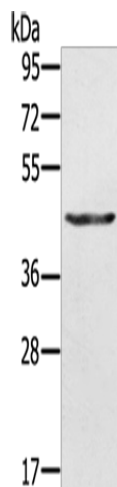
Background: The protein encoded by this gene is a member of the keratin gene family. As a type I hair keratin; it is an acidic protein which heterodimerizes with type II keratins to form hair and nails. The type I hair keratins are clustered in a region of chromosome 17q12-q21 and have the same direction of transcription.



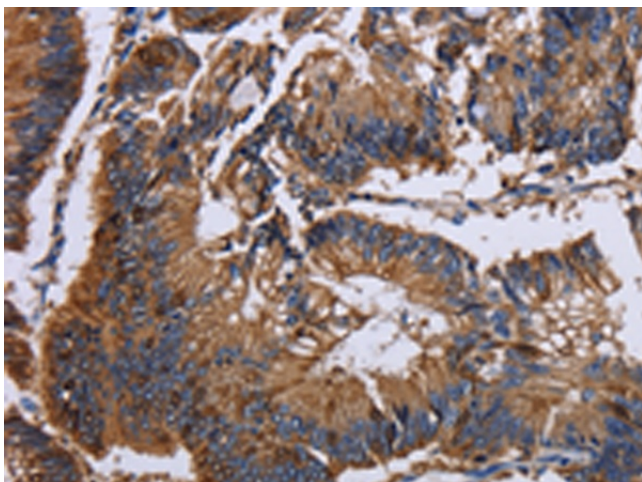
[View online »](#)

Synonyms: Ha-1; HA1; hHa1; KRTHA1

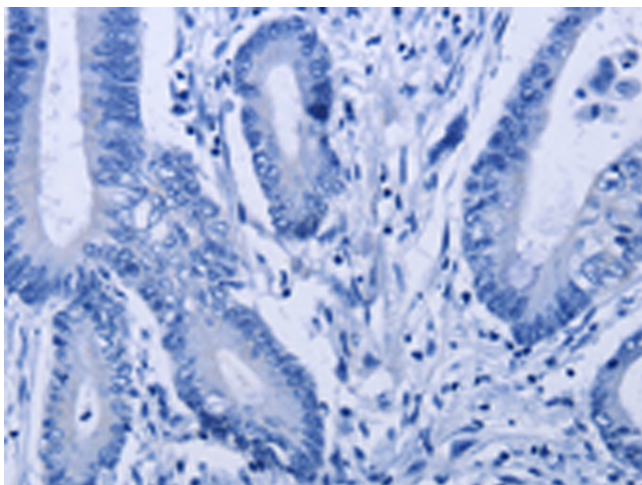
Product images:



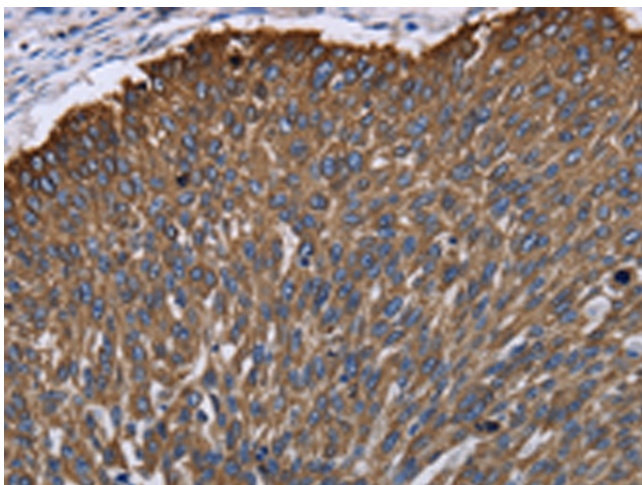
Gel: 10%SDS-PAGE
Lysate: 30 μ g
Lane: A549 cells
Primary antibody: TA323041 (KRT31 Antibody) at dilution 1/500
Secondary antibody: Goat anti rabbit IgG at 1/8000 dilution
Exposure time: 10 seconds



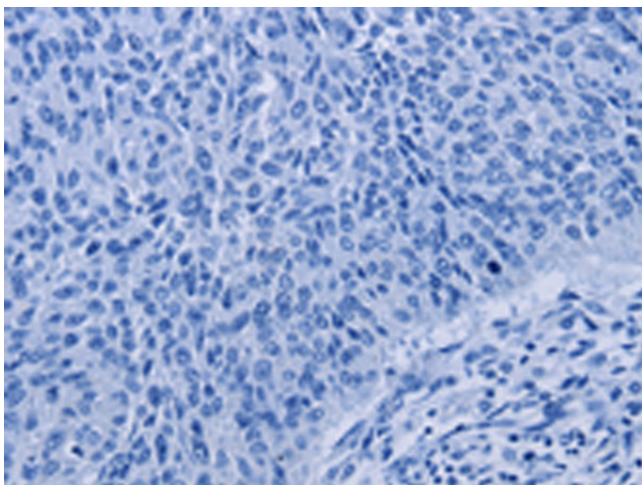
Immunohistochemistry of paraffin-embedded Human colon cancer tissue using TA323041 (KRT31 Antibody) at dilution 1/30 (Original magnification: \times 200)



Immunohistochemistry of paraffin-embedded Human colon cancer tissue using TA323041 (KRT31 Antibody) at dilution 1/30, treated with fusion protein. (Original magnification: x200)



Immunohistochemistry of paraffin-embedded Human lung cancer tissue using TA323041 (KRT31 Antibody) at dilution 1/30 (Original magnification: x200)



Immunohistochemistry of paraffin-embedded Human lung cancer tissue using TA323041 (KRT31 Antibody) at dilution 1/30, treated with fusion protein. (Original magnification: x200)