

## Product datasheet for **TA323037S**

### Cytokeratin 15 (KRT15) Rabbit Polyclonal Antibody

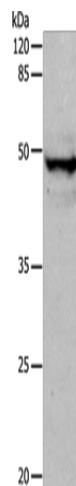
#### Product data:

Product Type:	Primary Antibodies
Applications:	WB
Recommended Dilution:	WB: 500-2000 WB positive control: Mouse thymus tissue
Reactivity:	Human, Mouse, Rat
Host:	Rabbit
Isotype:	IgG
Clonality:	Polyclonal
Immunogen:	Fusion protein corresponding to C terminal 300 amino acids of Human Keratin, type I cytoskeletal 15
Formulation:	PBS pH7.3, 0.05% NaN <sub>3</sub> , 50% glycerol
Purification:	Antigen affinity purification
Conjugation:	Unconjugated
Storage:	Store at -20°C as received.
Stability:	Stable for 12 months from date of receipt.
Predicted Protein Size:	49 kDa
Gene Name:	keratin 15
Database Link:	<a href="#">NP_002266</a> <a href="#">Entrez Gene 16665 MouseEntrez Gene 287700 RatEntrez Gene 3866 Human P19012</a>
Background:	The protein encoded by this gene is a member of the keratin gene family. The keratins are intermediate filament proteins responsible for the structural integrity of epithelial cells and are subdivided into cytokeratins and hair keratins. Most of the type I cytokeratins consist of acidic proteins which are arranged in pairs of heterotypic keratin chains and are clustered in a region on chromosome 17q21.2.
Synonyms:	CK15; K1CO; K15



[View online »](#)

## Product images:



Gel: 10%SDS-PAGE  
Lysate: 30  $\mu$ g  
Lane: Mouse thymus tissue  
Primary antibody: [TA323037] (KRT15 Antibody)  
at dilution 1/400  
Secondary antibody: Goat anti rabbit IgG at  
1/8000 dilution  
Exposure time: 1.5 minutes