

## Product datasheet for **TA323034**

### **KRT13 Rabbit Polyclonal Antibody**

#### **Product data:**

|                       |  |
|-----------------------|--|
| Product Type:         | Primary Antibodies   |
| Applications:         | IHC  |
| Recommended Dilution: | IHC: 50-200<br>Positive control: Human thyroid cancer<br>Predicted cell location: Cytoplasm  |
| Reactivity:           | Human, Mouse, Rat  |
| Host:                 | Rabbit   |
| Isotype:              | IgG  |
| Clonality:            | Polyclonal   |
| Immunogen:            | Fusion protein corresponding to a region derived from 274-412 amino acids of human keratin 13  |
| Formulation:          | PBS pH7.3, 0.05% NaN <sub>3</sub> , 50% glycerol   |
| Concentration:        | lot specific   |
| Purification:         | Antigen affinity purification  |
| Conjugation:          | Unconjugated   |
| Storage:              | Store at -20°C as received.  |
| Stability:            | Stable for 12 months from date of receipt.   |
| Gene Name:            | keratin 13   |
| Database Link:        | <a href="#">NP_002265</a><br><a href="#">Entrez Gene 16663 Mouse</a> <a href="#">Entrez Gene 287699 Rat</a> <a href="#">Entrez Gene 3860 Human</a><br><a href="#">P13646</a> |



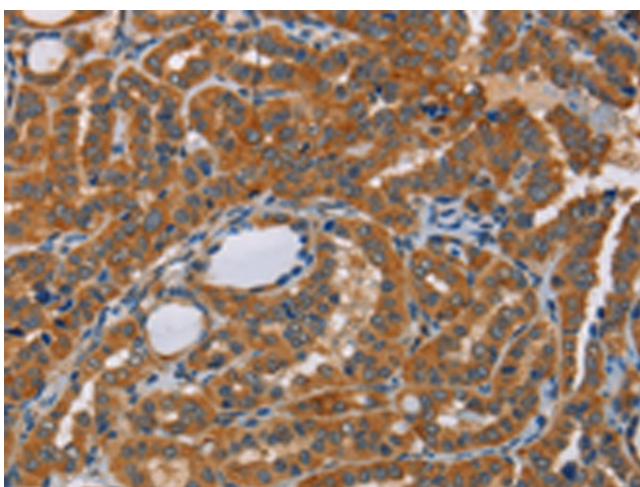
[View online »](#)

**Background:**

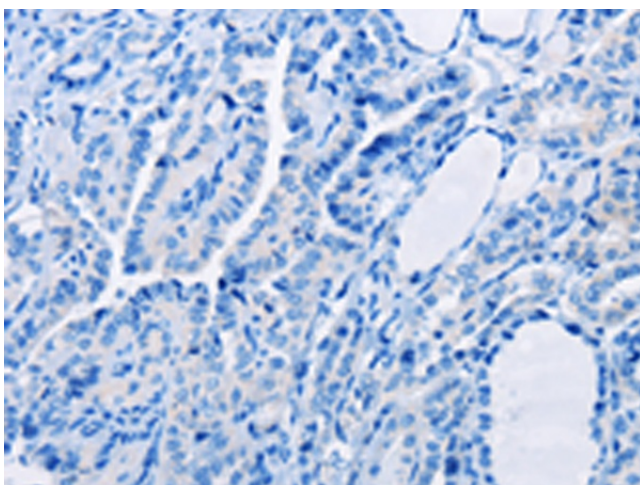
The protein encoded by this gene is a member of the keratin gene family. The keratins are intermediate filament proteins responsible for the structural integrity of epithelial cells and are subdivided into cytokeratins and hair keratins. Most of the type I cytokeratins consist of acidic proteins which are arranged in pairs of heterotypic keratin chains. This type I cytokeratin is paired with keratin 4 and expressed in the suprabasal layers of non-cornified stratified epithelia. Mutations in this gene and keratin 4 have been associated with the autosomal dominant disorder White Sponge Nevus. The type I cytokeratins are clustered in a region of chromosome 17q21.2. Alternative splicing of this gene results in multiple transcript variants; however, not all variants have been described.

**Synonyms:**

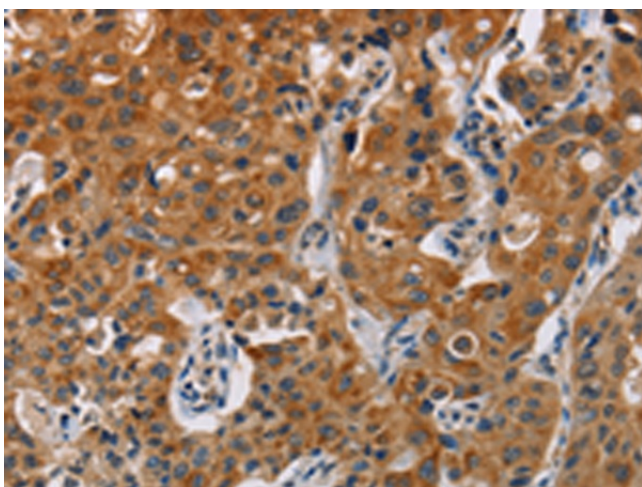
CK13; K13; WSN2

**Product images:**


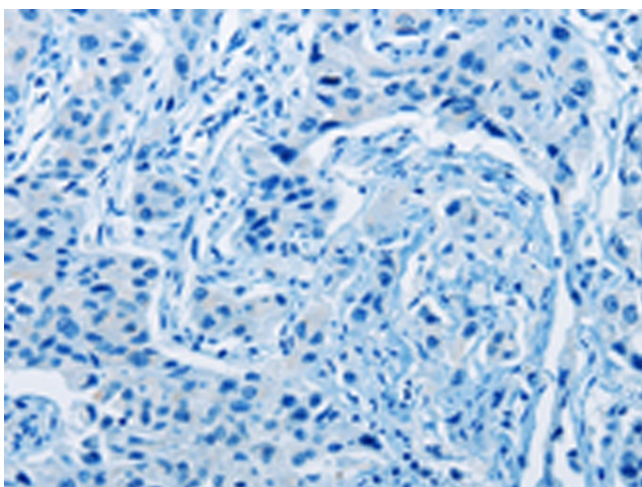
Immunohistochemistry of paraffin-embedded Human thyroid cancer tissue using TA323034 (KRT13 Antibody) at dilution 1/50 (Original magnification: ×200)



Immunohistochemistry of paraffin-embedded Human thyroid cancer tissue using TA323034 (KRT13 Antibody) at dilution 1/50, treated with fusion protein. (Original magnification: ×200)



Immunohistochemistry of paraffin-embedded Human lung cancer tissue using TA323034 (KRT13 Antibody) at dilution 1/50 (Original magnification: ×200)



Immunohistochemistry of paraffin-embedded Human lung cancer tissue using TA323034 (KRT13 Antibody) at dilution 1/50, treated with fusion protein. (Original magnification: ×200)