

Product datasheet for **TA323030**

LAIR2 Rabbit Polyclonal Antibody

Product data:

Product Type:	Primary Antibodies
Applications:	IHC
Recommended Dilution:	IHC: 25-100 Positive control: Human tonsil Predicted cell location: Cytoplasm
Reactivity:	Human
Host:	Rabbit
Isotype:	IgG
Clonality:	Polyclonal
Immunogen:	Synthetic peptide corresponding to a region derived from 140-152 amino acids of Human leukocyte-associated immunoglobulin-like receptor 2
Formulation:	PBS pH7.3, 0.05% NaN ₃ , 50% glycerol
Concentration:	lot specific
Purification:	Antigen affinity purification
Conjugation:	Unconjugated
Storage:	Store at -20°C as received.
Stability:	Stable for 12 months from date of receipt.
Predicted Protein Size:	16 kDa
Gene Name:	leukocyte associated immunoglobulin like receptor 2
Database Link:	NP_002279 Entrez Gene 3904 Human Q6ISS4
Background:	The protein encoded by this gene is a member of the immunoglobulin superfamily. It was identified by its similarity to LAIR1; an inhibitory receptor present on mononuclear leukocytes. This gene maps to a region of 19q13.4; termed the leukocyte receptor cluster; which contains 29 genes in the immunoglobulin superfamily; including LAIR1. The function of this protein is unknown; although it is thought to be secreted and may help modulate mucosal tolerance. Two transcript variants encoding different isoforms have been found for this gene.

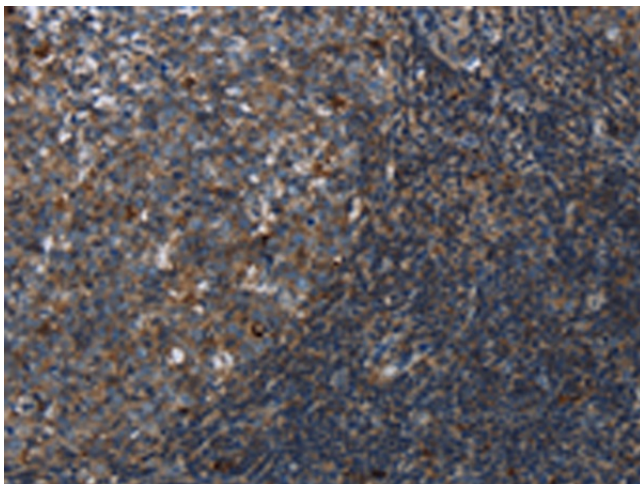


[View online »](#)

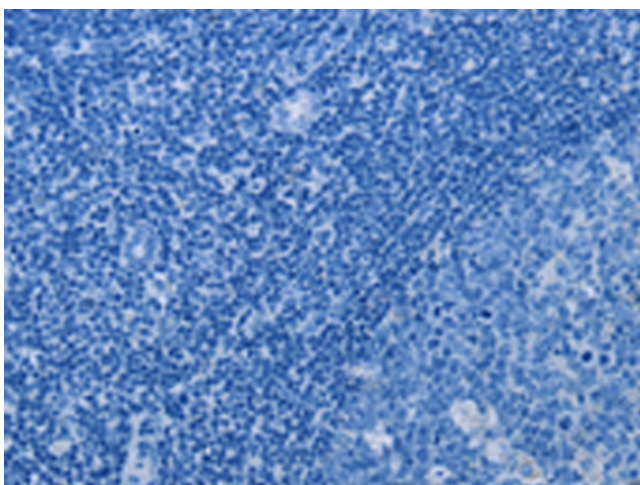
Synonyms: CD306

Protein Families: Secreted Protein

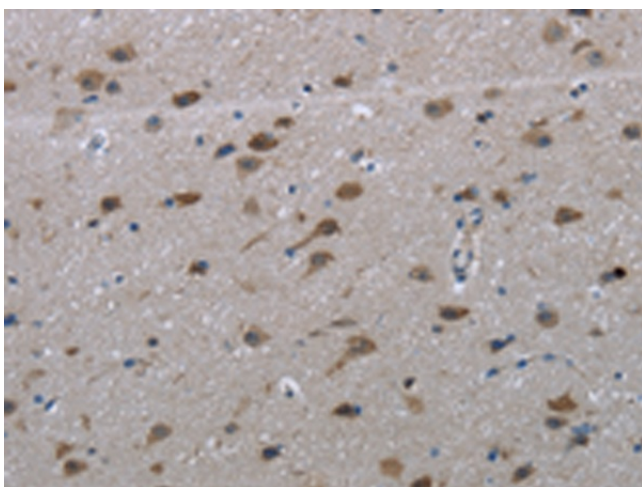
Product images:



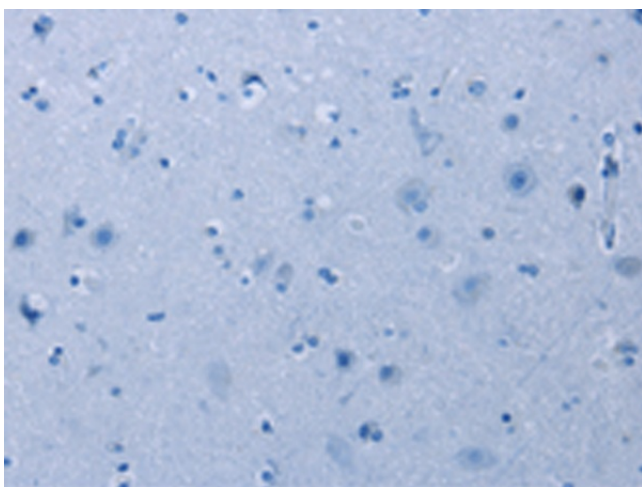
Immunohistochemistry of paraffin-embedded Human tonsil tissue using TA323030 (LAIR2 Antibody) at dilution 1/20 (Original magnification: ×200)



Immunohistochemistry of paraffin-embedded Human tonsil tissue using TA323030 (LAIR2 Antibody) at dilution 1/20, treated with synthetic peptide. (Original magnification: ×200)



Immunohistochemistry of paraffin-embedded Human brain tissue using TA323030 (LAIR2 Antibody) at dilution 1/20 (Original magnification: ×200)



Immunohistochemistry of paraffin-embedded Human brain tissue using TA323030 (LAIR2 Antibody) at dilution 1/20, treated with synthetic peptide. (Original magnification: ×200)