

Product datasheet for **TA323028**

LIFR Rabbit Polyclonal Antibody

Product data:

Product Type:	Primary Antibodies
Applications:	IHC
Recommended Dilution:	IHC: 25-100 Positive control: Human colon cancer Predicted cell location: Cytoplasm, Nucleus
Reactivity:	Human
Host:	Rabbit
Isotype:	IgG
Clonality:	Polyclonal
Immunogen:	Synthetic peptide corresponding to a region derived from 115-128 amino acids of Human leukemia inhibitory factor receptor alpha
Formulation:	PBS pH7.3, 0.05% NaN ₃ , 50% glycerol
Concentration:	lot specific
Purification:	Antigen affinity purification
Conjugation:	Unconjugated
Storage:	Store at -20°C as received.
Stability:	Stable for 12 months from date of receipt.
Gene Name:	leukemia inhibitory factor receptor alpha
Database Link:	NP_002301 Entrez Gene 3977 Human P42702



[View online »](#)

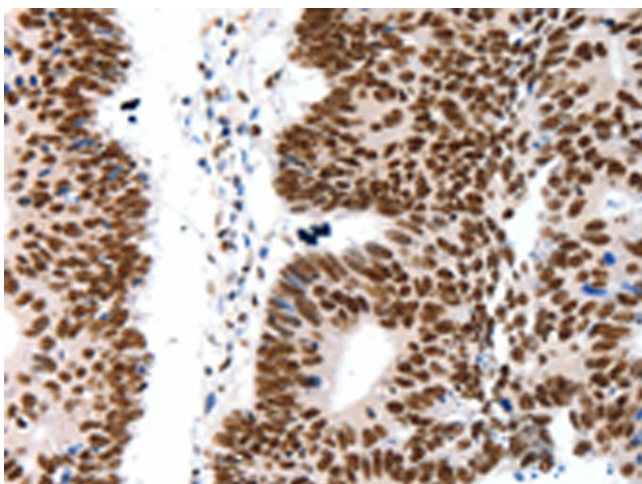
Background: This gene encodes a protein that belongs to the type I cytokine receptor family. This protein combines with a high-affinity converter subunit; gp130; to form a receptor complex that mediates the action of the leukemia inhibitory factor; a polyfunctional cytokine that is involved in cellular differentiation; proliferation and survival in the adult and the embryo. Mutations in this gene cause Schwartz-Jampel syndrome type 2; a disease belonging to the group of the bent-bone dysplasias. A translocation that involves the promoter of this gene; t(5;8)(p13;q12) with the pleiomorphic adenoma gene 1; is associated with salivary gland pleiomorphic adenoma; a common type of benign epithelial tumor of the salivary gland. Multiple splice variants encoding the same protein have been found for this gene.

Synonyms: CD118; LIF-R; SJS2; STWS; SWS

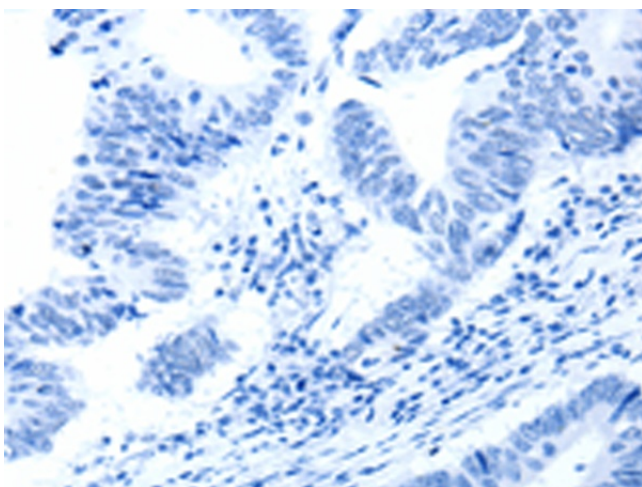
Protein Families: Druggable Genome, Secreted Protein, Transmembrane

Protein Pathways: Cytokine-cytokine receptor interaction, Jak-STAT signaling pathway

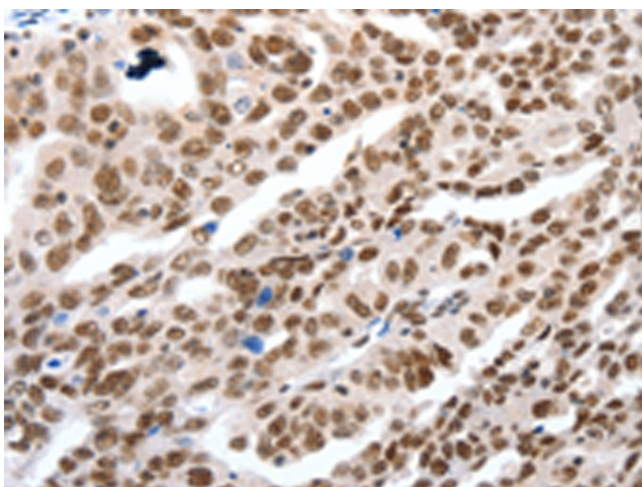
Product images:



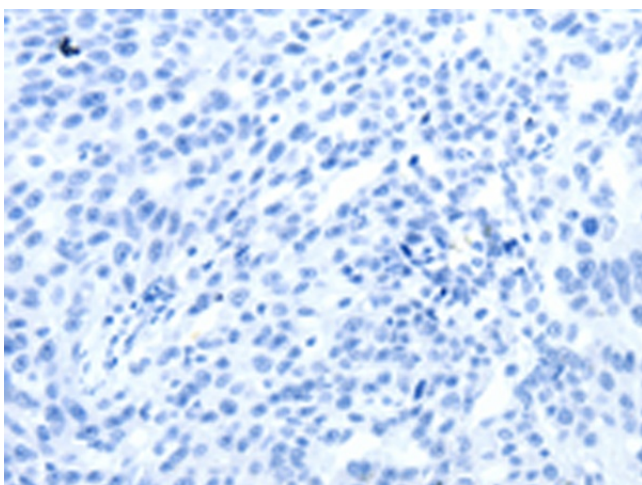
Immunohistochemistry of paraffin-embedded Human colon cancer tissue using TA323028 (LIFR Antibody) at dilution 1/15 (Original magnification: ×200)



Immunohistochemistry of paraffin-embedded Human colon cancer tissue using TA323028 (LIFR Antibody) at dilution 1/15, treated with synthetic peptide. (Original magnification: ×200)



Immunohistochemistry of paraffin-embedded Human ovarian cancer tissue using TA323028 (LIFR Antibody) at dilution 1/15 (Original magnification: ×200)



Immunohistochemistry of paraffin-embedded Human ovarian cancer tissue using TA323028 (LIFR Antibody) at dilution 1/15, treated with synthetic peptide. (Original magnification: ×200)