

## Product datasheet for **TA323026**

### LRPAP1 Rabbit Polyclonal Antibody

#### Product data:

Product Type:	Primary Antibodies
Applications:	IHC, WB
Recommended Dilution:	WB: 500-2000 WB positive control: 293T cells and fetal kidney tissue IHC: 50-200 Positive control: Human colon cancer Predicted cell location: Cytoplasm
Reactivity:	Human, Mouse, Rat
Host:	Rabbit
Isotype:	IgG
Clonality:	Polyclonal
Immunogen:	Synthetic peptide corresponding to a region derived from 344-357 amino acids of Human low density lipoprotein receptor-related protein associated protein 1
Formulation:	PBS pH7.3, 0.05% NaN <sub>3</sub> , 50% glycerol
Concentration:	lot specific
Purification:	Antigen affinity purification
Conjugation:	Unconjugated
Storage:	Store at -20°C as received.
Stability:	Stable for 12 months from date of receipt.
Predicted Protein Size:	41 kDa
Gene Name:	LDL receptor related protein associated protein 1
Database Link:	<a href="#">NP_002328</a> <a href="#">Entrez Gene 16976 Mouse</a> <a href="#">Entrez Gene 116565 Rat</a> <a href="#">Entrez Gene 4043 Human</a> <a href="#">P30533</a>



[View online »](#)

**Background:**

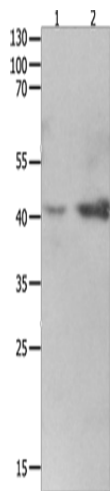
Low density lipoprotein receptor-related protein associated protein 1?also known as?LRPAP1? or?RAP?is a chaperone?protein?which in humans is encoded by the LRPAP1?gene. LRPAP1 is involved with trafficking of certain members of the LDL receptor family including LRP1 and LRP2. It is a glycoprotein that binds to the alpha-2-macroglobulin receptor; as well as to other members of the low density lipoprotein receptor family. It acts to inhibit the binding of all know ligands for these receptors; and may prevent receptor aggregation and degradation in the endoplasmic reticulum; thereby acting as a molecular chaperone. It may be under the regulatory control of calmodulin; since it is able to bind calmodulin and be phosphorylated by calmodulin-dependent kinase II.

**Synonyms:**

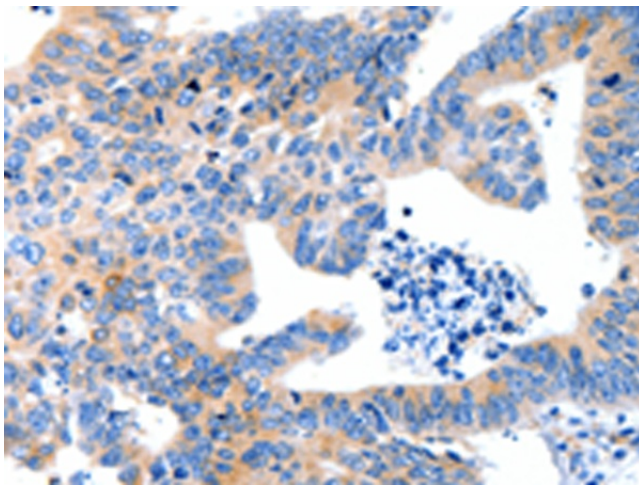
A2MRAP; A2RAP; alpha-2-MRAP; HBP44; MRAP; MYP23; RAP

**Protein Families:**

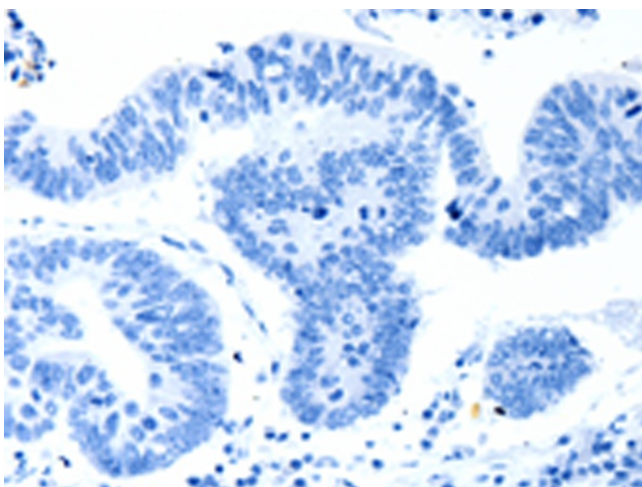
Druggable Genome, Transmembrane

**Product images:**

Gel: 10%SDS-PAGE  
Lysate: 40 µg  
Lane 1-2: 293T cells  
Human fetal kidney tissue  
Primary antibody: TA323026 (LRPAP1 Antibody)  
at dilution 1/1600  
Secondary antibody: Goat anti rabbit IgG at  
1/8000 dilution  
Exposure time: 2 minutes



Immunohistochemistry of paraffin-embedded  
Human colon cancer tissue using TA323026  
(LRPAP1 Antibody) at dilution 1/100 (Original  
magnification: x200)



Immunohistochemistry of paraffin-embedded Human colon cancer tissue using TA323026 (LRPAP1 Antibody) at dilution 1/100, treated with synthetic peptide. (Original magnification:  $\times 200$ )