

## Product datasheet for **TA323024**

### LRP5 Rabbit Polyclonal Antibody

#### Product data:

Product Type:	Primary Antibodies
Applications:	IHC
Recommended Dilution:	IHC: 50-200 Positive control: Human colon cancer Predicted cell location: Cytoplasm, Nucleus
Reactivity:	Human, Mouse
Host:	Rabbit
Isotype:	IgG
Clonality:	Polyclonal
Immunogen:	Synthetic peptide corresponding to a region derived from 1178-1190 amino acids of Human low density lipoprotein receptor-related protein 5
Formulation:	PBS pH7.3, 0.05% NaN <sub>3</sub> , 50% glycerol
Concentration:	lot specific
Purification:	Antigen affinity purification
Conjugation:	Unconjugated
Storage:	Store at -20°C as received.
Stability:	Stable for 12 months from date of receipt.
Gene Name:	LDL receptor related protein 5
Database Link:	<a href="#">NP_002326</a> <a href="#">Entrez Gene 16973 Mouse</a> <a href="#">Entrez Gene 4041 Human</a> <a href="#">O75197</a>

**Background:** This gene encodes a transmembrane low-density lipoprotein receptor that binds and internalizes ligands in the process of receptor-mediated endocytosis. This protein also acts as a co-receptor with Frizzled protein family members for transducing signals by Wnt proteins and was originally cloned on the basis of its association with type 1 diabetes mellitus in humans. This protein plays a key role in skeletal homeostasis and many bone density related diseases are caused by mutations in this gene. Mutations in this gene also cause familial exudative vitreoretinopathy.



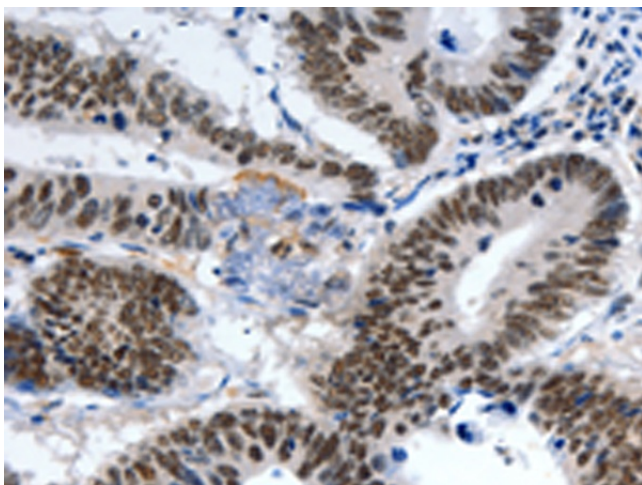
[View online »](#)

**Synonyms:** BMND1; EVR1; EVR4; HBM; LR3; LRP-5; LRP7; OPPG; OPS; OPTA1; VBCH2

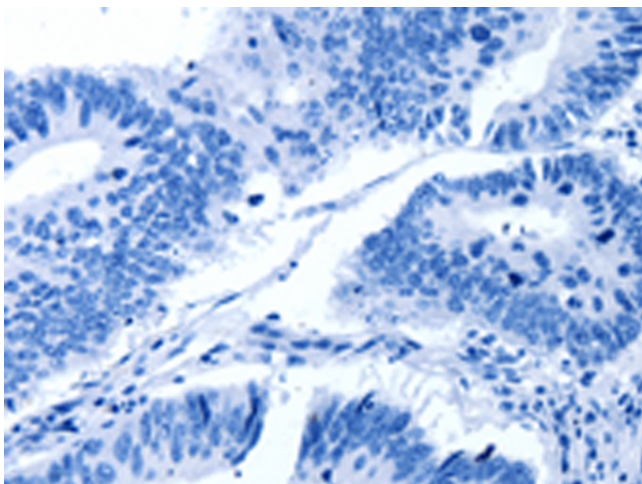
**Protein Families:** Druggable Genome, Transmembrane

**Protein Pathways:** Wnt signaling pathway

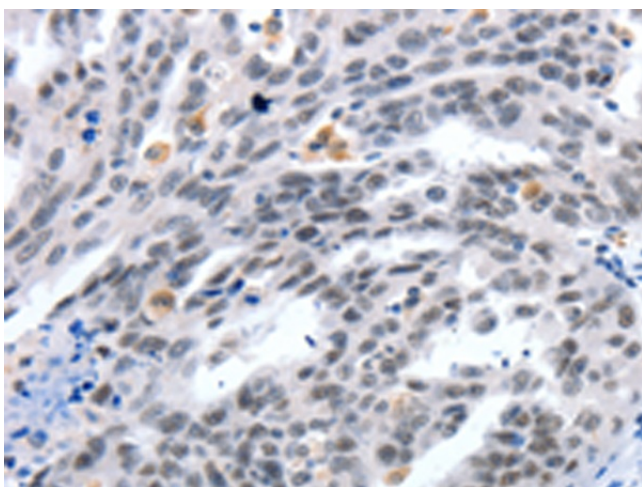
**Product images:**



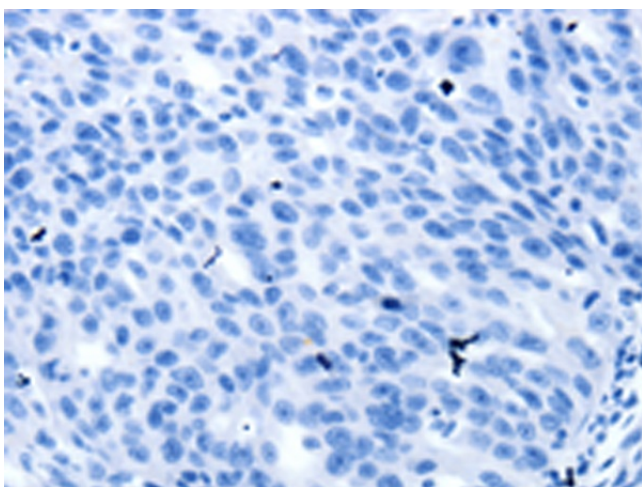
Immunohistochemistry of paraffin-embedded Human colon cancer tissue using TA323024 (LRP5 Antibody) at dilution 1/55 (Original magnification: ×200)



Immunohistochemistry of paraffin-embedded Human colon cancer tissue using TA323024 (LRP5 Antibody) at dilution 1/55, treated with synthetic peptide. (Original magnification: ×200)



Immunohistochemistry of paraffin-embedded Human ovarian cancer tissue using TA323024 (LRP5 Antibody) at dilution 1/55 (Original magnification:  $\times 200$ )



Immunohistochemistry of paraffin-embedded Human ovarian cancer tissue using TA323024 (LRP5 Antibody) at dilution 1/55, treated with synthetic peptide. (Original magnification:  $\times 200$ )