

Product datasheet for **TA323023**

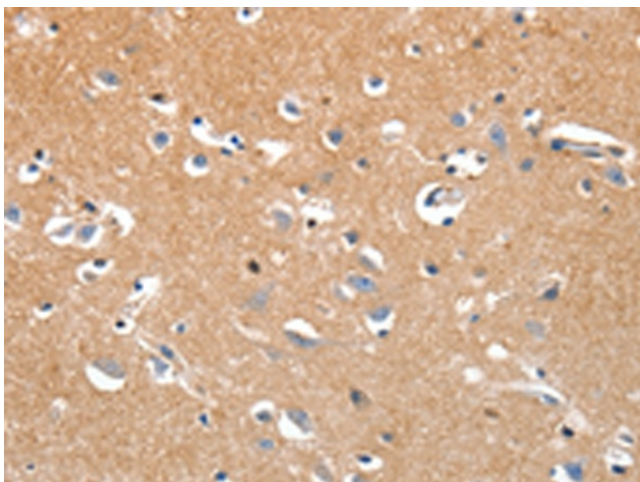
LRP3 Rabbit Polyclonal Antibody

Product data:

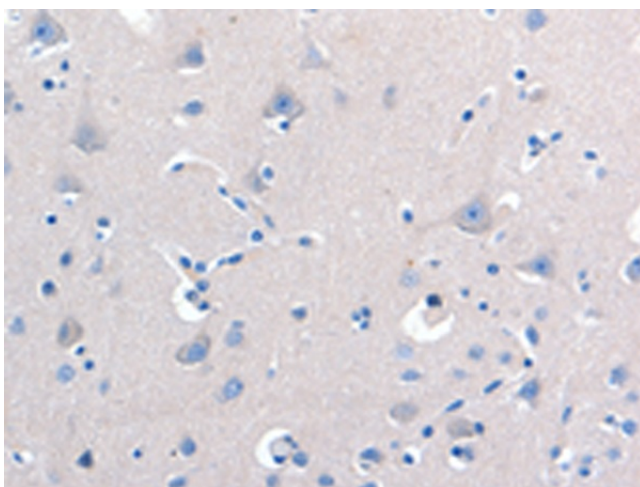
Product Type:	Primary Antibodies
Applications:	IHC
Recommended Dilution:	IHC: 100-300 Positive control: Human brain Predicted cell location: Cytoplasm, Cell membrane
Reactivity:	Human
Host:	Rabbit
Isotype:	IgG
Clonality:	Polyclonal
Immunogen:	Synthetic peptide corresponding to a region derived from 686-699 amino acids of Human low density lipoprotein receptor-related protein 3
Formulation:	PBS pH7.3, 0.05% NaN ₃ , 50% glycerol
Concentration:	lot specific
Purification:	Antigen affinity purification
Conjugation:	Unconjugated
Storage:	Store at -20°C as received.
Stability:	Stable for 12 months from date of receipt.
Gene Name:	LDL receptor related protein 3
Database Link:	NP_002324 Entrez Gene 4037 Human O75074
Background:	Low density lipoprotein receptor-related protein 3 (LRP-3) is a protein that in humans is encoded by the LRP3 gene. Probable receptor; which may be involved in the internalization of lipophilic molecules and/or signal transduction. Its precise role is however unclear; since it does not bind to very low density lipoprotein (VLDL) or to LRPAP1 in vitro.
Synonyms:	low density lipoprotein receptor-related protein 3
Protein Families:	Druggable Genome, Transmembrane



[View online »](#)

Product images:

Immunohistochemistry of paraffin-embedded Human brain tissue using TA323023 (LRP3 Antibody) at dilution 1/80 (Original magnification: ×200)



Immunohistochemistry of paraffin-embedded Human brain tissue using TA323023 (LRP3 Antibody) at dilution 1/80, treated with synthetic peptide. (Original magnification: ×200)