

Product datasheet for **TA323022S**

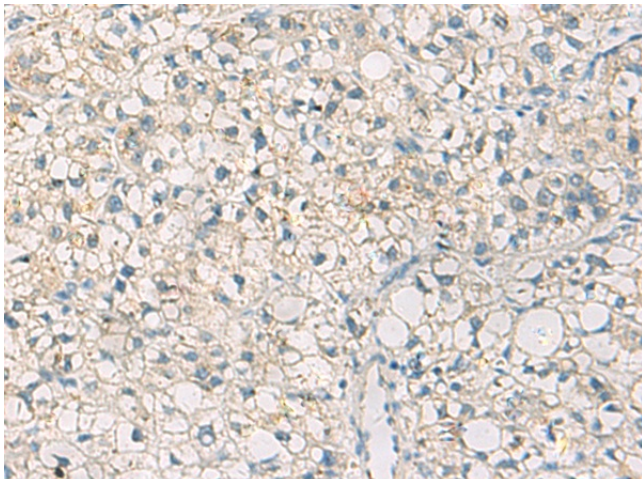
LY75 Rabbit Polyclonal Antibody

Product data:

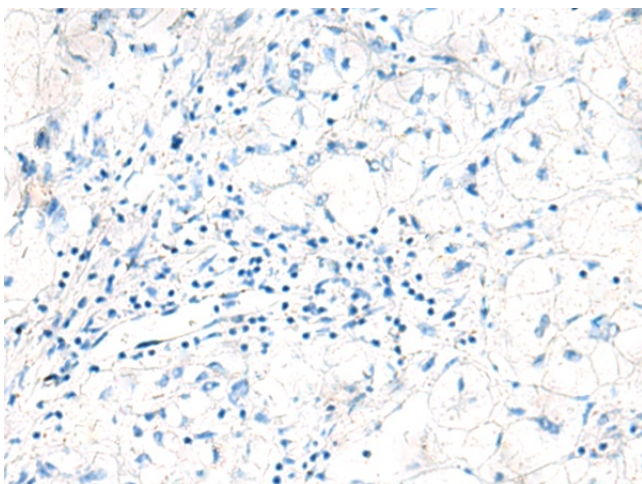
Product Type:	Primary Antibodies
Applications:	IHC
Recommended Dilution:	IHC: 50-100 Positive control: Human liver cancer Predicted cell location: Cytoplasm
Reactivity:	Human
Host:	Rabbit
Isotype:	IgG
Clonality:	Polyclonal
Immunogen:	Synthetic peptide corresponding to a region derived from 211-225 amino acids of Human Lymphocyte antigen 75
Formulation:	PBS pH7.3, 0.05% NaN ₃ , 50% glycerol
Purification:	Antigen affinity purification
Conjugation:	Unconjugated
Storage:	Store at -20°C as received.
Stability:	Stable for 12 months from date of receipt.
Gene Name:	lymphocyte antigen 75
Database Link:	NP_002340 Entrez Gene 4065 Human O60449
Background:	Lymphocyte antigen 75 is a protein that in humans is encoded by the LY75 gene. To direct captured antigens from the extracellular space to a specialized antigen-processing compartment as an endocytic receptor. Causes reduced proliferation of B-lymphocytes. Selection splicing results in multiple transcript variants encoding fusion products that share sequence identity with each individual gene product.
Synonyms:	CD205; CLEC13B; DEC-205; GP200-MR6; LY-75
Protein Families:	Transmembrane



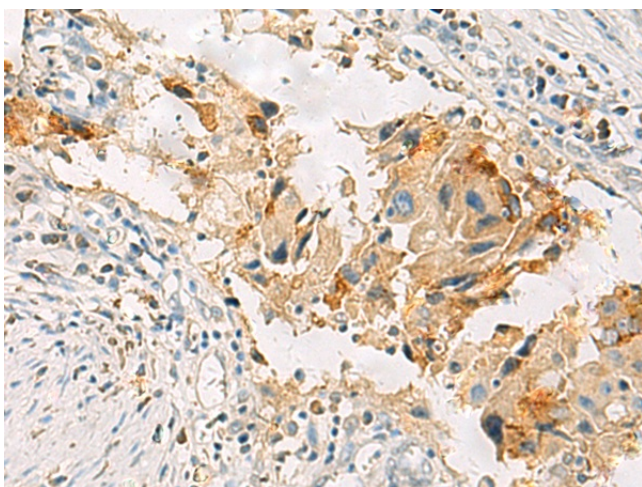
[View online »](#)

Product images:

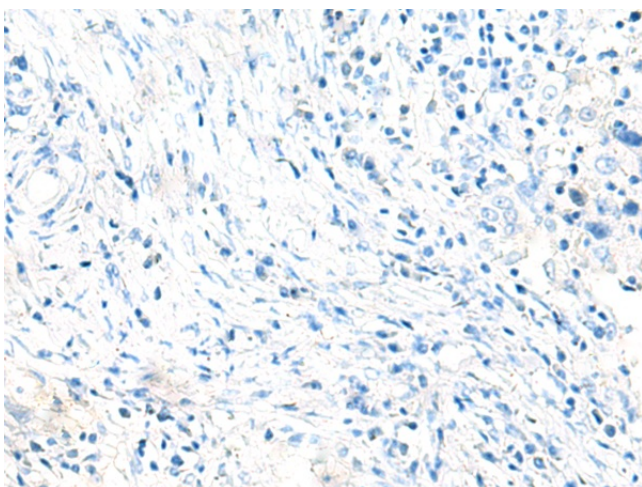
Immunohistochemistry of paraffin-embedded Human liver cancer tissue using [TA323022] (LY75 Antibody) at dilution 1/35 (Original magnification: x200)



Immunohistochemistry of paraffin-embedded Human liver cancer tissue using [TA323022] (LY75 Antibody) at dilution 1/35, treated with synthetic peptide. (Original magnification: x200)



Immunohistochemistry of paraffin-embedded Human breast cancer tissue using [TA323022] (LY75 Antibody) at dilution 1/35 (Original magnification: $\times 200$)



Immunohistochemistry of paraffin-embedded Human breast cancer tissue using [TA323022] (LY75 Antibody) at dilution 1/35, treated with synthetic peptide. (Original magnification: $\times 200$)