

## Product datasheet for **TA323022**

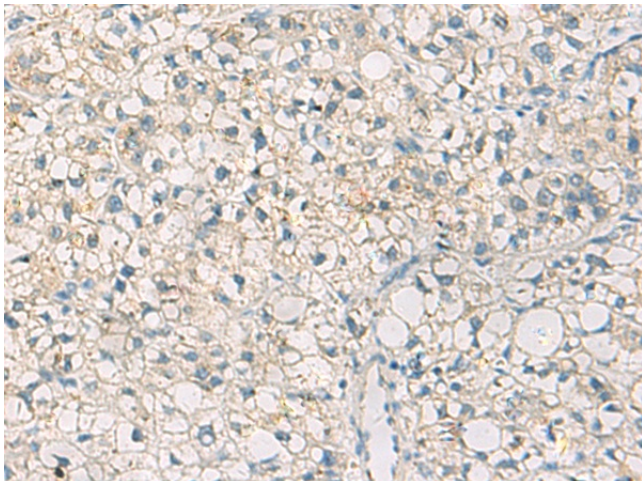
### LY75 Rabbit Polyclonal Antibody

#### Product data:

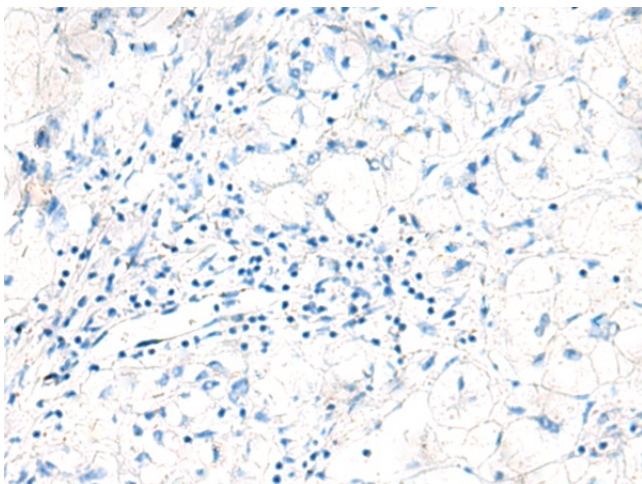
Product Type:	Primary Antibodies
Applications:	IHC
Recommended Dilution:	IHC: 50-100 Positive control: Human liver cancer Predicted cell location: Cytoplasm
Reactivity:	Human
Host:	Rabbit
Isotype:	IgG
Clonality:	Polyclonal
Immunogen:	Synthetic peptide corresponding to a region derived from 211-225 amino acids of Human Lymphocyte antigen 75
Formulation:	PBS pH7.3, 0.05% NaN <sub>3</sub> , 50% glycerol
Concentration:	lot specific
Purification:	Antigen affinity purification
Conjugation:	Unconjugated
Storage:	Store at -20°C as received.
Stability:	Stable for 12 months from date of receipt.
Gene Name:	lymphocyte antigen 75
Database Link:	<a href="#">NP_002340</a> <a href="#">Entrez Gene 4065 Human</a> <a href="#">O60449</a>
Background:	Lymphocyte antigen 75 is a protein that in humans is encoded by the LY75 gene. To direct captured antigens from the extracellular space to a specialized antigen-processing compartment as an endocytic receptor. Causes reduced proliferation of B-lymphocytes. Selection splicing results in multiple transcript variants encoding fusion products that share sequence identity with each individual gene product.
Synonyms:	CD205; CLEC13B; DEC-205; GP200-MR6; LY-75
Protein Families:	Transmembrane



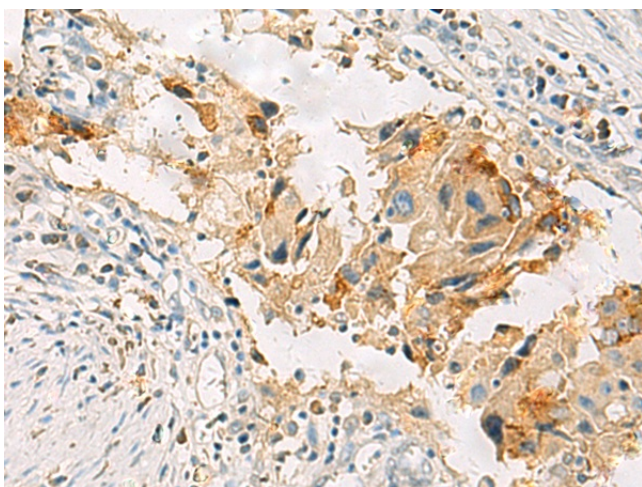
[View online »](#)

**Product images:**

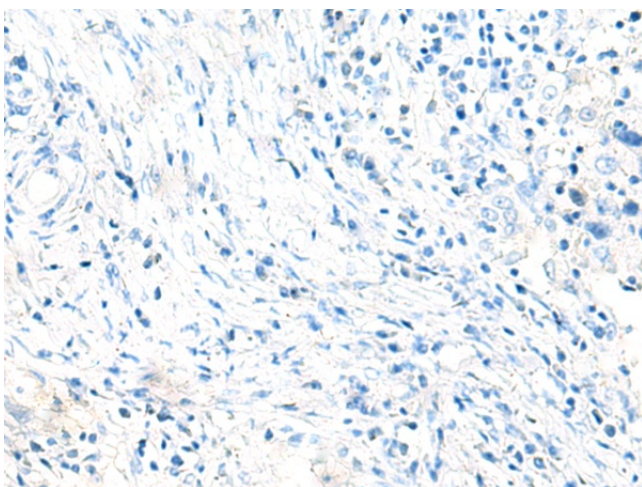
Immunohistochemistry of paraffin-embedded Human liver cancer tissue using TA323022 (LY75 Antibody) at dilution 1/35 (Original magnification:  $\times 200$ )



Immunohistochemistry of paraffin-embedded Human liver cancer tissue using TA323022 (LY75 Antibody) at dilution 1/35, treated with synthetic peptide. (Original magnification:  $\times 200$ )



Immunohistochemistry of paraffin-embedded Human breast cancer tissue using TA323022 (LY75 Antibody) at dilution 1/35 (Original magnification:  $\times 200$ )



Immunohistochemistry of paraffin-embedded Human breast cancer tissue using TA323022 (LY75 Antibody) at dilution 1/35, treated with synthetic peptide. (Original magnification:  $\times 200$ )