

Product datasheet for **TA323020**

MAGEB4 Rabbit Polyclonal Antibody

Product data:

Product Type:	Primary Antibodies
Applications:	IHC, WB
Recommended Dilution:	WB: 500-2000 WB positive control: Human brain glioma tissue IHC: 15-50 Positive control: Human colon cancer Predicted cell location: cytoplasm
Reactivity:	Human
Host:	Rabbit
Isotype:	IgG
Clonality:	Polyclonal
Immunogen:	Full length fusion protein
Formulation:	PBS pH7.3, 0.05% NaN ₃ , 50% glycerol
Concentration:	lot specific
Purification:	Antigen affinity purification
Conjugation:	Unconjugated
Storage:	Store at -20°C as received.
Stability:	Stable for 12 months from date of receipt.
Predicted Protein Size:	39 kDa
Gene Name:	MAGE family member B4
Database Link:	NP_002358 Entrez Gene 4115 Human O15481



[View online »](#)

Background:

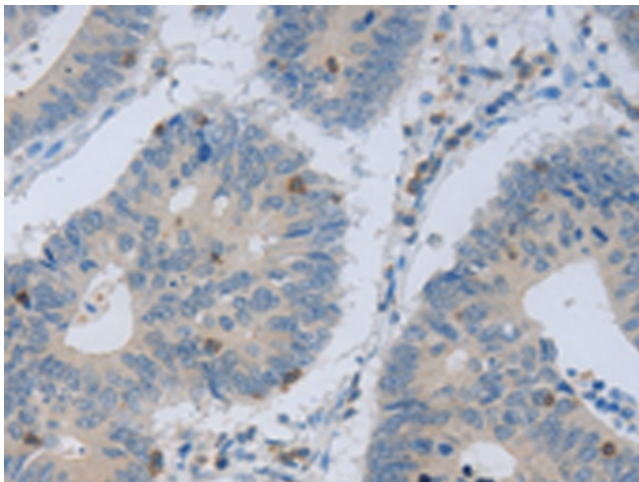
This gene is a member of the MAGEB gene family. The members of this family have their entire coding sequences located in the last exon; and the encoded proteins show 50 to 68 sequence identity to each other. The promoters and first exons of the MAGEB genes show considerable variability; suggesting that the existence of this gene family enables the same function to be expressed under different transcriptional controls. The MAGEB genes are clustered on chromosome Xp22-p21. This gene sequence ends in the first intron of MAGEB1; another family member. This gene is expressed in testis.?

Synonyms:

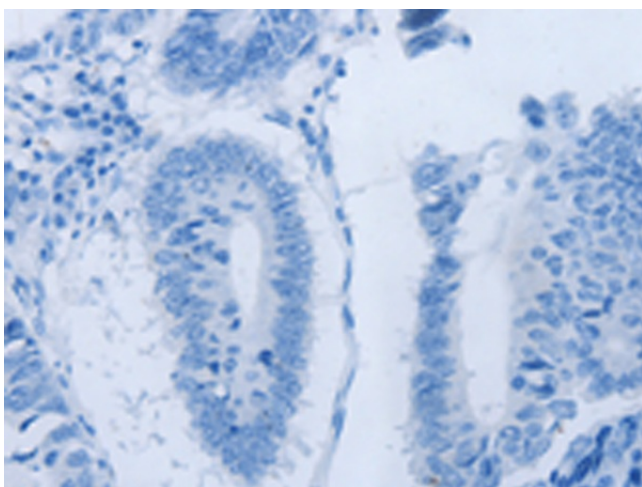
CT3.6

Product images:

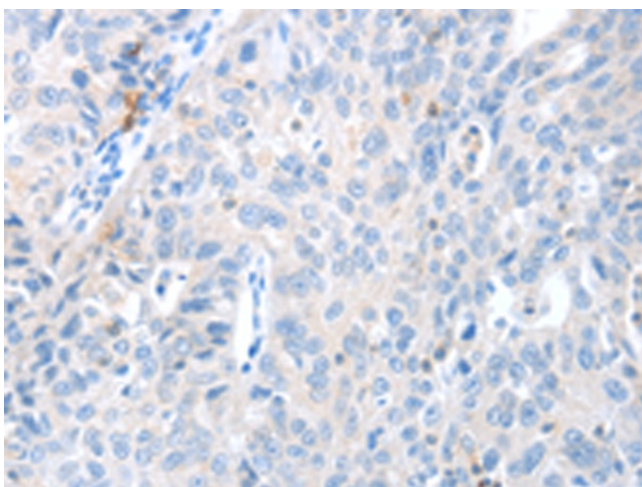
Gel: 10%SDS-PAGE
Lysate: 40 µg
Lane: Human brain glioma tissue
Primary antibody: TA323020 (MAGEB4 Antibody)
at dilution 1/550
Secondary antibody: Goat anti rabbit IgG at
1/8000 dilution
Exposure time: 2 minutes



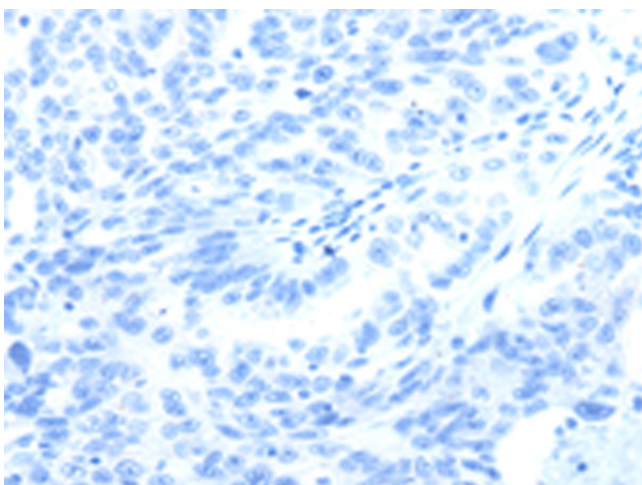
Immunohistochemistry of paraffin-embedded
Human colon cancer tissue using TA323020
(MAGEB4 Antibody) at dilution 1/40 (Original
magnification: ×200)



Immunohistochemistry of paraffin-embedded Human colon cancer tissue using TA323020 (MAGEB4 Antibody) at dilution 1/40, treated with fusion protein. (Original magnification: $\times 200$)



Immunohistochemistry of paraffin-embedded Human ovarian cancer tissue using TA323020 (MAGEB4 Antibody) at dilution 1/40 (Original magnification: $\times 200$)



Immunohistochemistry of paraffin-embedded Human ovarian cancer tissue using TA323020 (MAGEB4 Antibody) at dilution 1/40, treated with fusion protein. (Original magnification: $\times 200$)