

Product datasheet for **TA323016**

ADAM11 Rabbit Polyclonal Antibody

Product data:

Product Type:	Primary Antibodies
Applications:	IHC, WB
Recommended Dilution:	WB: 200-1000 WB positive control: Hela cells IHC: 25-100 Positive control: Human lung cancer Predicted cell location: Cytoplasm, Nucleus
Reactivity:	Human, Mouse
Host:	Rabbit
Isotype:	IgG
Clonality:	Polyclonal
Immunogen:	Synthetic peptide corresponding to a region derived from 567-580 amino acids of human ADAM metalloproteinase domain 11
Formulation:	PBS pH7.3, 0.05% NaN ₃ , 50% glycerol
Concentration:	lot specific
Purification:	Antigen affinity purification
Conjugation:	Unconjugated
Storage:	Store at -20°C as received.
Stability:	Stable for 12 months from date of receipt.
Predicted Protein Size:	83 kDa
Gene Name:	ADAM metalloproteinase domain 11
Database Link:	NP_002381 Entrez Gene 11488 Mouse Entrez Gene 4185 Human O75078



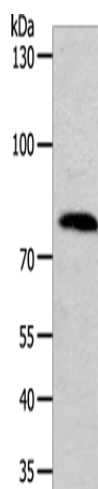
[View online »](#)

Background: This gene encodes a member of the ADAM (a disintegrin and metalloprotease) protein family. Members of this family are membrane-anchored proteins structurally related to snake venom disintegrins; and have been implicated in a variety of biological processes involving cell-cell and cell-matrix interactions; including fertilization; muscle development; and neurogenesis. This gene represents a candidate tumor suppressor gene for human breast cancer based on its location within a minimal region of chromosome 17q21 previously defined by tumor deletion mapping.

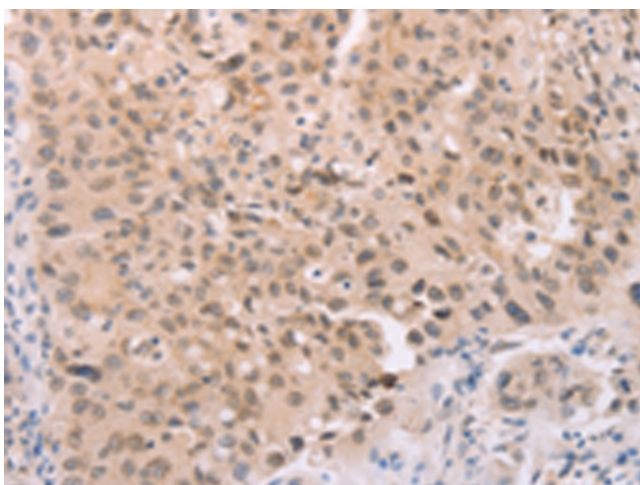
Synonyms: MDC

Protein Families: Druggable Genome, Transmembrane

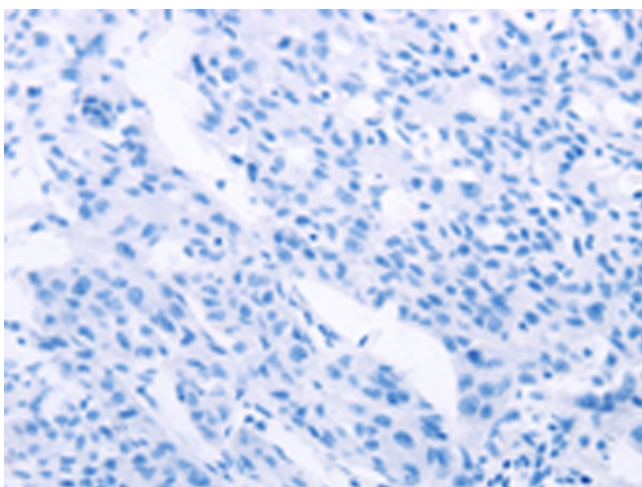
Product images:



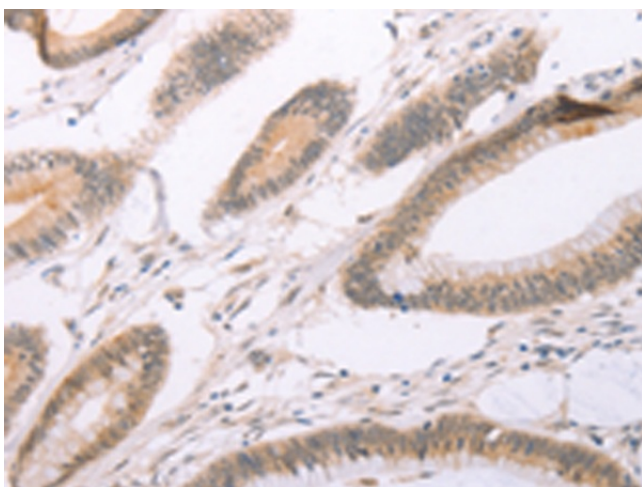
Gel: 10%SDS-PAGE
Lysate: 50 μ g
Lane: HeLa cells
Primary antibody: TA323016 (ADAM11 Antibody) at dilution 1/200
Secondary antibody: Goat anti rabbit IgG at 1/8000 dilution
Exposure time: 10 minutes



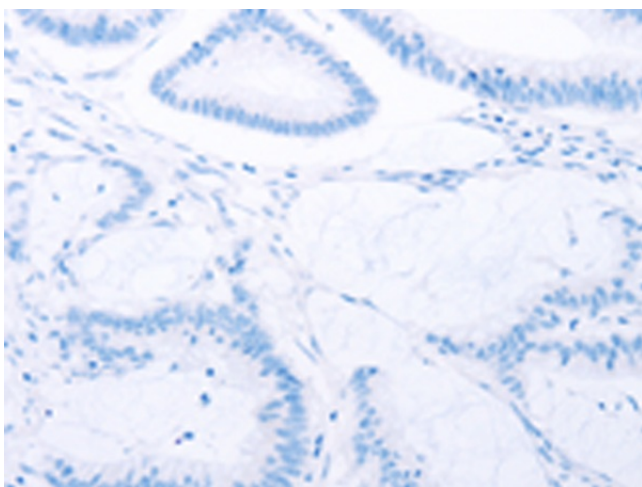
Immunohistochemistry of paraffin-embedded Human lung cancer tissue using TA323016 (ADAM11 Antibody) at dilution 1/25 (Original magnification: \times 200)



Immunohistochemistry of paraffin-embedded Human lung cancer tissue using TA323016 (ADAM11 Antibody) at dilution 1/25, treated with synthetic peptide. (Original magnification: $\times 200$)



Immunohistochemistry of paraffin-embedded Human colon cancer tissue using TA323016 (ADAM11 Antibody) at dilution 1/25 (Original magnification: $\times 200$)



Immunohistochemistry of paraffin-embedded Human colon cancer tissue using TA323016 (ADAM11 Antibody) at dilution 1/25, treated with synthetic peptide. (Original magnification: $\times 200$)