

Product datasheet for **TA323015S**

ADAM11 Rabbit Polyclonal Antibody

Product data:

Product Type:	Primary Antibodies
Applications:	IHC, WB
Recommended Dilution:	WB: 200-1000 WB positive control: Hela and SKOV3 cells IHC: 50-200 Positive control: Human breast cancer Predicted cell location: Cytoplasm
Reactivity:	Human, Mouse
Host:	Rabbit
Isotype:	IgG
Clonality:	Polyclonal
Immunogen:	Synthetic peptide corresponding to a region derived from 567-580 amino acids of human ADAM metalloproteinase domain 11
Formulation:	PBS pH7.3, 0.05% NaN ₃ , 50% glycerol
Purification:	Antigen affinity purification
Conjugation:	Unconjugated
Storage:	Store at -20°C as received.
Stability:	Stable for 12 months from date of receipt.
Predicted Protein Size:	83 kDa
Gene Name:	ADAM metalloproteinase domain 11
Database Link:	NP_002381 Entrez Gene 11488 Mouse Entrez Gene 4185 Human O75078



[View online »](#)

Background:

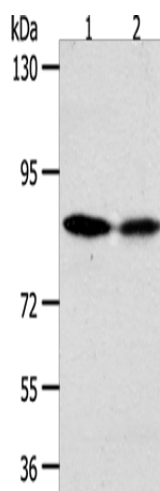
This gene encodes a member of the ADAM (a disintegrin and metalloprotease) protein family. Members of this family are membrane-anchored proteins structurally related to snake venom disintegrins; and have been implicated in a variety of biological processes involving cell-cell and cell-matrix interactions; including fertilization; muscle development; and neurogenesis. This gene represents a candidate tumor suppressor gene for human breast cancer based on its location within a minimal region of chromosome 17q21 previously defined by tumor deletion mapping.

Synonyms:

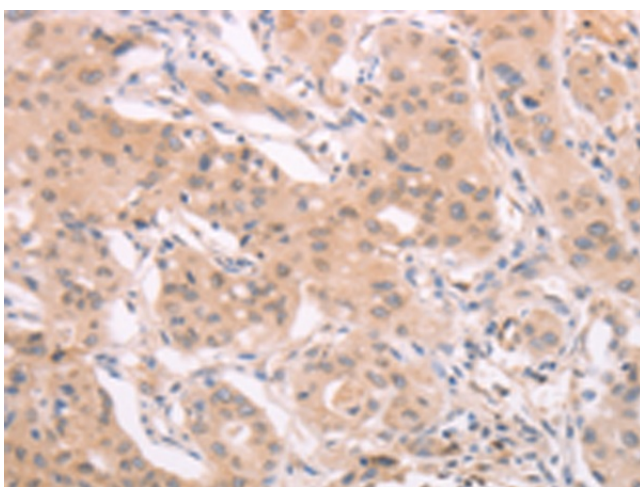
MDC

Protein Families:

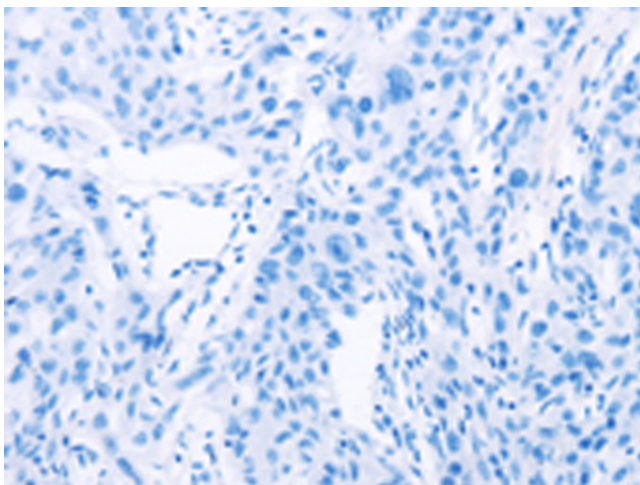
Druggable Genome, Transmembrane

Product images:

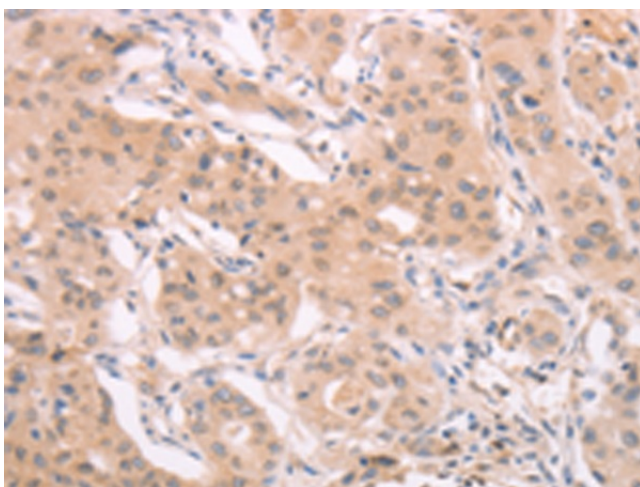
Gel: 10%SDS-PAGE
Lysate: 50 µg
Lane 1-2: HeLa cells
SKOV3 cells
Primary antibody: [TA323015] (ADAM11
Antibody) at dilution 1/500
Secondary antibody: Goat anti rabbit IgG at
1/8000 dilution
Exposure time: 10 minutes



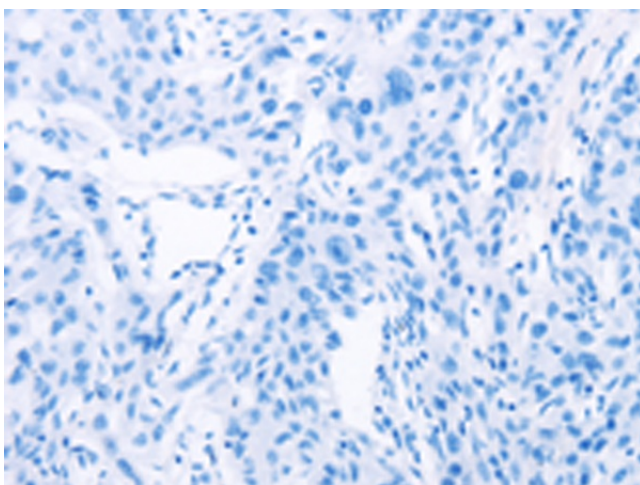
Immunohistochemistry of paraffin-embedded
Human breast cancer tissue using [TA323015]
(ADAM11 Antibody) at dilution 1/40 (Original
magnification: ×200)



Immunohistochemistry of paraffin-embedded Human breast cancer tissue using [TA323015] (ADAM11 Antibody) at dilution 1/40, treated with synthetic peptide. (Original magnification: ×200)



Immunohistochemistry of paraffin-embedded Human lung cancer tissue using [TA323015] (ADAM11 Antibody) at dilution 1/40 (Original magnification: ×200)



Immunohistochemistry of paraffin-embedded Human lung cancer tissue using [TA323015] (ADAM11 Antibody) at dilution 1/40, treated with synthetic peptide. (Original magnification: ×200)