

Product datasheet for **TA323015**

ADAM11 Rabbit Polyclonal Antibody

Product data:

| | |
|-------------------------|---|
| Product Type: | Primary Antibodies |
| Applications: | IHC, WB |
| Recommended Dilution: | WB: 200-1000 WB positive control: Hela and SKOV3 cells IHC: 50-200 Positive control: Human breast cancer Predicted cell location: Cytoplasm |
| Reactivity: | Human, Mouse |
| Host: | Rabbit |
| Isotype: | IgG |
| Clonality: | Polyclonal |
| Immunogen: | Synthetic peptide corresponding to a region derived from 567-580 amino acids of human ADAM metallopeptidase domain 11 |
| Formulation: | PBS pH7.3, 0.05% NaN ₃ , 50% glycerol |
| Concentration: | lot specific |
| Purification: | Antigen affinity purification |
| Conjugation: | Unconjugated |
| Storage: | Store at -20°C as received. |
| Stability: | Stable for 12 months from date of receipt. |
| Predicted Protein Size: | 83 kDa |
| Gene Name: | ADAM metallopeptidase domain 11 |
| Database Link: | NP_002381 Entrez Gene 11488 Mouse Entrez Gene 4185 Human O75078 |



[View online »](#)

Background:

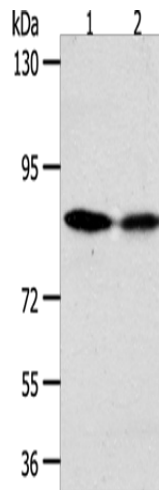
This gene encodes a member of the ADAM (a disintegrin and metalloprotease) protein family. Members of this family are membrane-anchored proteins structurally related to snake venom disintegrins; and have been implicated in a variety of biological processes involving cell-cell and cell-matrix interactions; including fertilization; muscle development; and neurogenesis. This gene represents a candidate tumor suppressor gene for human breast cancer based on its location within a minimal region of chromosome 17q21 previously defined by tumor deletion mapping.

Synonyms:

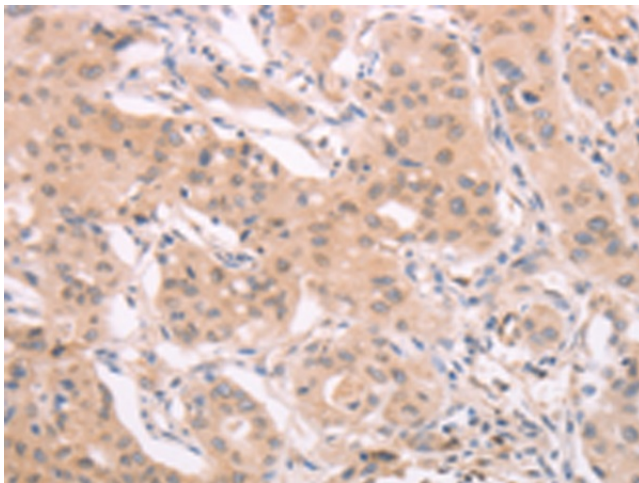
MDC

Protein Families:

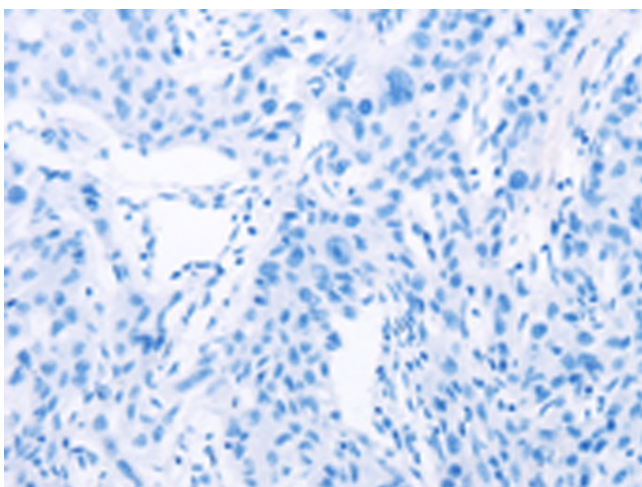
Druggable Genome, Transmembrane

Product images:

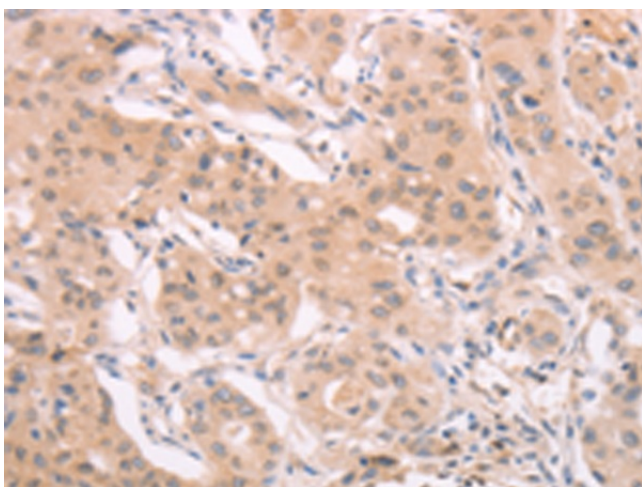
Gel: 10%SDS-PAGE
Lysate: 50 µg
Lane 1-2: HeLa cells
SKOV3 cells
Primary antibody: TA323015 (ADAM11 Antibody)
at dilution 1/500
Secondary antibody: Goat anti rabbit IgG at
1/8000 dilution
Exposure time: 10 minutes



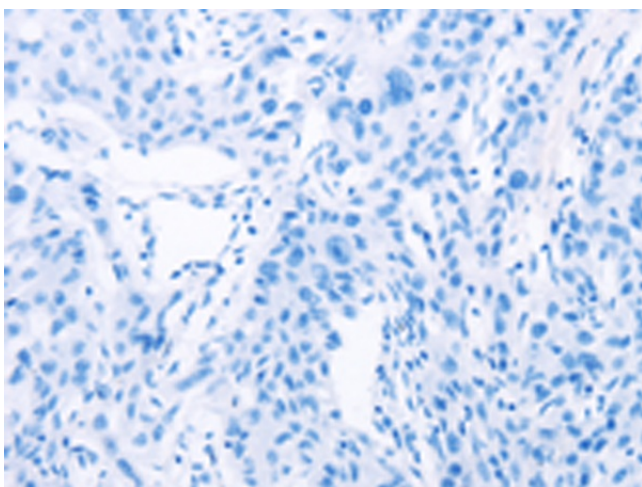
Immunohistochemistry of paraffin-embedded
Human breast cancer tissue using TA323015
(ADAM11 Antibody) at dilution 1/40 (Original
magnification: ×200)



Immunohistochemistry of paraffin-embedded Human breast cancer tissue using TA323015 (ADAM11 Antibody) at dilution 1/40, treated with synthetic peptide. (Original magnification: ×200)



Immunohistochemistry of paraffin-embedded Human lung cancer tissue using TA323015 (ADAM11 Antibody) at dilution 1/40 (Original magnification: ×200)



Immunohistochemistry of paraffin-embedded Human lung cancer tissue using TA323015 (ADAM11 Antibody) at dilution 1/40, treated with synthetic peptide. (Original magnification: ×200)