

Product datasheet for **TA323014**

MMP3 Rabbit Polyclonal Antibody

Product data:

Product Type:	Primary Antibodies
Applications:	IHC
Recommended Dilution:	IHC: 25-100 Positive control: Human breast cancer Predicted cell location: Cytoplasm
Reactivity:	Human
Host:	Rabbit
Isotype:	IgG
Clonality:	Polyclonal
Immunogen:	Fusion protein corresponding to C terminal 350 amino acids of Human Matrix metalloproteinase-3
Formulation:	PBS pH7.3, 0.05% NaN ₃ , 50% glycerol
Concentration:	lot specific
Purification:	Antigen affinity purification
Conjugation:	Unconjugated
Storage:	Store at -20°C as received.
Stability:	Stable for 12 months from date of receipt.
Gene Name:	matrix metalloproteinase 3
Database Link:	NP_002413 Entrez Gene 4314 Human P08254



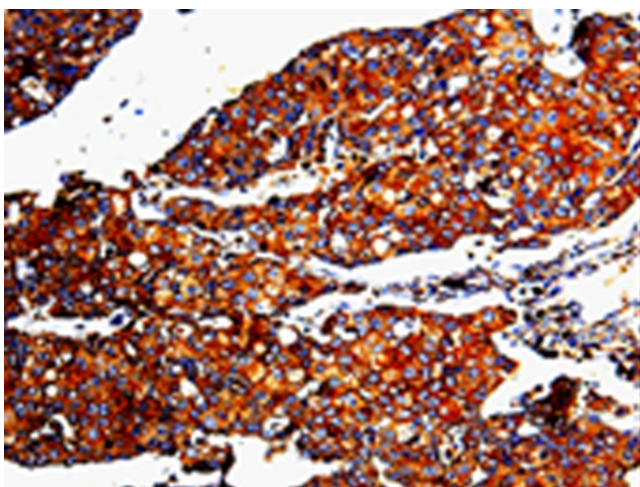
[View online »](#)

Background: Proteins of the matrix metalloproteinase (MMP) family are involved in the breakdown of extracellular matrix in normal physiological processes; such as embryonic development; reproduction; and tissue remodeling; as well as in disease processes; such as arthritis and metastasis. Most MMP's are secreted as inactive proproteins which are activated when cleaved by extracellular proteinases. This gene encodes an enzyme which degrades fibronectin; laminin; collagens III; IV; IX; and X; and cartilage proteoglycans. The enzyme is thought to be involved in wound repair; progression of atherosclerosis; and tumor initiation. The gene is part of a cluster of MMP genes which localize to chromosome 11q22.3.

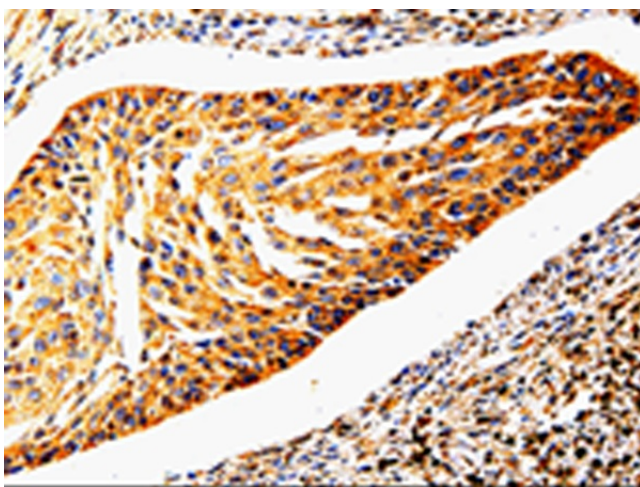
Synonyms: CHDS6; MMP-3; SL-1; STMY; STMY1; STR1

Protein Families: Druggable Genome, Protease

Product images:



Immunohistochemistry of paraffin-embedded Human breast cancer tissue using TA323014 (MMP3 Antibody) at dilution 1/10. (Original magnification: $\times 200$)



Immunohistochemistry of paraffin-embedded Human cervical cancer tissue using TA323014 (MMP3 Antibody) at dilution 1/10. (Original magnification: $\times 200$)