

Product datasheet for **TA323013**

MMP19 Rabbit Polyclonal Antibody

Product data:

Product Type:	Primary Antibodies
Applications:	IHC
Recommended Dilution:	IHC: 30-150 Positive control: Human tonsil Predicted cell location: Secreted
Reactivity:	Human
Host:	Rabbit
Isotype:	IgG
Clonality:	Polyclonal
Immunogen:	Synthetic peptide corresponding to a region derived from 494-508 amino acids of Human matrix metalloproteinase 19
Formulation:	PBS pH7.3, 0.05% NaN ₃ , 50% glycerol
Concentration:	lot specific
Purification:	Antigen affinity purification
Conjugation:	Unconjugated
Storage:	Store at -20°C as received.
Stability:	Stable for 12 months from date of receipt.
Gene Name:	matrix metalloproteinase 19
Database Link:	NP_073629 Entrez Gene 4327 Human Q99542

Background: Proteins of the matrix metalloproteinase (MMP) family are involved in the breakdown of extracellular matrix in normal physiological processes; such as embryonic development; reproduction; and tissue remodeling; as well as in disease processes; such as arthritis and metastasis. Most MMP's are secreted as inactive proproteins which are activated when cleaved by extracellular proteinases. This protein is expressed in human epidermis and it has a role in cellular proliferation as well as migration and adhesion to type I collagen. Multiple transcript variants encoding distinct isoforms have been identified for this gene.

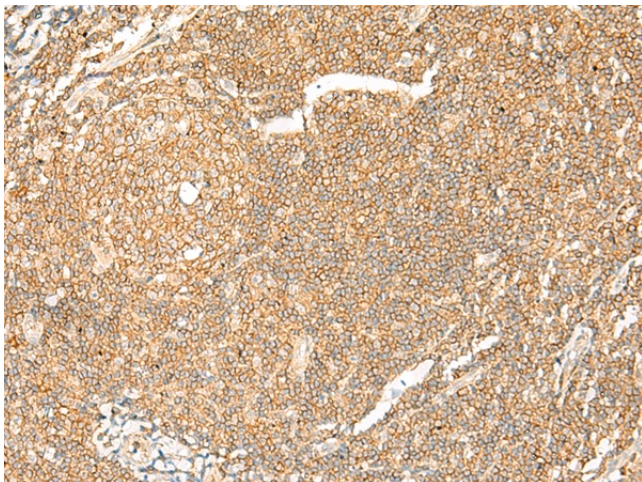


[View online »](#)

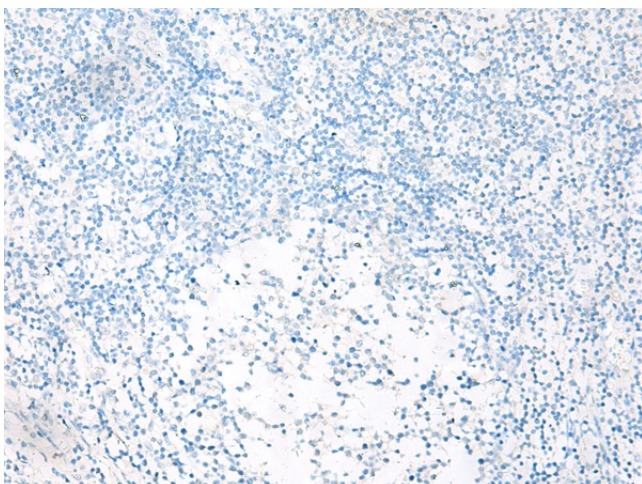
Synonyms: matrix metalloproteinase 19; matrix metalloproteinase 18; matrix metalloproteinase 19; MMP18; RASI-1

Protein Families: Protease, Secreted Protein

Product images:



Immunohistochemistry of paraffin-embedded Human tonsil tissue using TA323013 (MMP19 Antibody) at dilution 1/20 (Original magnification: ×200)



Immunohistochemistry of paraffin-embedded Human tonsil tissue using TA323013 (MMP19 Antibody) at dilution 1/20, treated with synthetic peptide. (Original magnification: ×200)