

## Product datasheet for **TA323011S**

### MSH3 Rabbit Polyclonal Antibody

#### Product data:

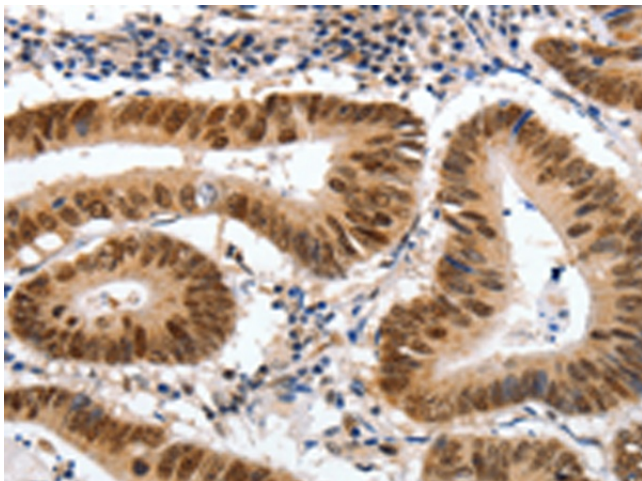
Product Type:	Primary Antibodies
Applications:	IHC
Recommended Dilution:	IHC: 25-100 Positive control: Human colon cancer Predicted cell location: Cytoplasm, Nucleus
Reactivity:	Human, Mouse
Host:	Rabbit
Isotype:	IgG
Clonality:	Polyclonal
Immunogen:	Fusion protein corresponding to a C terminal 300 amino acids of human mutS homolog 3 (E. coli)
Formulation:	PBS pH7.3, 0.05% NaN <sub>3</sub> , 50% glycerol
Purification:	Antigen affinity purification
Conjugation:	Unconjugated
Storage:	Store at -20°C as received.
Stability:	Stable for 12 months from date of receipt.
Gene Name:	mutS homolog 3
Database Link:	<a href="#">NP_002430</a> <a href="#">Entrez Gene 17686 Mouse</a> <a href="#">Entrez Gene 4437 Human</a> <a href="#">P20585</a>
Background:	The protein encoded by this gene forms a heterodimer with MSH2 to form MutS beta; part of the post-replicative DNA mismatch repair system. MutS beta initiates mismatch repair by binding to a mismatch and then forming a complex with MutL alpha heterodimer. This gene contains a polymorphic 9 bp tandem repeat sequence in the first exon. The repeat is present 6 times in the reference genome sequence and 3-7 repeats have been reported. Defects in this gene are a cause of susceptibility to endometrial cancer.
Synonyms:	DUP; FAP4; MRP1
Protein Families:	Druggable Genome, Stem cell - Pluripotency



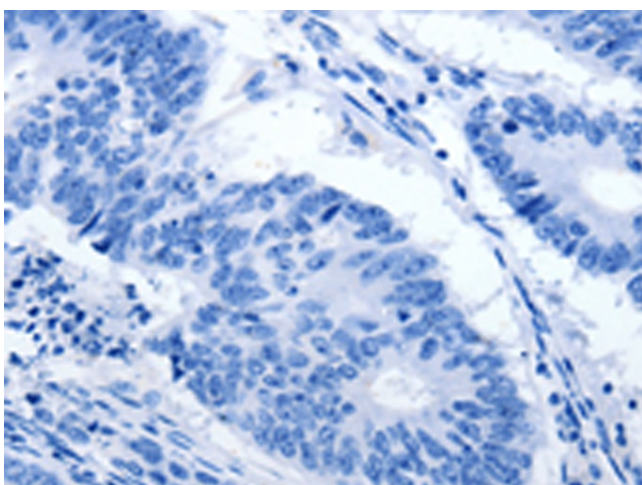
[View online »](#)

Protein Pathways: Colorectal cancer, Mismatch repair, Pathways in cancer

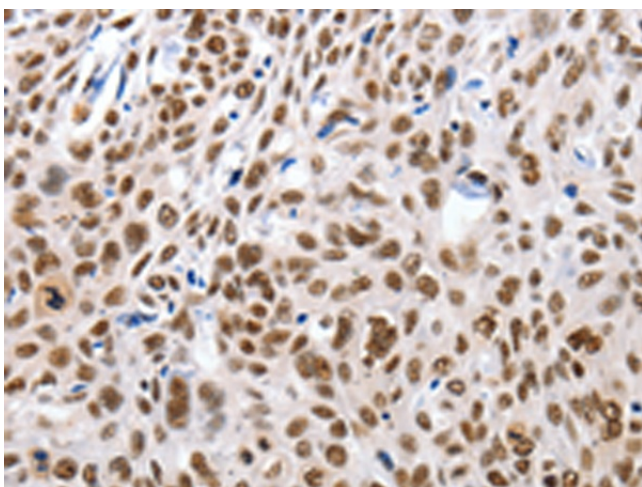
### Product images:



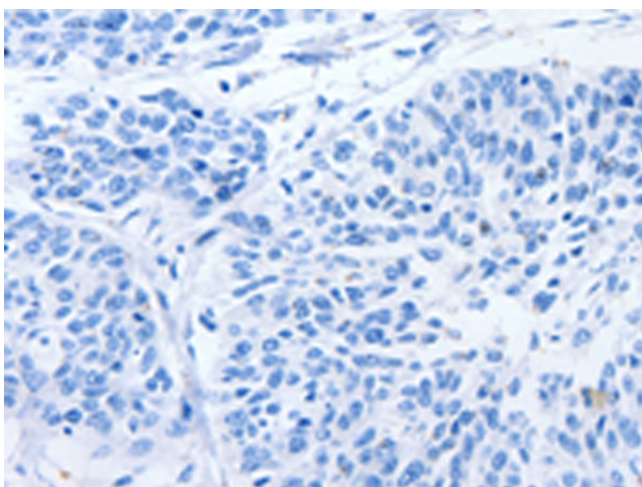
Immunohistochemistry of paraffin-embedded Human colon cancer tissue using [TA323011] (MSH3 Antibody) at dilution 1/30 (Original magnification:  $\times 200$ )



Immunohistochemistry of paraffin-embedded Human colon cancer tissue using [TA323011] (MSH3 Antibody) at dilution 1/30, treated with fusion protein. (Original magnification:  $\times 200$ )



Immunohistochemistry of paraffin-embedded Human esophagus cancer tissue using [TA323011] (MSH3 Antibody) at dilution 1/30 (Original magnification:  $\times 200$ )



Immunohistochemistry of paraffin-embedded Human esophagus cancer tissue using [TA323011] (MSH3 Antibody) at dilution 1/30, treated with fusion protein. (Original magnification:  $\times 200$ )