

## Product datasheet for **TA322996S**

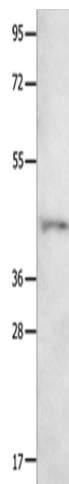
### Neurotensin Receptor 1 (NTSR1) Rabbit Polyclonal Antibody

#### Product data:

Product Type:	Primary Antibodies
Applications:	WB
Recommended Dilution:	WB: 200-1000 WB positive control: 231 cells
Reactivity:	Human
Host:	Rabbit
Isotype:	IgG
Clonality:	Polyclonal
Immunogen:	Synthetic peptide corresponding to a region derived from 402-418 amino acids of Human neurotensin receptor 1 (high affinity)
Formulation:	PBS pH7.3, 0.05% NaN <sub>3</sub> , 50% glycerol
Purification:	Antigen affinity purification
Conjugation:	Unconjugated
Storage:	Store at -20°C as received.
Stability:	Stable for 12 months from date of receipt.
Predicted Protein Size:	46 kDa
Gene Name:	neurotensin receptor 1 (high affinity)
Database Link:	<a href="#">NP_002522</a> <a href="#">Entrez Gene 4923 Human</a> <a href="#">P30989</a>
Background:	Neurotensin receptor 1 belongs to the large superfamily of G-protein coupled receptors. NTSR1 mediates the multiple functions of neurotensin; such as hypotension; hyperglycemia; hypothermia; antinociception; and regulation of intestinal motility and secretion.?
Synonyms:	NTR
Protein Families:	Druggable Genome, GPCR, Transmembrane
Protein Pathways:	Calcium signaling pathway, Neuroactive ligand-receptor interaction



[View online »](#)

**Product images:**

Gel: 10+12%SDS-PAGE  
Lysate: 40 µg  
Lane: 231 cells  
Primary antibody: [TA322996] (NTSR1 Antibody)  
at dilution 1/800  
Secondary antibody: Goat anti rabbit IgG at  
1/8000 dilution  
Exposure time: 5 minutes